



FLUIDRA



BARACUDA POOL  
EQUIPMENT

2026



## **A Reliable Brand in Pool Maintenance**

The BARACUDA® brand was established in the 1970s, and the original Baracuda pool cleaner was invented by Helmut Hofman, a South African engineer. Today, the BARACUDA® product range extends beyond automatic pool cleaners to offer complete pool care, including pool and spa chemicals, pumps, saltwater chlorinators, and manual cleaning tools and accessories. All BARACUDA® products are high-quality, affordable, and easy to install, use, and maintain, making the brand one of the most trusted names in pool care.

## BARACUDA POOL FILTERS (MADE IN EUROPE)



### BARACUDA CRYSTAL REEF SAND FILTERS

A single-piece, chemically resistant filter with flow rates of 6 m<sup>3</sup>/h-14 m<sup>3</sup>/h. Suitable for use with quartz or glass media. Supplied with a pressure gauge and Astral six-way valve.

Including bottom 1-way valve	Flow rate m <sup>3</sup> /h	Code	Unit Price Euro
CRS-T400 - Ø 400 - 1½" connection	6 m <sup>3</sup> /h	77335 FP252	177.00
CRS-T500 - Ø 500 - 1½" connection	10 m <sup>3</sup> /h	77336 FP 252	219.00
CRS-T600 - Ø 600 1½" connection	14 m <sup>3</sup> /h	77337 FP 252	237.00

### BARACUDA CRYSTAL WAVE BOBIN WINDING SAND FILTERS

The filter is supplied with a bobin winding resistant to salt water and chemicals, a transparent cover resistant to up to 2.5 Bar, a pressure gauge set, and an Astral six-way valve.



Including bottom 1-way valve	Flow rate m <sup>3</sup> /h	Code	Unit Price Euro
CWS-S400- Ø 400 - 1½" connection	6 m <sup>3</sup> /h	66238 VFP 25 2	197.00
CWS-S500 - Ø 500 - 1½" connection	10 m <sup>3</sup> /h	66239 VFP 252	240.00
CWS-S600 - Ø 600 1½" connection	14 m <sup>3</sup> /h	66240 VFP 252	281.00
CWS-S750 - Ø 750 2" connection	22 m <sup>3</sup> /h	66241 VFP 25 2	525.00
CWS-S900 - Ø 900 2" connection	32 m <sup>3</sup> /h	66242 VFP 25 2	600.00

### BARACUDA CRYSTAL STREAM LAMINATED SAND FILTERS

Made of resin and fiber, resistant to 2.5 bar, transparent cap, supplied with pressure gauge set and Astral six-way valve.



Including bottom 1-way valve	Flow rate m <sup>3</sup> /h	Code	Unit Price Euro
CSS-S-450 Ø 450 - 1½" connection	8 m <sup>3</sup> /h	64931 VFP 252	267.00
CSS-S-500 Ø 500 - 1½" connection	10 m <sup>3</sup> /h	66476 VFP 252	287.00
CSS-S-600 - Ø 600 1½" connection	14 m <sup>3</sup> /h	64932 VFP 252	377.00
CSS-S-750 - Ø 750 2" connection	22 m <sup>3</sup> /h	64933 VFP 252	527.00
CSS-S-900 - Ø 900 2" connection	32 m <sup>3</sup> /h	64934 VFP 252	587.00

# BARACUDA POOL PUMPS



## AQUANTIS MAX POOL PUMP



Manufactured according to CE Standards, it features an excellent hydraulic design created with IE2 and IE3 electric motors.

Explanation	Pump Length (cm)	Flow m <sup>3</sup> /h	Code	Net Unit Price Euro			
				Pe_in	Credit Card1	60 Days	
0.5 HP Mono	55	12.4	78155	50M	110.00	115.00	120.00
0.75 HP Mono	55	12.5	78156	75M	115.00	120.00	130.00
1HP Mono	55	16.0	78157	100M	120.00	125.00	130.00
1 HP Three-Phase	55	16.0	78158	100T	127.00	130.00	135.00
1.5 HP Mono	57	19.5	78159	150M	160.00	165.00	170.00
1.5 HP Three-Phase	57	19.5	78160	150T	160.00	165.00	170.00
2HP Mono	57	28.5	78161	200M	175.00	185.00	195.00
2 HP Three-Phase	57	28.5	78162	200T	175.00	185.00	195.00
3HP Mono	57	35.7	78163	300M	220.00	225.00	240.00
3 HP Three-Phase	57	35.7	78164	300T	210.00	215.00	225.00

# BARACUDA®

THE TRUSTED NAME IN POOL CARE

Founded in the 1970s, BARACUDA® offers complete pool care solutions trusted worldwide for quality, simplicity and ease of use for everyday pools.

## Aquantis+™

Single Speed Pump



# BARACUDA POOL EQUIPMENT (MADE IN EUROPE)



## EQUIPMENT FOR CONCRETE POOLS

### INNAQUA CONCRETE POOL SKIMMER (15 LT)

White color, made of ABS.

	Code	Net Unit Price Euro		
		Cash	Credit Card1	60 Days
STANDARD SKIMMER	00250BP252	19.50	20.00	21.00
LARGE MOUTH SKIMMER	00252BP252	31.50	32.50	33.50

### INNAQUA CONCRETE POOL VACUUM NOZZLE

White color, made of ABS.

	Code	Net Unit Price Euro		
		Cash	Credit Card1	60 Days
Multiflow 2" DN50 Side Feed A 1z1	00295BP252	1.85	1.90	1.95
Multiflow D63 PN60-D50 Beef A 1z1	00295BP252	1.87	1.92	1.97
Multiflow D50PN10 Feeder A 1z1	24413BP252	14.40	1.45	1.50

### INNAQUA CONCRETE POOL BOTTOM VACUUM NOZZLE

White color, made of ABS.

	Code	Net Unit Price Euro		
		Cash	Credit Card1	60 Days
Base Feeding -DN-50	00303BP252	3.90	3.95	4.00
Adjustable Base Feeding Unit A z1	35472BP252	3.10	3.15	3.20

### INNAQUA VACUUM GUARDS FOR CONCRETE POOLS

White color, made of ABS.

	Code	Net Unit Price Euro		
		Cash	Credit Card1	60 Days
D 50 DN10 Pipe Adhesion	24415BP252	1.30	1.35	1.40
D63 PN 16-D50 Pipe Bonding	00300BP252	1.70	1.75	1.80
2"-D50 Threaded Connection1	00301BP252	1.80	1.85	1.90

### INNAQUA CONCRETE POOL DIP DRAINS

White color, made in the USA.

	Code	Net Unit Price Euro		
		Cash	Credit Card1	60 Days
Round Bottom Strainer	01467BP252	6.60	6.65	6.70
Square bottom strainer	00258BP252	9.90	9.95	10.00



# BARACUDA POOL EQUIPMENT (MADE IN EUROPE)



## EQUIPMENT FOR LINER POOLS

### INNAQUA LINER SKIMMERS (15 Lt)

Made of ABS, white in color.

#### Net Unit Price Euro

	Code	Cash	Credit Card1	60 Days
Standard Skimmer	01462BP252	32.50	33.50	34.50
Large mouth kimmer	01468BP252	43.50	44.50	45.50



### INNAQUA LINER BES1 A TRAILS (Threaded)

White color, made of ABS.

#### Net Unit Price Euro

	Code	Cash	Credit Card1	60 Days
Multiflo 2" Besi A z1	00271BP262	14.40	14.45	14.50
2"-D50 Besi A 1z1	00330BP252	5.85	5.90	5.95



### INNAQUA LINER VACUUM TRACE

White color, made of ABS.

#### Net Unit Price Euro

	Code	Cash	Credit Card1	60 Days
2"-D50 Vacuum nozzle	00332BP252	5.85	5.90	5.95



### INNAQUA LINER POOL D1P FILTER1

White color, made of ABS.

#### Net Unit Price Euro

	Code	Cash	Credit Card1	60 Days
Round Bottom Strainer	00271BP252	14.40	14.45	14.50

# BARACUDA SALT ELECTROLYSIS DEVICE (MADE IN EUROPE)



## BARACUDA ZENQUA NEXT SALT ELECTROLYSIS DEVICE

It requires low maintenance, can operate in water temperatures of 15-40°C, and has a cell life of 10,000 hours. The gas detection system ensures efficient production adjustment. (Can be used with a pool cover.)

	Code	Unit Price Euro
7 gr/h (at 25°C water temperature)	77866	575.00
12 gr/h (at 25°C water temperature)	77867	660.00
21 gr/h (at 25°C water temperature)	77868	860.00
30 gr/h (25 C water temperature)	77869	1,140.00
40 gr/h (25 C water temperature)	77870	1,240.00



## POOL LIGHTING EQUIPMENT (MADE IN EUROPE)



### BARACUDA AQUALUME FLAT LED LIGHTS

Up to 100 times longer lifespan than traditional 300W halogen lamps. BARACUDA® AquaLume™ Flat floodlights are surface-mounted floodlights equipped with mounting hardware for easy installation.

COMPLETE LED FLAT LIGHTS	Code	Lumen	Unit Price Euro
White	77840	1485	79.00
Warm White	77841	1485	79.00
RGB	77842	1100	124.00



### BARACUDA AQUALUME MINI LED LIGHTS

BARACUDA® AquaLume™ Miniled are mini floodlights that can customize and illuminate any pool, creating the best experience. Comes with a 2.5m cable and mini bulb lighting.

Mini LED Lighting	Code	Lumen	Unit Price Euro
White	77844	315	64.00
Warm White	77845	315	64.00
RGB	77846	186	84.00



### BARACUDA AQUALUME PAR56 LED BULB

100 times longer lasting and 20 times less energy consuming than traditional halogen bulbs.

Mini LED Lighting	Code	Lumen	Unit Price Euro
White	77832	1485	49.00
Warm White	77833	1485	49.00
RGB	77834	1100	105.00

### BARACUDA AQUALUME PAR56 COMPLETE PROJECTOR WITH LED BULB

ABS floodlight complete with PAR56 LED bulbs, 12 VAC, and 2.5 m cable.

Mini LED Lighting	Code	Lumen	Unit Price Euro
White	77836	1485	84.00
Warm White	77837	1485	84.00
RGB	77838	1100	135.00



A vibrant tropical resort scene featuring a large, clear blue swimming pool in the foreground. The pool is surrounded by lush greenery, including several tall palm trees and other tropical plants. In the background, there are lounge chairs, white umbrellas, and a building with a thatched roof. The sky is bright blue with scattered white clouds. The entire image is framed by white circular and wavy graphic elements.

**FLUIDRA**

**POOL AND POND**

**ECONOMIC SOLUTIONS CATALOGUE**

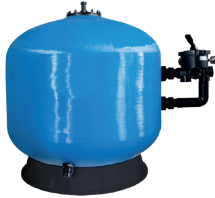
**2026**

# POOL SAND FILTERS

## BOBIN WINDING SAND FILTERS

### AQUANOVANDA POOL PRODUCTS

Yeni



Economical Aquanovanda bobin winding sand filter for private pools (Side Connection).

Made of CTP, reinforced by bobin winding method, with pressure gauge indicator.

Including bottom 1-way valve	Code	Unit Price Euro
Ø 525 - 1½" connection	<b>S525</b>	<b>310.00</b>
Ø 625 - 1½" connection	<b>S600</b>	<b>350.00</b>
Ø 750 - 2" connection	<b>S750</b>	<b>435.00</b>



Economical Aquanovanda bobin winding sand filter for public swimming pools.

Made of TP, reinforced by bobin winding method, with pressure gauge indicator.

obin sarg1 sand filter	Code	Unit Price Euro
1200 - 3" flan_ -55m3/h	<b>FPKS1200</b>	<b>1,950.00</b>
1400 -3" flan_ -76 m3/h	<b>FPKS1400</b>	<b>2,450.00</b>
1600- 4" flange - 100 m3/h	<b>FPKS1600</b>	<b>3,770.00</b>
1800 - 6" flange - 120 m³/h	<b>FPKS1800</b>	<b>6,000.00</b>
2000- 7" flan_ - 145 m3/h	<b>FPKS2000</b>	<b>8,000.00</b>

### AQUARAMBLA

Economical Aquarambla bobin winding sand filter for private pools (Side Connection)

Made of CTP, reinforced by bobin winding method, with pressure gauge indicator.

Including bottom 1-way valve	Code	Unit Price Euro
Ø 525 - 1½" connection	<b>CNC-S525</b>	<b>440.00</b>
Ø 750 - 2" connection	<b>CNC-S750</b>	<b>715.00</b>
Ø 900 - 2" connection	<b>CNC-S900</b>	<b>865.00</b>



2" Bottom 1-way valve included	Code	Unit Price Euro
Ø 1000	<b>FPKS1000</b>	<b>990.00</b>
Ø 1200	<b>FPKS1200</b>	<b>1,190.00</b>
Ø 1400	<b>FPKS1400</b>	<b>1,750.00</b>

# POOL SAND FILTERS

## POLYESTER SAND FILTERS

### Economic Aquarambla Laminated Polyester sand filters



Red in color, made of GRP, with side mounted connection, black cover, and pressure gauge. AstralPool includes multi-way valve.

Including bottom 1-way valve	Code	Unit Price Euro
Ø 500 - 1½" connection	AQ500	320.00
Ø 620 - 1½" connection	AQ650	390.00
Ø 760 - 2" connection	AQ750	495.00
Ø 800 - 2" connection	AQ800	545.00
Ø 920 - 2" connection	AQ950	645.00

### Economical for public swimming pools Aquarambla Laminated Polyester sand filters



Red in color, made of GRP (Glass Reinforced polyester), with sidemounted connection and pressure gauge. Except for the multiport valve

Except for the lower 1-way valve	Code	Unit Price Euro
Ø 1050 - Ø 75 connection1	AQ1050	850.00
Ø 1250 - Ø 90 connection1	AQ1250	1,050.00
Ø 1400 - Ø 110 connection1	AQ1400	1,600.00
Ø 1600 - Ø 125 connection	AQ1600	2,000.00
Ø 2000 - Ø 160 connection1	AQ2000	3,150.00

### Norm model Aquarambla Laminated Polyester sand filters

Deep-bed sand filter made of CTP, with pressure gauge, pressure bleeder, and lateral diffuser.



Sand bed height 1m

Norm Polyester Sand Filters	CODE	Unit Price Euro
<b>Includes multi-way valve.</b>		
Ø 620 - 1½"	AQ620-DIN	1,000.00
Ø 800 - 2"	AQ800-DIN	1,500.00
Ø 920 - 2"	AQ920-DIN	1,600.00
<b>Except for the multi-way valve</b>	<b>CODE</b>	
Ø 1050 - Ø 75 connection1	AQ1050DIN	2,000.00
Ø 1250 - Ø 90 connection1	AQ1250-DIN	2,500.00
Ø 1400 - Ø 110 connection1	AQ1400-DIN	3,000.00
Ø 1600 - Ø 125 connection	AQ1600-DIN	3,500.00

# POOL SAND FILTERS

## POLYESTER SAND FILTERS



### "Omar Laminated Polyester" sand filter

The body is white and made of polyester and fiberglass. AstralPool side multi-way valve1, Pressure gauge and transparent filter lid. Maximum operating pressure 2.5 kg/cm<sup>2</sup>.

Multi-way valve included.	Flow	Code	Unit Price Euro
Ø 750 - 2" connection	22 m <sup>3</sup> /h	64933	970.00
Ø 900 - 2" connection	32 m <sup>3</sup> /h	64934	1,150.00

## PLASTIC SAND FILTERS

### Economical "Aquarambla Plastic Injection" sand filters.

Made of plastic, in yellow color, with pressure gauge and AstralPool six-way valve included.

Including bottom 1-way valve	Code	Unit Price Euro
Ø 400 - 1½" connection	PQ400	245.00
Ø 500 - 1½" connection	PQ500	265.00
Ø 600 - 1½" connection	PQ600	285.00
Ø 760 - 2" connection	PQ760	405.00



1nce



Middle



Thick

### Quartz Sand Media

Quartz Sand	Code	Unit Price Euro / kg
Economical quartz sand (fine)	00596-Y	0.38
Economical quartz sand (medium)	10697-Y	0.38
Economical quartz sand (coarse)	11346-Y	0.38

Note: Please inquire about our special prices for truckload (21 ton) orders.

### Aquarambla Glass Sand Media

It comes in 25 kg packages.

Glass Sand	Code	Unit Price Euro / kg
0.6 - 1.2 mm	57011-Y	0.50
1.7 - 2.4 mm	57012-Y	0.50
4.0 - 6.0 mm	57013-Y	0.50

# POOL CIRCULATION PUMPS

## PUMPS

### DXD pump (imported)

Self-priming pool circulation pump with pre-filter. Flow rate between 10 m<sup>3</sup>/h and 40 m<sup>3</sup>/h. Includes connection parts. Ideal all types of pool. Maximum operating temperature: 35°C.



1 - 2 - 3 hp

	Suction - Print	Hmax (mss)	Qmax (m <sup>3</sup> /h)	Code	Unit Price Euro
0.4HP mono	Ø50	7	10	DXD-310TM-350	240.00
0.75 HP mono	Ø50	8	15	DXD-310TM-550W	250.00
1 HP mono	Ø50	10	18	DXD-310EM	270.00
1.5 HP mono	Ø50	12	20	DXD-315EM	310.00
2 HP mono	Ø63	12	37	DXD-320EM	355.00
3 HP tri	Ø63	13	40	DXD-330ZM-3P	430.00
3HP mono	Ø63	13	40	DXD-330ZM	435.00

### Bering pump (imported)

Self-priming pump with pre-filter. Flow rate up to 39 m<sup>3</sup>/h. Includes connection fittings. Ideal for above-ground pools. 2" - Ø63 connection (suction - discharge). Maximum operating temperature: 35°C.



3 hp



3.5 hp

SINGLE-PHASE	Code	Unit Price Euro
3 HP Qmax 35.1 m <sup>3</sup> /h	66702	460.00
3.5 HP Qmax 39 m <sup>3</sup> /h	66703	500.00

### Pool pump stand



Pump Stand1	Code	Unit Price Euro
41 x 25 x 20 cm (Length x Width x Height)	25461-P	13.00

## POOL SURROUNDINGS1 PRODUCTS1

### POOL MACHINE ROOMS AND ACCESSORIES

#### Polyester Machine Room Cover 1

Made of fiberglass reinforced polyester (3+3+3 cm edge banding)

On concrete	Code	Unit Price Euro
70 x 70 cm	31105R0005-E	300.00
90 x 90 cm	31105R0006-E	390.00
100 x 100 cm	31105R0003-E	410.00



#### Machine Room Ladder made of CTP

Made from glass fiber reinforced polyester.

Engine Room Staircase	Code	Unit Price Euro
3 Steps (130 cm)	PMDM3	200.00
4 Steps (160 cm)	PMDM4	220.00
5 Steps (190 cm)	PMDM5	235.00



#### Polyester Foot Washing Pool

Blue, fiberglass reinforced polyester, 10cm deep.

Polyester Foot Washing Pool	Code	Unit Price Euro
60 x 45	FLD302	110.00
135 x 50	FLD300	225.00



### ECONOMIC SOLAR WALLS

#### Lorie Solar Shower

The Loire solar shower features a smart and modern style combined with a simple design featuring rounded lines. It is available in different colours to suit the ambiance of your garden. Enjoy a relaxing experience before and after each pool session thanks to its 25-liter tank that provides hot water without using electricity.

TECHNICAL SPECIFICATIONS:

- " Polyethylene structure 1.
- " Water spray effect and anti-limescale tap.
- " Hot and cold water adjustment tap.
- " Drainage system
- " Optional hose connection

Lorie Solar Shower	Code	Unit Price Euro
Black	74809	580.00
Sand color	74810	580.00
Olive Green	74811	580.00
Burgundy	74812	580.00

NOTE: Must be operated with a pressure regulator. Pressure regulator is sold separately.

#### Pressure Regulator for Du\_lar

Pressure Regulator	Code	Unit Price Euro
Pressure reducer with pressure gauge 1/2"	BDB-01	55.00



# BESGO MULTI-WAY VALVES



## BESGO MULTI-WAY VALVES

### Besgo 5-Way Valve

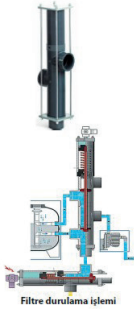
Besgo 5-way valve	Length (mm)	Code	Unit Price Euro
Ø50 Connection 111 20 m <sup>3</sup> /h	125	AS083103	923.00
Ø63 Connection 111 30 m <sup>3</sup> /h	230	AS083203	1,008.00
Ø75 Connection 1/45 m <sup>3</sup> /h	270	AS083302	1,325.00
Ø90 Connection 111 65 m <sup>3</sup> /h	300	AS083401	2,015.00
Ø110 Connection 111 95 m <sup>3</sup> /h	400	AS083502	2,915.00

### Besgo 3-Way Valve

You can save energy and costs with the Besgo 3-way valve. It is used in the filter rinsing process.

"In swimming pools with overflow channels where a pool cover is used, filtration compatible with the cover is required."

"The same filtration system can be used in two different pools or jacuzzis (with two 3-way valves). Two different water attractions can be created with one pump."



Fitre durulama işlemi

Besgo 3-way valve	Code	Unit Price Euro
Ø50 Connection 111 26 m <sup>3</sup> /h	AS083130	765.00
Ø63 Connection 111 37 m <sup>3</sup> /h	AS083230	845.00
Ø75 Connection 1/61 m <sup>3</sup> /h	AS083330	1,115.00
Ø90 Connection 111 85 m <sup>3</sup> /h	AS083430	1,675.00
Ø110 Ba lant111 119 m <sup>3</sup> /h	AS083530	2,590.00
DØ140 Ba lant111 175 m <sup>3</sup> /h	AS083630	4,490.00

### Besgo Valve Connection Kits

Besgo connection accessories and kits for multi-way valves.

Besgo valve connection kits	Code	Unit Price Euro
1 Besgo water pressure fitting kit for valve, 3/8" pressure gauge 0-10bar, check valve, filter, valve.	AS083710-E	170.00
1 Compressor for Besgo valve, 230V, tank capacity 3 L, 3.5 - 4.5 bar, low noise level (40 dB)	AS083719-E	360.00
1 Besgo compressor connection kit for 1 valve 1/4": 1 valve, 2 fittings, 10m PE 6/4mm hose.	AS083701-E	48.00
Besgo 24V AC solenoid valve set - complete DN40/50/65for valves	AS083017	205.00

\* Besgo multi-way valves' filters and system connection adapters are sold separately.

# POOL STAIRS

## ECONOMIC STAINLESS STEEL POOL STAIRS

### Super Eco Plastic Steps "STANDARD" Ladder

It is manufactured from Ø42mm stainless steel pipe with a thickness of 1.2mm.

Plastic Steps	Code	Unit Price Euro
3-steps AISI-304	SLP315-304	160.00
4-s AISI-304	SLP415-304	180.00



### Super Eco Stainless Steel Steps "STANDARD" Ladder

It is manufactured from Ø42mm stainless steel pipe with a thickness of 1.2mm.

Stainless Steel Steps	Code	Unit Price Euro
3-steps AISI-304	SLP315-304	180.00
4-steps AISI-304	SLP415-304	200.00
3-steps AISI-316	SL315-316	220.00
4-steps AISI-316	SL415-316	260.00



### Super Eco Stainless Steel Steps "MURO" Ladder

It is manufactured from Ø42mm stainless steel pipe with a thickness of 1.2mm.

Stainless Steel Steps	Code	Unit Price Euro
5-steps AISI-304	MC515-304	210.00
2-steps AISI-316	MCP215-316	215.00

### IML "STANDARD" ladder

AISI-316	Standard Step 1	Unit Price Euro	Luxury Step 1	Unit Price in Euros
	Code		Code	
3-steps AISI-316	PS-0152	244.00	PS-0152L	275.00

### IML "MIXTO" ladder

AISI-304 stainless steel stairs.

AISI-304	STANDARD STEPPED	Unit Price Euro	LUXE STEPPED	Unit Price Euro
	Code		Code	
3 steps	PS-0302	230.00	PS-306	255.00
4 steps	PS-0303	285.00	PS-307	285.00



# POOL STAIRS

## ECONOMIC STAINLESS STEEL POOL STAIRS



### Super Eco 1000 (Wide) Model Pool Ladder

Stainless Steel Steps	Code	Unit Price Euro
3-steps AISI-304	<b>08921-304</b>	<b>300.00</b>
4-steps AISI-304	<b>08922-304</b>	<b>310.00</b>



### Economical "STANDARD" ladder

AISI-304 stainless steel stairs.

Stainless Steel Steps	Code	Unit Price Euro
4 steps	<b>M00155</b>	<b>270.00</b>
5 steps	<b>M00156</b>	<b>400.00</b>



### Economical "MURO" ladder

AISI-304 stainless steel stairs.

Stainless Steel Steps	Code	Unit Price Euro
5 steps	<b>M00160</b>	<b>350.00</b>

## AQUANOVANDA POOL PRODUCTS



### Aquanovanda Stainless Steel Step Ladder

It is manufactured from Ø42mm stainless steel pipe with a thickness of 1mm.

STANDARD Model Stainless Steel Steps	Code	Unit Price Euro
3-steps AISI-304	<b>SNV315-304</b>	<b>120.00</b>
4-steps AISI-304	<b>SNV415-304</b>	<b>130.00</b>

MURO Model Stainless Steel Steps	Code	Unit Price Euro
3-steps AISI-304	<b>MNV315-304</b>	<b>120.00</b>
4-steps AISI-304	<b>MNV415-304</b>	<b>130.00</b>

# POOL OUTSIDE EQUIPMENT

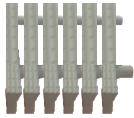
## ECONOMIC OVERFLOW GRATES



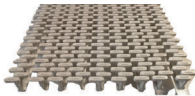
Eco-Wave Pattern Profile Pool Grate h=2 cm		
WAVE PATTERN	Code	Unit Price Euro
Single interlocking - 20 cm	11107-E	9.80
Single interlocking - 25 cm	11108-E	13.50
Double interlocking pair - 20 cm	11109-E	12.00
Double interlocking pair - 25 cm	11110-E	14.40



Eco Classic Pattern I Profile Pool Grate h=2.5 cm		
CLASSIC DESIGN   PROFILE	Code	Unit Price Euro
Single interlocking - 20 cm	11107-N	9.20
Single interlocking - 25 cm	11108-N	13.50
Double interlocking pair - 20 cm	11109-N	12.00
Double interlocking pair - 25 cm	11110-N	14.40



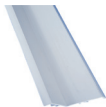
Eco Classic Pattern T Profile Pool Grate h=2.5 cm		
CLASSIC DESIGN T PROFILE	Code	Unit Price Euro
Single interlocking - 20 cm	11107-T	10.50
Single interlocking - 25 cm	11108-T	14.00
Double interlocking pair - 20 cm	11109-T	12.50
Double interlocking pair - 25 cm	11110-T	15.50



Eco Serrated Pattern Pool Grate h=2.5 cm		
SERRATED PATTERN	Code	Unit Price Euro
Single interlocking - 25 cm	11115-T	15.75

### Economical 1-grid support profile

It is made of PVC.



Grill Support Pro li	Code	Unit Price Euro
PVC profile	00224Y	1.90

\* Products are priced per meter.

\*\* If you want it in color, there will be a 20% price difference.

# POOL OUTSIDE EQUIPMENT

## ECONOMIC GRILL PARTS

### Economical Grilled Corner Pieces

Made from PP. h=2.5 cm.



450 pieces	Code	Unit Price Euro
Grating width 195 mm	22387-Y	5.50
Grating width 245 mm	22388-Y	7.00
Grating width 300 mm	22390-Y	8.50



900 pieces	Code	Unit Price Euro
Grating width 195 mm	22379-Y	5.50
Grating width 245 mm	22380-N	7.00
Grating width 300 mm	22381-N	8.50

## SUN\_LOUNDERING\_LOUNDERS



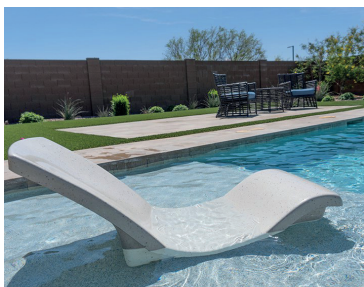
The Destination Series Rocking Lounger is an elegantly designed and sturdy pool lounger that offers a gentle rocking feature to make it easier to get up from the lounger while in the pool.

It is a composite product manufactured using a UV-resistant, high-performance Resin Transfer Molding (RTM) system, resulting in a lightweight yet strong structure.

Thanks to its innovative design, it easily drains the water when removed from the pool when not in use.



	Code	Unit Price Euro
Destination Rocking sun lounger - Tan	DS-2-51	1,450.00
Destination Rocking chaise lounge - Gray	DS-2-52	1,450.00
Destination Rocking lounger - Starry Night	DS-2-60	1,650.00
Destination Rocking_lounge - SeaShell	DS-2-61	1,650.00



# POOL OUTSIDE EQUIPMENT

## ECONOMIC COBRA AND COBRA WATERFALLS

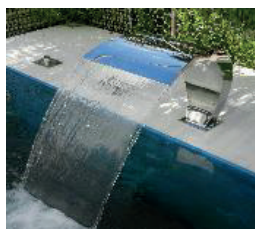


### Super Economical Mini Cobra Waterfalls

AISI-316 stainless steel	Flow	Code	Unit Price Euro
300 x 300 mm (W x H)	7 m <sup>3</sup> /h	CC-3030-316	525.00

### Economic Cobra Waterfalls

It is manufactured from 1.5 mm thick stainless steel.



AISI-304 stainless steel	Flow	Code	Unit Price Euro
400 x 500 mm (W x H)	11 m <sup>3</sup> /h	FLDP4050	330.00
500 x 600 mm (W x H)	16 m <sup>3</sup> /h	FLDP5060	440.00
400 x 800 mm (W x H)	15 m <sup>3</sup> /h	FLDP4080	500.00

AISI-316 stainless steel	Flow	Code	Unit Price Euro
400 x 500 mm (W x H)	11 m <sup>3</sup> /h	FLDP4050S	410.00
500 x 600 mm (W x H)	16 m <sup>3</sup> /h	FLDP5060S	535.00
400 x 800 mm (W x H)	15 m <sup>3</sup> /h	FLDP4080S	615.00

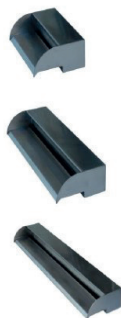
## ECONOMIC STAINLESS STEEL WATERFALLS



### Economical Arched Waterfall

It is manufactured from 1.5 mm thick stainless steel.

AISI-304 stainless steel	Code	Unit Price Euro
300 x 650 mm (W x H)	FP650	200.00
500 x 600 mm (W x H)	FB600	240.00



### Super Economical Stainless Steel Wall Waterfalls

AISI-304 stainless steel	Flow	Code	Unit Price Euro
Length L=1200 mm	11 m <sup>3</sup> /h	WFS-1200 (SS304)	350.00

AISI-316 stainless steel	Flow	Code	Unit Price Euro
Length L=300 mm	5 m <sup>3</sup> /h	WFS-300 (SS316)	255.00
Length L=1200 mm	11 m <sup>3</sup> /h	WFS-1200 (SS316)	525.00

# POOL OUTSIDE EQUIPMENT



## POOL ACRYLIC SOLUTIONS<sup>1</sup>

### SECURITY

Acrylic is approximately 16 times stronger and 50% lighter than glass products. Its impact resistance is also much higher than that of glass products.

### THERMAL DEVELOPMENT

Acrylic offers 20% greater resistance to heat loss and condensation on its surface compared to glass products.

### BRIGHTNESS

Acrylic panels used underwater offer 10% better visibility than glass products.

### DIZAYN

Acrylic panels are more functional and versatile than factory-made glass products. They have unlimited design and size potential. Each different design is produced using heat treatment and joining techniques appropriate to its geometric form.

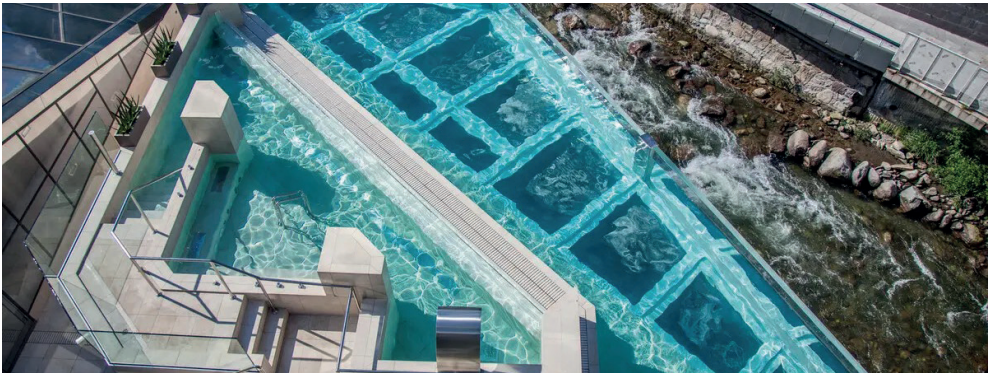
### LONG-LASTING

Acrylic panels are guaranteed against yellowing for a minimum of 10 and a maximum of 30 years against pool chemicals and weather conditions. With their high UV resistance and durability, they are resistant to all weather conditions in all four seasons (DIN5036).

### BRIGHTNESS

Acrylic panels used underwater offer 10% better visibility than glass products.

**Please request a quote for customized solutions for your projects.**



# POOL OUTSIDE EQUIPMENT

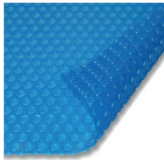
## POOL COVERS (MANUAL)

An outdoor swimming pool loses 70% of its heat through evaporation. This loss alone represents a cost. Evaporation is an energy-consuming process that lowers the pool's temperature.

Simply covering your pool can prevent 98% of evaporation losses, insulate the pool, and protect it from environmental pollutants. Covering the pool will conserve water, maintain the pool temperature, and reduce chemical consumption.

These covers not only save you energy and resources, but are also recyclable.

### Aquarambla Bubble Floating Thermal Pool Cover (600 microns)



"600 micron thickness"  
UV protection  
Bubble diameter 12-16 mm

Thermal bubble pool cover 600 microns - blue	Code	Unit Price Euro
4 x 8 meter blue thermal pool cover	FDRB4X8	660.00
4 x 10 meter blue thermal pool cover	FDRB4X10	840.00
5 x 10 meter blue thermal pool cover	FDRB5X10	1,040.00
5 x 12 meter blue thermal pool cover	FDRB5X12	1,260.00
6 x 10 meter blue thermal pool cover	FDRB6X10	1,260.00
6 x 12 meter blue thermal pool cover	FDRB6X12	1,430.00

\* Please request a quote for other dimensions.



# POOL OUTSIDE EQUIPMENT

## AUTOMATIC POOL COVERS

Thanks to highly functional and safe automatic pool covers, you can save up to 80% on energy costs because there is no need to constantly heat the water. They also help reduce humidity in indoor swimming pools.

Our automatic pool covers, tailored to your expectations and the specifications of your swimming pool, are lightweight and durable, made with high-quality PVC slats, and manufactured to the highest standards with reliable designs.

### Aquarambla Automatic Pool Cover

	Code	Price Euro
4 x 8 meter automatic pool cover	FOPC4X8	6,800.00
4 x 10 meter automatic pool cover	FOPC4X10	7,450.00
5 x 10 meter automatic pool cover	FOPC5X10	8,450.00
5 x 12 meter automatic pool cover	FOPC5X12	9,400.00
6 x 10 meter automatic pool cover	FOPC6X10	10,850.00
6 x 12 meter automatic pool cover	FOPC6X12	11,750.00

\* Please request a quote for other dimensions.



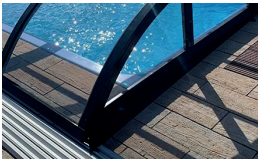
# POOL OUTSIDE EQUIPMENT

## POOL COVERING SYSTEMS

### Horizon Pool Enclosure System



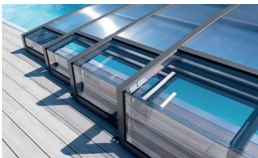
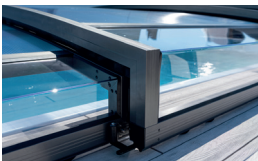
Module Say1st	Length (1 measure)	Width (1 measure)	Height	Code	Unit Price Euro
4	729 cm	486 cm	100 cm	HOR729	14,680.00
5	910 cm	472 cm	103 cm	HOR910	17,560.00
6	1091 cm	458 cm	108 cm	HOR1091	20,700.00
6	1289 cm	514 cm	116 cm	HOR1289	22,400.00



### Cosmos Pool Enclosure System



Module Say1st	Length (1 measure)	Width (1 measure)	Height	Code	Unit Price Euro
4	729 cm	410 cm	77 cm	COS729	21,100.00
5	910 cm	388 cm	87 cm	COS910	25,550.00
6	1091 cm	366 cm	97 cm	COS1091	29,900.00
5	1040 cm	388 cm	87 cm	COS1040	26,600.00
6	1247 cm	366 cm	97 cm	COS1247	31,200.00



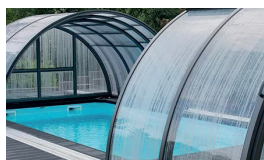
# POOL OUTSIDE EQUIPMENT

## POOL COVERING SYSTEMS

### Orbit Up Pool Enclosure System



Module Say1s1	Length (1 measure)	Width (1 measure)	Height	Code	Unit Price Euro
4	729 cm	486 cm	220 cm	ORBU729	16,900.00
5	910 cm	472 cm	220 cm	ORBU910	20,100.00
6	1091 cm	458 cm	220 cm	ORBU1091	23,400.00
5	1075 cm	570 cm	220 cm	ORBU1075	21,900.00
6	1289 cm	556 cm	220 cm	ORBU1289	25,500.00



### Copula Pool Enclosure System



Module Say1s1	Diameter	Height	Code	Unit Price Euro
2	400 cm	220 cm	COP400	14,000.00
2	450 cm	220 cm	COP450	14,700.00
2	500 cm	220 cm	COP500	16,150.00



# POOL EQUIPMENT

## ECONOMIC ABS POOL NOZZLES

Economical ABS nozzles for reinforced concrete pools.



Pool side feed nozzle	Code	Unit Price Euro
Construction type, Ø50	00298-NN	3.00
Construction type, Ø63	00298-N	3.00



Pool vacuum nozzle	Code	Unit Price Euro
Construction type, Ø50	00300-YY	3.00
Construction type, Ø63	00300-N	3.00



Pool bottom feed nozzle	Code	Unit Price Euro
Construction type, Ø50, flow adjustable	35419-YY	3.00
Construction type, Ø63, flow adjustable	35419-N	3.00

Economical ABS nozzles for liner pools.



Side Feeding nozzle

Vacuum nozzle

	Code	Unit Price Euro
Ø63 side feed nozzle mounting type	00330-Y	13.00
Ø63 vacuum nozzle mounting type	00332-Y	13.00
Ø63 side feed nozzle, threaded type.		13.00

## ECONOMIC POOL NOZZLES WITH STAINLESS STEEL COVERS

Economical stainless steel nozzles for reinforced concrete pools1

The body is made of ABS, and the front end is made of AISI-316 stainless steel. Includes frame.



CONSTRUCTION TYPE	Code	Unit Price Euro
Side feed nozzle Ø63	16325-Y	48.00
Vacuum nozzle Ø63	00317-Y	48.00
Bottom feed nozzle Ø63	15839-Y	48.00

Economical stainless steel nozzles for liner pools1

The body is made of ABS, and the front end is made of AISI-316 stainless steel. Includes frame.



CONSTRUCTION TYPE	Code	Unit Price Euro
Side feed nozzle Ø63	16325-L	60.00
Vacuum nozzle Ø63	00317-L	60.00

# POOL EQUIPMENT

## ECONOMIC ABS BOTTOM GRILLES

Economical ABS bottom grates for reinforced concrete pools.

Made of ABS.



Round type	Code	Unit Price Euro
Ø 24.5 cm	00280-N	8.00



Square type	Code	Unit Price Euro
20 x 20 cm	34330-Y	11.00
26.5 x 26.5 cm	34331-Y	14.00
30 x 30 cm	34331-Y30	18.00
41 x 41 cm	34331-Y41	80.00

Economical ABS bottom strainer for swimming pools.

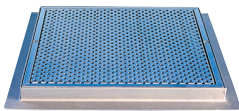
Made of ABS, the liner model is shipped with the gaskets.



Bottom Strainer	Code	Unit Price Euro
2" connection for Liner Pools	00271-Y	18.00
2" connection for Reinforced Concrete Pools	00272-Y	15.00

## STAINLESS STEEL ECONOMICAL BOTTOM GRIDS

Stainless steel bottom grates for reinforced concrete pools.



Square Bottom suction grille AISI-304	Code	Unit Price Euro
300 x 300 mm bottom strainer	F00285-Y	100.00
400 x 400 mm bottom strainer	F00286-Y	200.00
600 x 600 mm bottom strainer	F00288-Y	300.00

Square Bottom suction grille AISI-316	Code	Unit Price Euro
300 x 300 mm bottom strainer	F30765-Y	125.00
400 x 400 mm bottom strainer	F30766-Y	250.00
600 x 600 mm bottom strainer	F30769-Y	475.00

# POOL EQUIPMENT



## ATTACHMENT FILTRATION SET

### D1\_tan Mounting Filtration Set

The d1\_ housing, made of polyester, consists of a double skimmer a z1, a feed nozzle, a double cartridge filter, and a pump.



Filtration Set	Code	Unit Price Euro
<b>FB12</b> For 45m <sup>3</sup> pools, 12 m <sup>3</sup> /h flow rate, 0.5 kW pump.	<b>66889</b>	<b>3,100.00</b>
<b>FB12</b> For 45m <sup>3</sup> pools, 12 m <sup>3</sup> /h flow rate + 0.5 kW pump. + LED lighting	<b>66890</b>	<b>3,800.00</b>

## SUPER ECONOMIC ABS SKIMMERS

### Super Economical Mini Skimmer (For All Pools)

This is a mini skimmer made of ABS with a liner-type seal. One wall-mounted feed nozzle is included.



Skimmer

Nozzle

Liner Tip	Code	Unit Price Euro
Mini Skimmer (1 unit included with feeder A Z1)	<b>A9001BX</b>	<b>54.00</b>

### Super Economical Geni\_ A 1z1 Skimmer (For All Pools)

This is a mini skimmer made of ABS with a liner-type seal. One wall-mounted feed nozzle is included.



Skimmer

Nozzle

Liner Tip	Code	Unit Price Euro
Geni_ A 1z1 Skimmer	<b>A9002BX</b>	<b>63.00</b>

# POOL LININGS

## LINER COATINGS

### Mosaic Pattern Liner

1.5 mm thick, measuring 25 m x 1.65 m.

	Code	NET UNIT PRICE EURO		
		Pe_in	Credit Card1	60 Days
Mosaic pattern	EXT-768	11.80	12.20	13.20

### Dark Blue Liner

1.5 mm thick, measuring 25 m x 1.65 m.

	Code	NET UNIT PRICE EURO		
		Pe_in	Credit Card1	60 Days
Dark blue	5925	11.80	12.20	13.20

### Light Blue Liner

1.2 mm thick, measuring 25 m x 1.65 m.

	Code	NET UNIT PRICE EURO		
		Pe_in	Credit Card1	60 Days
Light blue	8006	11.80	12.20	13.20

### Dark Blue Mosaic Pattern Liner

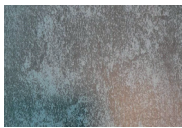
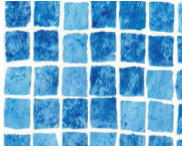
1.5 mm thick, measuring 25 m x 1.65 m.

	Code	NET UNIT PRICE EURO		
		Pe_in	Credit Card1	60 Days
Mosaic pattern	T3699	11.80	12.20	13.20

### Sand Pattern Liner

1.5 mm thick, measuring 25 m x 1.65 m.

	Code	NET UNIT PRICE EURO		
		Pe_in	Credit Card1	60 Days
Dark blue	F221	11.80	12.20	13.20



# POOL LININGS

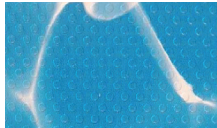
## LINER COATINGS



### Blue Water Patterned Liner - Non-Slip

1.5 mm thick, measuring 25 m x 1.65 m.

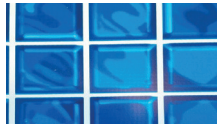
	Code	NET UNIT PRICE EURO		
		Pe_in	Credit Card1	60 Days
Mosaic pattern	F-286	11.80	12.20	13.20



### Blue Water Patterned Liner - Non-Slip

1.5 mm thick, measuring 25 m x 1.65 m.

	Code	NET UNIT PRICE EURO		
		Pe_in	Credit Card1	60 Days
Mosaic pattern	F-286-S	11.80	12.20	13.20



### Mosaic Pattern Liner - Non-Slip

1.5 mm thick, measuring 25 m x 1.65 m.

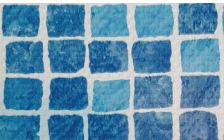
	Code	NET UNIT PRICE EURO		
		Pe_in	Credit Card1	60 Days
Dark blue	F-520	11.80	12.20	13.20



### Gray Wall

1.2 mm thick, measuring 25 m x 1.65 m.

	Code	NET UNIT PRICE EURO		
		Pe_in	Credit Card1	60 Days
Gray	F-233	11.80	12.20	13.20



### Blue Mosaic Pattern Liner - Non-Slip

1.5 mm thick, measuring 25 m x 1.65 m.

	Code	NET UNIT PRICE EURO		
		Pe_in	Credit Card1	60 Days
Mosaic pattern	EXT-768-S	11.80	12.20	13.20

# POOL LIGHTING EQUIPMENT

## ECONOMICAL LED LIGHTING

Economical PAR56 LED bulbs (12 Volt)



SAMSUNG (SMD) PAR56 LED BULB (30W)	Code	Unit Price Euro
White/Day1_1 1 (AC) (4500 Lumens)	FLD01	27.00
Blue (AC) (540 Lumens)	FLD02	30.00
RGB (4-wire) (1250 Lumens)	FLD03	33.00
RGB ON-OFF color switching (2-wire DC) (1250 Lumens)	FLD03-ON	44.00

## ECONOMICAL LED LIGHTING

Economical SUPERFINE pool lighting fixture (Ø 300 mm)

Pool lighting fixture made of ABS, with LED bulb. Compatible with all pool casings (joker connection).



30W Samsung SMD LED Bulb (1 piece complete set)	Code	Unit Price Euro
White (AC) (4500 Lumens)	FLD21	52.50
Day1_1 1 (AC) (4500 Lumens)	FLS23	52.50
Blue (AC) (540 Lumens)	FLS22	55.00
RGB (4-wire DC) (1250 Lumens)	FLD27	58.00
SL1M reinforced concrete casing depth 6cm		10.00
Stainless steel frame difference <sup>1</sup>		35.00

Economical socket-type pool lighting fixture (Ø 300 mm)

Pool lighting fixture made of ABS, complete with LED bulb.



30W SMD LED BULB 1LE COMPLETE	Code	Unit Price Euro
White (AC) (4500 Lumens)	FLD28	60.00
Day1_1 1 (AC) (4500 Lumens)	FLD28-G	60.00
Blue (AC) (540 Lumens)	FLD29	63.00
RGB (4-wire DC) (1250 Lumens)	FLD29-RGB	65.00
Stainless steel frame difference <sup>1</sup>		35.00

# POOL LIGHTING EQUIPMENT

## ECONOMICAL FLAT LED LIGHTING

### Economical Slim LED Bulb S1va Top Mounted Projector (Ø 260 mm)

Made of ABS, 33 mm thick, includes power cable and mounting bracket, 12 Volt.



30W SMD LED	Code	Unit Price Euro
White (4500 Lumens)	FLDS76	38.00
Day 1_1 1 (4500 Lumens)	FLDS76-G	38.00
Blue (540 Lumens)	FLDS77	40.00
RGB (4-wire) (1250 Lumens)	FLDS79	40.00
Stainless steel frame difference1		35.00

### Economical LED bulb M1D1 s1va top spotlight (Ø 160 mm)

Made of ABS, 20 mm thick, includes power cable and mounting bracket, 12 Volt.



2W SMD LED	Code	Unit Price Euro
White (860 Lumens) (AC)	FLDS80	30.00
unit1_1 1 (860 Lumens) (AC)	FLDS80-G	30.00
GB (4 Cables 750 Lumens) (DC)	FLDS81	33.00
Blue (540 Lumens) (AC)	FLDS82	35.00
Lionless steel frame difference1		30.00

### Economical LED bulb M1N1 s1va-mounted floodlight (Ø 125 mm)

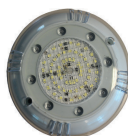
Made of ABS, 25 mm thick, includes power cable and mounting bracket, 12 Volt.



8W BULB 1LE	Code	Unit Price Euro
White (750 Lumens) (AC/DC)	FLDS83	25.00
Day1_1 1 (750 Lumens) (AC/DC)	FLDS83-G	25.00
Blue (350 Lumens) (AC/DC)	FLDS84	25.00
RGB (4 Cables 600 Lumens) (DC)	FLDS85	30.00
Stainless steel frame difference1		25.00

### Economical LED MINI pool and step lighting (Ø 100 mm)

Ideal for pool and step lighting with a diameter of Ø 10 cm. Heat-resistant, insulated housing. Very strong glass resistant to UV rays and impact. Long-lasting lighting resistant to pool chemicals. IP68 protection class. Patented product. 12 volts.



M1N1 STEP LIGHTING	Lumen	Code	Unit Price Euro
With white LED bulb (15 W)(AC)	1500	IML800	41.00
Day1_1 1 LED bulb (15W)(AC)	1500	IML801	41.00
With blue LED bulb (15 W)(AC)	1500	IML802	41.00
RGB LED bulb (9 W)(DC)	1500	IML804	54.00

# POOL LIGHTING EQUIPMENT

AQUA  
SPHERE



## AQUASPHERE ECONOMICAL LED LIGHTING

### AquaSphere PAR56 LED Water Alt1 Bulbs

IPX 8 protection class.  
25,000 hours lifespan.

25,000 hours of service life.

With PAR56 LED bulb	Strength	Lumen	Code	Unit Price Euro
White	11.5 W	1300 lm	74939	63.00
RGB Remote Control	15 W	900 lm	71740	135.00

### AquaSphere PAR56 LED Underwater Projectors (COMPLETE ASSEMBLY, HOUSING EXCLUDED)

It must be connected to a 12 VAC transformer.  
2.5 m cable.  
IPX 8 protection class.  
Complete underwater searchlight, excluding housing.  
25,000 hours of service life.

25,000 hours of service life.

With PAR56 LED bulb	Strength	Lumen	Code	Unit Price Euro
White LED, White Frame	11.5 W	1300 lm	74940	135.00
RGB LED, White Frame	15 W	900 lm	75829	122.00
RGB LED, Anthracite Frame	15 W	900 lm	75829CL144	170.00
RGB Remote Control	-	-	75828	24.00



## UNDERWATER with PAR56 LED bulb

To properly illuminate your pool, we recommend using one light bulb for every 20 m<sup>2</sup>.

Day 1\_1 For small area and stainless steel pools, the number of bulbs (floodlights) used per m2 is increased.

It must be subtracted.

Floodlights should always be used underwater.

Voltage range:12V AC,Protection class 1:IPX8

**Cable and housing included. Suitable for reinforced concrete pools.**



COMPLETE PROJECTOR	Code	Unit Price Euro
Complete fixture including Souk White Eco LED (16 W) bulb.	66828IP69	162.00
Stainless steel front frame for this projector.	4403010301	82.39

## PAR 56 LED Underwater Bulb



	Code	Unit Price Euro
Cold white (18W bulb)	63132	84.00

# POOL LIGHTING EQUIPMENT

## ECONOMIC POOL LIGHTING ACCESSORIES

300W / 12V Halogen economical light bulb



Par56	Code	Unit Price Euro
300W / 12V Par56 bulb	00370/1	24.00

Economic transformer



It has a full resin-filled LED indicator and fuse. It has aluminum coils.

FILLED T1P	Code	Unit Price Euro
100 W / 12 / 220 V	00383-N	44.00
300 W / 12 / 220 V	00384-Y	50.00
600 W / 12 / 220 V	00385-Y	115.00

Economical Pool Fixture 1 - Concrete Blind Frame

A 30 x 30 cm concrete pool lamp housing made of plastic.



	Code	Unit Price Euro
Lamp Tas1	25462-E	6.00

Economical TTR Cable



TTR CABLE	Code	Unit Price Euro
2 x 1.5 (1 meter)	777001533	LFS
4 x 1 (1 meter)	77700154	LFS
4 x 2 (1 meter)	77700153	LFS
4 x 2.5 (1 meter)	77700155	LFS

Economical Cable Sleeve (Gas Hose)

	Code	Unit Price Euro
1 meter (1/2")	77700156	LFS

Economical Pool Fixture Housings (1 for)



	Code	Unit Price Euro
Mini beehive Ø170	FLD-118-CARRIAGE	LFS
Standard housing Ø225	00349-Y	18.29

Liner Gasket Set for Economical Pool Lighting Fixture



	Code	Unit Price Euro
Liner Gasket Set	FLDLINERKIT	22.00

# POOL LIGHTING EQUIPMENT

## ECONOMICAL DECORATIVE FOUNTAIN LED LIGHTING

### Economical mini spotlights for ornamental ponds<sup>1</sup>



ABS-made, foot-mounted type. Available in white and black, Ø90 mm diameter ornamental pond light fixture, 12 Volt, 3 W DC.

Foot type (ABS)	Code	Unit Price Euro
White/Day1_1 1 12W (DC) (390 lumens)	<b>FLD130</b>	<b>34.00</b>
Turquoise, RGB, Green, Red, Blue, Purple 3W 12V (DC) (180 lumens)	<b>FLD131</b>	<b>36.00</b>



Made of stainless steel. Ø90 mm diameter ornamental pond fixture, 12 Volts, with stainless steel base.

Leg type (Stainless Steel)	Code	Unit Price Euro
White/Day1_1 1 6W 12V (DC) (390 lumens)	<b>FLD154</b>	<b>78.00</b>
Turquoise, RGB, Green, Red, Blue, Purple 6W 12V (DC) (180 lumens)	<b>FLD155</b>	<b>85.00</b>



ABS-made, plug-in type D63 pipe fitting. ABS-framed ornamental pond fixture with a diameter of Ø90 mm.

Snap-on type (ABS)	Code	Unit Price Euro
White/Day1_1 1 3W 12V (DC) (390 Lumens)	<b>FLD142</b>	<b>34.00</b>
Turquoise, RGB, Green, Red, Blue, Purple 3W 12V (DC) (180 lumens)	<b>FLD143</b>	<b>36.00</b>
K1rm1z1 (DC) 3W (DC) (180 lumens)	<b>FLD143K</b>	<b>36.00</b>
Blue (DC) 3W (DC) (180 lumens)	<b>FLD143M</b>	<b>36.00</b>



Made of 304 grade stainless steel. Snap-on type for D63 pipe. Ø90 mm diameter ornamental pond fitting.

Snap-on type (stainless steel)	Code	Unit Price Euro
White/Day1_1 1 3W 12V (DC) (390 Lumens)	<b>FLD142PC</b>	<b>56.00</b>
Turquoise, RGB, Green, Red, Blue, Purple 3W 12V (DC) (180 lumens)	<b>FLD143PC</b>	<b>60.00</b>

# POOL LIGHTING EQUIPMENT

## ECONOMICAL DECORATIVE FOUNTAIN LED LIGHTING



Economical LED lighting for decorative ponds.

Made of 304 grade stainless steel. Ø130 mm diameter ornamental pool fixture, with stainless steel base.

Par 38 LED bulb	Code	Unit Price Euro
White-Day1_1 1 9W 12V (1200 Lumens)	<b>FLD164</b>	<b>85.00</b>
RGB, Blue, Green, Purple, Turquoise 9W 12V (700 Lumens)	<b>FLD170</b>	<b>88.00</b>



Decorative pool fixture made of 304 grade stainless steel, Ø175 mm diameter. Fountain nozzle not included.

Simit Type LED Fountain Lighting	Code	Unit Price Euro
White-Day1_1 1 12W 24V (1600 Lumens)	<b>FLD213</b>	<b>98.00</b>
RGB 12W 24V (850 Lumens)	<b>FLD216</b>	<b>106.00</b>
1" Foam Sprinkler		<b>32.00</b>

## PANELS FOR ECONOMIC SWIMMING POOLS AND DECORATIVE POOLS

### RGB animation board (12V - 24V) (DC)



The panel includes a transformer, RGB lighting system, and remote control.

	Code	Unit Price Euro
For 0-5 Lamps	<b>PN/RGB0</b>	<b>180.00</b>
For 5-10 lamps	<b>PN/RGB</b>	<b>200.00</b>
For 10-15 lamps	<b>PN/RGB2</b>	<b>235.00</b>
For 15-20 lamps	<b>PN/RGB3</b>	<b>250.00</b>

### Engine room control panel



SINGLE-PHASE / TRI-PHASE Panel	Code	Unit Price Euro
1 pump, 1 group of lamps + residual current relay.	<b>PN/1-1</b>	<b>330.00</b>
1 pump, 1 group of lamps, two timers. + leakage current relay	<b>PN/1-1CT</b>	<b>470.00</b>
2 pumps, 2 groups of lamps + residual current relay.	<b>PN/2-2</b>	<b>480.00</b>
2 pumps, 2 groups of lamps, two timers. + leakage current relay	<b>PN/2-2CT</b>	<b>630.00</b>

**Notes:**All of our panels are equipped with residual current devices.

Installation of a residual current device (RCD) without grounding in the pool machine room, along with instructions. **It is absolutely forbidden.**

# FIBER OPTIC LIGHTING EQUIPMENT

## FIBER OPTIC LIGHTING SYSTEMS

### Sauna - Turkish bath fiber optic ceiling lighting system

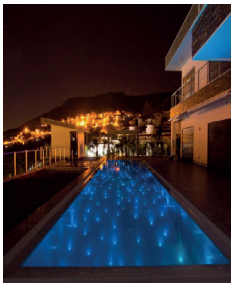
- " RGB or monochrome 1k source 1
- " 150 pieces of fiber optic cable, 2 meters long (100 pieces of Ø0.75 mm, 40 pieces of Ø1 mm, 10 pieces of Ø1.5 mm)

	Code	Unit Price Euro
2 x 2 m RGB or single color lighting		LFS



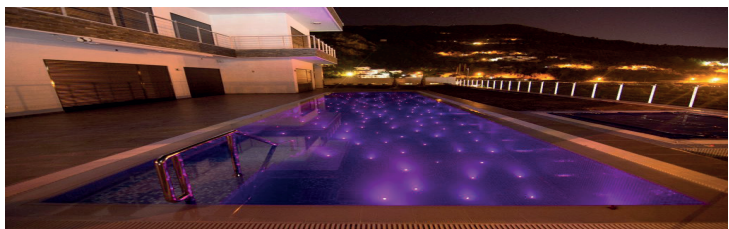
### swimming pool fiber optic lighting system

RGB or monochrome 90W 1kW power supply, complete set including PVC jacketed fiber optic cable and termination kit.

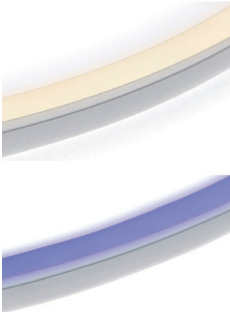


	Code	Unit Price Euro
<b>4 x 8 M POOL 1 FOR 1</b> Complete system with RGB or monochrome 1k source, 1,600 m cable (2 mm 550 meters, 12-wire Ø0.75 mm cable 50 m), and 60 1k termination strips.		LFS
<b>5 x 10 M POOL 1 FOR 1</b> Complete system with RGB or monochrome 1k source, 1800 m cable (Ø2 mm 700 m, 12-strand Ø0.75 mm cable 100 m), and 85 1k termination strips.		LFS
<b>6 x 12 M POOL 1 FOR 1</b> Complete system with RGB or monochrome 1k source, 1050 m cable (Ø2 mm 950 m, 12-piece Ø0.75 mm cable 100 m), and 110 1k termination strips.		LFS

Note: Please inquire about pricing for other projects.



# POOL LIGHTING EQUIPMENT



Cable connection options



Standard



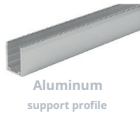
Left side



Lower



right side



Aluminum support profile



Stainless steel flex. support profile

## ECONOMIC LED STRIP LIGHTING

### Flexible Strip LED Lighting

IP68 linear flexible strip LED lighting system suitable for underwater use.

- " Class A energy efficiency.
- " With a bending diameter of 12 cm, it is ideal for use on curved surfaces. It is custom-made to fit pool dimensions.
- " Cable exit connectors are specially designed to eliminate blind spots. With the option of cable exiting from the desired edge, it ensures perfect compatibility with your project.
- " Suitable for mounting with or without aluminum or stainless steel support profiles. Can be manufactured in desired Kelvin values. White, warm white, RGB, and DMX color options are available. Operates with a 24V DC transformer.
- " It is resistant to shocks and impacts and has an IK08 protection class. It comes with a 3-year warranty.
- " The operating temperature is -20°C / +50°C. The LED lifespan is 50,000 hours.
- " Dimmable SMD LED, 1\_1k angle is 210°.



Single color or RGB, DMX strip LED, supports Pro Li, transformer included.	Code	Unit Price Euro
Complete set for a 3 x 6 m pool.	<b>FLD-SL3</b>	<b>LFS</b>
Complete set for a 4 x 8 m pool.	<b>FLD-SL4</b>	<b>LFS</b>
Complete set for a 5 x 10 m pool.	<b>FLD-SL5</b>	<b>LFS</b>
Complete set for a 6 x 12 m pool.	<b>FLD-SL6</b>	<b>LFS</b>

Note: Please inquire about pricing for other projects.



# POOL CLEANING EQUIPMENT

## AQUASPHERE ASR 105 POOL ROBOT

### ASR 105 Pool Robot



SIMPLE, EFFICIENT AND EASY TO USE.  
 + Efficient floor and wall cleaning  
 + Lightweight for ease of use.  
 + Easy-to-clean filter  
 + For ceramic pools

ASR 105	Code	Unit Price Euro
Economic Century 105	WR000502	1,295.00

WHICH POOLS ARE SUITABLE FOR CHINA?	
Pool features	Earth-filled and above-ground rigid-walled pools, maximum 9x4 m
Pool_attached	Rectangular, oval, freeform
Background_attached	Flat, soft, various e-shaped
Pool Surface	Ceramic,Liner,Polyester,PVC,Reinforced Concrete



EXPLANATION	
Cleaning areas1	Floors/Walls
Cleaning Cycle number and duration	1 cycle (Ground, Walls, Waterline 2h:30)
Power supply 1	Before the transformer, connected to the 230 V grid, autonomous.
Orientation	Pre-programmed1
Check system	Palet-2 engine
gear	gear
Brushes	Yes
Opaque filter cover 1	Yes
Security	Pool surroundings, water d1,1 work safety i,tan1, electronic motor protection1
Filter system access	Rigid filter housing with easy top access.

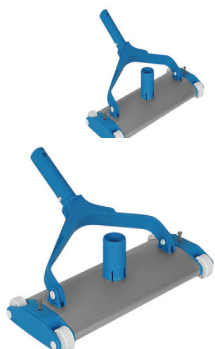


### TECHNICAL SPECIFICATIONS

TECHNICAL SPECIFICATIONS	
Motor say1s1	3
Power supply 1 feed	100-240 VAC; 50 / 60 Hz
Power supply 1	30 VDC
Playing power	150 W
Cable length	15m
Robot a 1r11 1	7.5 kg
Filtering level	150
Filtering capacity	3L
Emi_ a z1 geni_li i	23 cm
Filter system, access	Rigid filter housing with easy top access.



# POOL CLEANING EQUIPMENT



## SUPER ECONOMICAL CLEANING EQUIPMENT

Super economical aluminum horse broom.

Clip-on type	Code	Unit Price Euro
Super Economic Flat 345 mm 1½"	A2015BU	42.00
Super Economic Flat 450 mm 1½"	A2016BU	44.00
Economical Flat 350 mm 1½"	01355-E	46.00
Economical Flat 450 mm 2"	01356-E	54.00

Bolt1 Wide, type	Code	Unit Price Euro
Economical Flat 600 mm 2"	01357-E	175.00
Economical Flat 800 mm 2"	01358-E	225.00



## Super Economical ABS Liner Pool Vacuum Cleaner

Clip-on type	Hose Inlet	Code	Unit Price Euro
Triangular Type	1 1/4"	A2008BU	22.00
Butterfly Type	1 1/2"	A2001BU	22.00



## AstralPool Round Liner Pool Sweeper

Clip-on type	Hose Inlet	Code	Unit Price Euro
Ø 250 mm	1 1/2"	01348	11.00

## POOL SWEEPING HOSES

Made from PE.



	Code	Unit Price Euro
Ø 38 mm (1½") 30 meters	CFVH030	120.00
Ø 50 mm (2") 30 meters	CFVH050	200.00

## POOL DISPENSERS AND SCOOP PILES



### GFK Telescopic Handle

Made of GFK, these broom or brush handles are non-bending and unbreakable. They consist of two interlocking parts.

GFK Telescopic Handle	Code	Unit Price Euro
1.6 - 3.0 m	SZ960	150.00
2.5 - 5.0 m	SZ956	180.00
3.6 - 10.0 m	SZ964	450.00

### ALUMINUM HANDLES

Clip-on type	Code	Unit Price Euro
2 * 2 - 4.0 m	28087-E	34.00
1.4 * 3.5 - 4.9 m	33051MP10	29.00
2 * 2.4 - 4.8 m	28083-E	40.00
2 * 3 - 6.0 m	28084-E	50.00
1.8 * 3.6 - 6.5 m	CCMG85	33.00
2 * 3.5 - 7.0 m	TS11235RB	55.00
3 * 3 - 9.0 m	28085-E	95.00
2.4 * 4.8 - 11.5 m	CCMG84	40.00
4 * 3 - 12.0 m	28089-E	175.00
5 * 3 - 15.0 m	28088-E	165.00

### SUPER ECONOMICAL DISPENSERS

#### Floating type dispensers

	Code	Unit Price Euro
Floating dispenser	A6001BU	12.00



### SUPER ECONOMICAL THERMOMETERS

Celsius & Fahrenheit	Code	Unit Price Euro
Jumbo thermometer	CBM073	14.00
Round thermometer	TH12WBX	14.00
Round thermometer	A7008BU	22.00



### SUPER ECONOMIC TEST KITS

Super Economical pH/Cl s1v111 test kit	Code	Unit Price Euro
Boxed pH/Cl s1v111 test kit	TK01NBU	11.00
Boxed pH/Cl s1v111 test kit	A8007BU	11.00
Backup pH/Cl s1v1s1	TK02NBU	10.00



## POOL SLEEPERS AND SALT DEVICES

### SUPER ECONOMICAL EXCAVATORS



Deep type (clip-on)	Code	Unit Price Euro
Blue net scoop	A3010BU	14.00

Surface type (clip-on)	Code	Unit Price Euro
Navy blue mesh scoop	LS07BU	14.00

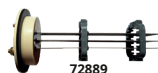
Aluminum handle ladle	Code	Unit Price Euro
1.5 m long, handle-type surface loader	LS15BU	15.00

### SUPER ECONOMICAL POOL BRUSHES

Clip-on type	Code	Unit Price Euro
45 cm wide brush	A5023BU	14.00
26 cm wide brush	BR02BU/P	13.00



64315



72889

### BERING EKONOM1K SALT ELECTROL1Z DEVICES

#### BERING Sel, salt electrolysis device1

Self-cleaning electrode, reverse polarized (every 4 hours) salt electrolysis device. Ideal for pools up to 35 m<sup>3</sup>. Manual production setting (0-100%). 3 different LED indicators: solid green: production, solid red: device in standby mode, flashing red: fault (insufficient flow rate or salt quantity). Single electrode for 35 m<sup>3</sup>. IP24 waterproof housing.

Automatic calibration.

	Code	Unit Price Euro
Bering Sel salt device1 - 8 gr/h	64315	810.00
Electrode 35 m3	72889	668.30

# DISINFECTION SYSTEMS

## IDEGIS DOMOTIC SERIES SALT ELECTROLYSIS SYSTEMS



### Domotic salt electrolyzer<sup>1</sup>, with pH + ORP control.

In addition to chlorine production, pH and ORP control are also performed. Production stops if the chlorine level reaches the set value. It is shipped with a pH, ORP sensor, calibration fluids, and probe holder. It gives an alarm at high (8.5+) and low (6.5-) pH levels. **The pH dosing pump must be supplied separately.**

Domotic +	Code	Unit Price Euro
12 gr/h (50 mswimming pool)	DOM-12+	3,400.00
24 gr/h (80 mswimming pool)	DOM-24+	3,700.00

### Domotic salt electrolysis device<sup>1</sup>, with pH control



DOMOTIC Series Salt Electrolysis Devices<sup>1</sup> 50 to 120m They can be used in private pools of varying volumes. They feature a self-cleaning titanium plate electrode chamber. High and low salt level alarms, a transparent electrolysis chamber, 12,000 hours electrode life, and proportional operation in the 10-100% range with 10% increments.

For electrolysis, it is recommended to initially add 4-6g/lit of salt to the pool water.

In addition to chlorine production, pH control is also performed. Includes pH sensor, calibration fluid, and probe holder.

It gives an alarm at high (8.5+) and low (6.5-) pH levels. **The pH dosing pump must be supplied separately.**

Domotic C-PH	Code	Unit Price Euro
12 gr/h (50 mswimming pool)	DOM-12PH	2,240.00
32 gr/h (120 mswimming pool)	DOM-32PH	2,740.00

## IDEGIS TECHNO SERIES SALT ELECTROLYSIS SYSTEMS

### Tecno salt electrolysis device<sup>1</sup>



TECNO Series Salt Electrolysis Devices can be used in private pools with volumes between 25 and 160 m<sup>3</sup>.

It has a titanium plate electrode reservoir that cleans it.

Transparent electrolysis chamber, High and low salt level alarms, 10,000 hours electrode life, 20-100% range.

20% increase proportional work.

For electrolysis, it is recommended to initially add 4-6g/lit of salt to the pool water.

Tecno	Code	Unit Price Euro
40 gr/h (160 mswimming pool)	DT-40	2,300.00

# DISINFECTION SYSTEMS



## IDEGIS TECNO SER1S1 SALT ELECTROLYSIS SYSTEMS1

Tecno salt electrolysis device1, with pH control.

In addition to chlorine production, pH control is also performed. A pH dosing pump must be supplied along with the electrolysis device. It gives an alarm at high (8.5+) and low (6.5-) pH levels. Calibration fluid, pH electrode and electrode holder are included.

Note: Dosing pump 1 is not included.

Techno ph	Code	Unit Price Euro
7 gr/h (25 m swimming pool)	DT-7PH	1,755.00
12 gr/h (50 m swimming pool)	DT-12PH	1,870.00
21 gr/h (80 m swimming pool)	DT-21PH	2,250.00
30 gr/h (120 m swimming pool)	DT-30PH	2,380.00
40 gr/h (160 m swimming pool)	DT-40PH	2,800.00

## IDEGIS TUZ ELEKTROLIZ S1STEM1 ACCESSORIES



	Code	Unit Price Euro
Electrode reservoir	R-127	82.66
Poolstation	PS-001	1,040.00

## SER1 200 AUTOMATIC CONTROL DEVICES

It can control compact pH/ORP/free chlorine levels. It is 100% compatible with salt electrolysis devices.

- " Ak1111 dosing function
- " Guaranteed dosing thanks to the pump stop pH function.
- " Easy service with integrated dosing thanks to the Pump Express function.

Series 200 Control Device1



pH	Code	Unit Price Euro
pH control device1	RPH-200	575.00
pH controller1 (including dosing pump1)	RPH-201	695.00



ORP	Code	Unit Price Euro
ORP control device1	RMV-200	640.00
ORP controller1 (including dosing pump1)	RMV-201	810.00

# DISINFECTION SYSTEMS

## DEL OZONE SYSTEM (FOR PRIVATE POOLS)

### DEL OZONE APG Ozone Generator



Ozone systems provide clean, clear, and safe water for your pool, as well as significantly reducing chlorine use.

How does it do this?

"It eliminates 99.9% of harmful pollutants."

"It rapidly oxidizes Cryptosporidium, Giardia, and other chlorine-resistant microorganisms." It significantly reduces chemical demand and increases the effectiveness of disinfectants.

"By breaking down chlorine (chloramines), ozone makes chlorine more effective and the water more comfortable to use." While ozone does so much, it provides up to 90% savings in chlorine.

	Code	Unit Price Euro
DEL OZONE 25 100 m³ for pools up to	EC-10	1,800.00
DEL OZONE 50 200 m³ for pools up to	EC-20	2,250.00
DEL OZONE 100 400 m³ for pools up to	EC-40	3,150.00
MDV and Mounting Kit	MDV-10	1,270.00
Universal venturi injector kit (bypass L1)	9-0210-11	2,170.00

## ECONOMICAL pH/REDOX REPLACEMENT ELECTRODES



### Economical pH/Redox replacement electrodes1

Economic	Code	Unit Price Euro
pH electrode	00043011	125.00
Rx electrode	00043012	135.00

### Economical chemical drums



Polyethylene	Code	Unit Price Euro
100 liters	01314-M	90.00
200 liters	01314-Y	140.00
300 liters	01314-E	240.00

# DISINFECTION SYSTEMS



## MANUAL ECONOMIC DOSING PUMPS

### Micro manual dosing pump1 (analog)

Electromagnetic constant flow analog dosing pump, ON-OFF adjustable, pump body reinforced with PP. Comes with standard accessories including a 2.5 meter power cable and wall mounting kit.



	Code	Unit Price Euro
2 l/h 12 bar	E04CA1202857	200.00
5 l/h - 9 bar	E04CA0905857	200.00
10 l/h - 11 bar	E04CA0410857	200.00

### Micro manual dosing pump1 (with digital control and level sensor)

Electromagnetic constant flow digital dosing pump, ON-OFF adjustable, pump body reinforced with PP. Includes 2.5 meter power cable and wall mounting kit, suction filter, check valves, and hoses.



	Code	Unit Price Euro
2 l/h 11 bar	E01CA1102857	240.00
5 l/h - 8 bar	E01CA0805857	240.00
10 l/h - 2 bar	E01CA0210857	240.00

## ECONOMIC DOSAGE REGULATORS

### MP Dual PH/RX Regulator Salt Dispenser Control Panel



- " The pH/Redox control system with regulator measures pH and doses, measures chlorine in Rx units, and switches the salt dispenser on and off. 3
- " operating modes: continuous, ON/OFF, and ratio.
- " Programmable dose alarm, start
- " delay option, optional
- " temperature and level sensor.
- " Peristaltic pH dosing pump, capacity 6 l/h, 1 bar,
- " 230V AC 50 Hz power supply, IP-65 protection
- " class, STAND-BY mode for dosing stop, ideal for
- " saline solutions with gold-tipped Rx electrode,
- " backlit digital LCD display.

MP Dual	Code	Unit Price Euro
Peristaltic pH dosing regulator salt dispenser control system (complete)	11/20/2015	850.00

# DISINFECTION SYSTEMS



508AA0116857



48327M



S110A0210857



48301M-RX



## ECONOMIC DOSAGE REGULATORS AND CONTROL PANELS

### Micro (pH/Rx) dosing regulators (Peristaltic)

Peristaltic dosing regulator, electrode holder, calibration solution and mounting kit. Supplied with injection valve, suction hose and discharge hose and pH electrode or Rx electrode. Wall mounting kit included, IP 65 protection class. Dosing pumps have a capacity of 1.6 l/h - 1 bar.

Includes electrode probe.	Code	Unit Price Euro
Micro Rx regulator	509AA0116857	370.00
Micro pH regulator	508AA0116857	370.00
Micro Rx regulator panel mounted + with pre-filter	48327M-RX	640.00
Micro pH regulator panel mounted + with pre-filter	48327M-PH	640.00

### Micro (pH/Rx) dosing regulators (Membrane)

Membran1 dosing regulator, electrode holder, calibration solution and mounting kit. Supplied with injection valve, suction hose and discharge hose and pH electrode or Rx electrode. Wall mounting kit included, IP 65 protection class.

Includes electrode probe.	Code	Unit Price Euro
Membran1 Rx regulator-10 l/h, 2 bar	S110A0210857	450.00
Membran pH regulator - 5 l/h, 2 bar	S100A0205857	450.00
Membran1 Rx regulator-10 l/h, 2 bar, panel mounted + pre-filter.	48301M-RX	700.00
Membran pH regulator-5 l/h, 2 bar, panel mounted + pre-filter.	48301M-PH	700.00

### Micro UP POOLGUARD Wi-Fi Control Panel (Peristaltic dosing pump1)

Includes 1 peristaltic pH regulator 3 l/h - 1 bar, 1 peristaltic Rx regulator 3 l/h - 1 bar, 1 filtered and 1 transparent electrode carrier chamber, pH electrode and Rx electrode, and adjustment solutions. Panel-mounted system (plug & play). The device can be controlled via Wi-Fi and a mobile application.

	Code	Unit Price Euro
Panel with peristaltic dosing pump (with Wi-Fi connection)	48327W	1,450.00

# DISINFECTION SYSTEMS



## ECONOMIC CONTROL PANELS

### Micro POOLGUARD Control Panel (Membrane dosing pump1)

Includes 1 pH regulator 5 l/h 2 bar, 1 Rx regulator 10 l/h 2 bar, 1 pre-filter, 1 transparent electrode holder, 1 pH electrode, 1 Rx electrode, and adjustment solutions. Panel-mounted system (plug & play).

	Code	Unit Price Euro
Membrane dosing pump panel	48301-M	1,090.00

### Micro POOLGUARD Control Panel (Peristaltic dosing pump1)

Includes 1 pH regulator 1.6 l/h 1 bar, 1 Rx regulator 1.6 l/h 1 bar, 1 pre-filter, 1 transparent electrode holder, 1 pH electrode, 1 Rx electrode, and adjustment solutions. Panel-mounted system (plug & play).

	Code	Unit Price Euro
Peristaltic dosing pump panel	48327M	1,090.00

Digital, pH/Redox controlled, 2 peristaltic pumps.  
Complete set with pH/Redox sensor, calibration liquid, and suction/discharge accessories.

### Dose Pool Panel (Wi-Fi Control)

Digital, 1.5 - 5 lt/h 1.5 bar pH/Redox peristaltic dosing PoolDose Panel pump, with pH/Redox sensor, 0 + 14 pH 0 + 999mV. Wifi controlled display, automatic pH/Redox measurement control system with sensor holders and calibration fluids. Pump head and check valves made of PVDF material (for 150 m3 pools).

	Code	Unit Price Euro
Kemi Dose pool panel with Wi-Fi control.	48327W-S	1,575.00

Digital, 5 lt/h 5 bar pH/Redox solenoid dosing pump, KemiDose Panel pH/Redox sensor, 0+14pH/ 0+999mV display, Wifi controlled, automatic pH/Redox measurement control system with sensor holders and calibration fluids. Pump head and check valves made of PVDF material (for 500 m3 pools).

Complete set with digital, pH/Redox controlled, 2 dosing pumps, pH/Redox sensor, calibration liquid, and suction/discharge accessories.

	Code	Unit Price Euro
KerniDose Pool Panel	48301M-S	1,680.00

# DISINFECTION SYSTEMS



**Blue lagoon**  
UV-C and Pool equipment



## BLUE LAGOON XPERT UV-C DISINFECTION DEVICE (MEDIUM PRESSURE)



### Blue Lagoon Xpert UV-C ultraviolet disinfection system

A medium-pressure UV-C device with AISI 316 stainless steel body, suitable for use with salt water, UL and ETL certified, and a lamp life of 9000 hours.

Blue Lagoon	Code	Unit Price Euro
XPERT 400 (400 WATT)	BPM 00401	4,600.00
XPERT 600 (600 WATT)	BPM 00601	6,200.00
XPERT 1000 (1000 WATT)	BPM 01001	13,100.00
XPERT 1500 (1500 WATT)	BPM 01501	13,650.00
XPERT 1500 (1500 WATT Manual Cleaning)	BPM 01502	19,950.00

## BLUE LAGOON BUSTER UV-C DEVICE (MEDIUM PRESSURE MANUAL)

### Blue Lagoon UV-C ultraviolet disinfection system

Ideal for all machine rooms requiring high-quality disinfection but with limited installation space. AISI-316L stainless steel housing. Ø 63mm - Ø 50mm adapters included. Housing diameter 70 mm. Maximum operating pressure is 2 bar. 230 V single-phase. Includes a timer showing remaining lamp life.



	Code	Unit Price Euro
80 watts (Ø 114)	BP 7082	2,660.00
140 WATT (Ø 114) (AMALGAM)	BP07133	2,610.00
140 WATT (Ø 154) (AMALGAM)	BP07132	3,795.00
420 WATT (Ø 219)(AMALGAM)	BP07392	6,237.00

## COMPACT AOP UV C1 DEVICE



	Code	Unit Price Euro
Compact AOP UV Device 1 75	BH12752	1,720.00
Compact AOP UV Device1	BH 12753	1,680.00

## DUPLEX UV-C C1 DEVICE

Suitable for all pets. Includes mounting hardware. Maximum pressure 2.5 Bar, length 100 cm. Ø 63



	Code	Unit Price Euro
80 watts (17 m <sup>3</sup> /h) (9,000 hours lamp life)	BP 08752	985.00
140 watt (Amalgam) (23 m <sup>3</sup> /h) (16,000 hours lifespan)	BP 08132	1,930.00

# DISINFECTION SYSTEMS



**Blue lagoon**



## BLUE LAGOON UV-C 4 ALL

### Blue Lagoon 4ALL UV-C ultraviolet disinfection system

Includes timer, suitable for all pools, horizontal and vertical mounting, easily installed in new and old pool systems, maximum pressure 2 Bar, length 100 cm, diameter 70 mm.

Blue Lagoon	Code	Unit Price Euro
40 W (11 m <sup>3</sup> /h) (9000 hours lamp life)	<b>BD01402</b>	<b>915.00</b>
75 W (16 m <sup>3</sup> /h) (9000 hours lamp life)	<b>BD01752</b>	<b>945.00</b>
130 W (Amalgam) (22 m <sup>3</sup> /h) (16,000 hours lamp life)	<b>BD01132</b>	<b>1,635.00</b>

## BLUE LAGOON INOX UV-C

### Blue Lagoon INOX UV-C ultraviolet disinfection system

316 L stainless steel body, with timer and flow switch, maximum pressure 5 bar, 100 cm long, Ø 114 mm diameter.

	Code	Unit Price Euro
75 watts (18 m <sup>3</sup> /h), 5 bar, 9000 hours lamp life.	<b>BP02752</b>	<b>3,350.00</b>
130 WATT (22 m <sup>3</sup> /h) Amalgam, 5 Bar 14.00 hours lamp life	<b>BP02132</b>	<b>4,450.00</b>

## BLUE LAGOON SIGNAL UV-C

316 L stainless steel body, with timer and flow switch, 2 Bar, 100 cm long, Ø 70 mm diameter.

	Code	Unit Price Euro
40 W (11 m <sup>3</sup> /h) 9000 Hours lamp life	<b>BH 11402</b>	<b>960.00</b>
75 W (16 m <sup>3</sup> /h) 9000 Hours lamp life	<b>BH 11752</b>	<b>980.00</b>
130 W (22 m <sup>3</sup> /h) Amalgam lamp with a lifespan of 16,000 hours.	<b>BH 11132</b>	<b>1,640.00</b>

## TECH UV-C COPPER 1ON1ZATION

316 L stainless steel body, 2.5 Bar. Ø = 70 mm L = 100 cm

	Code	Unit Price Euro
40 watts (11 m <sup>3</sup> /h) (9,000 hours lamp life)	<b>BH 04402</b>	<b>1,864.00</b>
75 watts (16 m <sup>3</sup> /h) (9,000 hours lifespan)	<b>BH 04752</b>	<b>2,040.00</b>

# DISINFECTION SYSTEMS



## INOX LOW PRESSURE UV LAMP SYSTEMS / MULTIPLE LAMP SYSTEMS

Blue Lagoon low pressure UV-C ultraviolet disinfection system

316L stainless steel housing, 16,000 hour lamp life.



	Code	Unit Price Euro
INOX 400-204 2X200 W 85 m3/h	<b>INOX 400-204</b>	LFS
INOX 400-168 3X140 W 49 m3/h	<b>INOX 420-168</b>	8,525.00
INOX 600-219 3X200 W 133 m3/h	<b>INOX 600-219</b>	LFS
INOX 975-306 3X325 W 531 m3/h	<b>INOX 975-306</b>	LFS
INOX 1950-306 6X325 W 531 m3/h	<b>INOX 1950-306</b>	LFS

## INOX LOW PRESSURE UV LAMP SYSTEMS

PRO INOX series features a 316 L stainless steel body and a lamp life of 16,000 hours.



	Code	Unit Price Euro
INOX 40-76.40 W 3 m3/h	<b>INOX 40-76</b>	3,640.00
INOX 75-76.75 W 12 m3/h	<b>INOX 75-76</b>	3,830.00
INOX 140-76, 140 W 12 m3/h	<b>INOX 140-76</b>	4,300.00
INOX 75-114.75 W 22 m <sup>3</sup> /h	<b>INOX 75-114</b>	4,800.00
INOX 140-114 140 W 22 m <sup>3</sup> /h	<b>INOX 140-114</b>	4,700.00
INOX 200-76,200 W 22 m3/h	<b>INOX 200-76</b>	5,150.00
INOX 200-154,200 W 37 m3/h	<b>INOX 200-154</b>	7,430.00
INOX 400-54,400 W 5.5 M3/h	<b>INOX 400-54</b>	LFS
INOX 400-76,400 W 22 m3/h	<b>INOX 400-76</b>	LFS

## INOX OPT1GUARD UV SYSTEMS1

316L stainless steel housing, pressure resistant up to 12 Bar, 16,000 hours lamp life, IP 67 protection.



	Code	Unit Price Euro
OPTIGUARD 2.4 ,191 M3/h ,6X400 W	<b>Optiguard 2.4</b>	LFS
OPTIGUARD 4.0 ,339 M3/h ,10X400 W	<b>Optiguard 4.0</b>	LFS
OPTIGUARD 7.2 ,530 M3/h ,18X400 W	<b>Optiguard 7.2</b>	LFS
OPTIGUARD 9.6 ,763 M3/h ,24X400 W	<b>Optiguard 9.6</b>	LFS
OPTIGUARD 13.6, 1727 M3/h, 34X400 W	<b>Optiguard 13.6</b>	LFS



**Blue lagoon**  
UV-C and Pool equipment

## HDPE LOW PRESSURE UV SYSTEMS

### HDPE low pressure UV systems

316L stainless steel housing, 16,000 hour lamp life.

	Code	Unit Price Euro
HDPE 40-75 SUT 12 m3/h, 1x40 W	HDPE 40-75 SUT	1,740.00
HDPE 80-75 SUT 12 m3/h, 1x80 W	HDPE 80-75 SUT	1,970.00
HDPE 75-110 SUT 22 m3/h, 1x75 W	HDPE 75-110 SUT	2,680.00
HDPE 140-110 SUT 22 m3/h, 1x140 W	HDPE 140-110 SUT	3,160.00
HDPE 200-110 SUT 22 m3/h, 1x200 W	HDPE 200-110 SUT	3,440.00
HDPE 200-160 SUT 37 m3/h, 1x200 W	HDPE 200-160 SUT	3,840.00
HDPE 400-200 SUT 79 m3/h, 2x200 W	HDPE 400-200 SUT	5,800.00
HDPE 600-225 SUT 129 m3/h, 3x200 W	HDPE 600-225 SUT	7,540.00
HDPE 975-315 SUT 445 m3/h, 3x325 W	HDPE 975-315 SUT	14,480.00
HDPE 1950-315 SUT 445 m3/h, 6x325 W	HDPE 1950-315 SUT	18,750.00





## ELECR POOL WATER ELECTRIC HEATERS

### Electro Evolution 2 (Complete Titanium) electric pool water heater 1s1t1c1s1

Its housing is made of titanium. AK1, flow sensor and mounting parts together with the control panel The minimum flow rate is 1 m<sup>3</sup>/h for devices between 3-6 kW and 4 m<sup>3</sup>/h for devices between 9-24 kW. The maximum flow rate is 17 m<sup>3</sup>/h.

Recommended flow rate: 10 m<sup>3</sup>/h

Supplied with connection elements (1 1/2").

Working pressure 4 bar.

It can be mounted vertically or horizontally.

Analog Control	Code	Unit Price Euro
6 kW Single-Phase/Three-Phase	E2-V-6	1,045.00
9 kW Single-Phase/Three-Phase	E2-V-9	1,080.00
12 kW Single-Phase/Three-Phase	E2-V-12	1,090.00
15 kW Three-Phase	E2-3-15	1,100.00
18 kW Three-Phase	E2-3-18	1,200.00
24 kW Three-Phase	E2-3-24	1,275.00
Digital Control	Code	Unit Price Euro
15 kW Three-Phase	E2-D3-15	1,360.00
18 kW Three-Phase	E2-D3-18	1,500.00
24 kW Three-Phase	E2-D3-24	1,550.00

### Electro Flow Line 2 (Complete Titanium) Analog Controlled Electric Pool Water Fluid 1s1t1c1s1

The minimum flow rate is 1 m<sup>3</sup>/h for devices between 3-6 kW and 4 m<sup>3</sup>/h for devices between 9-24 kW. The maximum flow rate is 17 m<sup>3</sup>/h.

Recommended flow rate: 10 m<sup>3</sup>/h

Supplied with connection elements (1 1/2").

Working pressure 4 bar.

It can be mounted vertically or horizontally. Requires an external control panel.

Titanium element 1s1t1c1	Code	Unit Price Euro
6 kW three-phase	FL2-3-6	680.00
9 kW three-phase	FL2-3-9	695.00
9 kW single-phase	FL2-1-9	695.00
12 kW three-phase	FL2-3-12	705.00
15 kW three-phase	FL2-3-15	720.00
18 kW three-phase	FL2-3-18	730.00
24 kW three-phase	FL2-3-24	775.00

# POOL WATER HEATING

**ELECR**  
ENGINEERING



## ELECR POOL WATER ELECTRIC HEATERS

### Optima Compact digital display electric pool water heater 1s1t1c1s1

Titanium or custom ala\_1m optional heating element. Titanium housing.

The minimum flow rate is 1 m<sup>3</sup>/h for 3-6 kW and 4 m<sup>3</sup>/h for 9-24 kW. The maximum flow rate is 17 m<sup>3</sup>/h.

The touch control panel is mounted on the housing. It is shipped with mounting hardware (1 1/2").

Titanium element 1s1t1c1	Code	Unit Price Euro
6kW single-phase/three-phase, titanium	OCPD-V-6	1,570.00
9kW single-phase/three-phase, titanium	OCPD-V-9	1,600.00
12kW single-phase/three-phase, titanium	OCPD-V-12	1,635.00
15kW three-phase, titanium	OCPD-3-15	1,660.00
18kW triase, titanium	OCPD-3-18	1,755.00
24kW three-phase, titanium	OCPD-3-24	1,800.00

### Titan Optima digital display (titanium) electric pool water heater 1s1t1c1s1

Complete titanium (1 heating element + 1 flow tube), Minimum flow rate 12 m<sup>3</sup>/h, Maximum flow rate 45 m<sup>3</sup>/h, Recommended flow rate 30 m<sup>3</sup>/h, Thermostat 1 x 60pC, with auto reset, Thermostat 1 x 55pC, with manual reset, Smart touchscreen 0-45pC (with 0.5pC difference), Connection parts included: D63 fitting and 2" adapter.

Titanium element 1s1t1c1	Code	Unit Price Euro
18kW three-phase	CP-TS-18	3,250.00
24kW three-phase	CP-TS-24	3,300.00
30kW three-phase	CP-TS-30	3,375.00
36kW three-phase	CP-TS-36	4,050.00
45kW three-phase	CP-TS-45	4,200.00
54kW three-phase	CP-TS-54	4,325.00
60kW three-phase	CP-TS-60	4,500.00
72kW three-phase	CP-TS-72	5,500.00
96kW three-phase	CP-TS-96	7,000.00
120kW three-phase	CP-TS-120	8,700.00



## ELECR POOL WATER EXCHANGERS1

### Elecr G2 Titanium pool water 1s1 e\_exchanger

The serpentine coil is made of titanium, and the flow tube is made of AISI-316 stainless steel. Ideal for saltwater. Maximum working pressure: 4 bar. Primary connection = 1" external thread (with brass fittings). Secondary connection = 1 1/2" or 50-mm PVC pipe connection inlet. Supplied with connection elements.

Titanium element 1s1t1c1	Code	Unit Price Euro
30 kW	G2-HE-30T	530.00
49 kW	G2-HE-49T	690.00
85 kW	G2-HE-85T	820.00
122 kW	G2-HE-122T	1,040.00



### Elecr G2I Special Ala\_1m pool water 1s1 e\_exchanger

The heating element is Incoloy B25, the flow pipe is made of AISI-316 stainless steel. Maximum working pressure: 4 bar. Primary connection = 1" external thread (with brass fittings), Secondary connection = 1 1/2" or 50-mm PVC pipe connection inlet. Supplied with connection elements.

Special Ala_1m 1s1t1c1 element (S/S)	Code	Unit Price Euro
85 kW	G2I-HE-85	580.00

Notes: limited stock available.



# POOL WATER HEATING

## POOL WATER EXCHANGERS1 (WATER/WATER)

Economical plate heat exchangers (water/water)

Made of AISI-316 stainless steel.



	Code	Unit Price Euro
35,000 kcal.	GC-08x8	650.00
50,000 kcal.	GC-08x10	700.00
60,000 kcal.	GC-08x12	740.00
90,000 kcal.	GC-08x14	800.00
120,000 kcal.	GC-08x18	900.00
150,000 kcal.	GC-08x24	1,040.00
180,000 kcal.	GC-08x28	1,140.00
200,000 kcal.	GC-08x32	1,225.00
250,000 kcal.	GC-30x24	1,470.00
300,000 kcal.	GC-30x26	1,590.00
350,000 kcal.	GC-30x27	1,700.00
500,000 kcal.	GC-30x30	2,080.00
700,000 kcal.	GC-30x40	2,300.00

Super economical stainless steel 1s1 e-exchangers (water/water)

Stainless steel pipe-type heat exchangers. Hot water inlet and outlet diameters 1", pool water inlet and outlet diameters 2".



	Code	Unit Price Euro
28kW	MF80	300.00
40kW	MF135	330.00
60kW	MF200	380.00
75kW	MF260	410.00
120kW	MF400	725.00

# INDOOR SWIMMING POOL DEHUMIDIFIERS



## DEHUMIDIFIERS

### Aquarambla Dehumidifiers for Indoor Pools

Automatic defrost, R410A refrigerant, rotary compressor, operating temperature 15-35°C. Control device 1 and remote control are included in the package.

	Code	Unit Price Euro
75 kg / 24 h	<b>MDH75A</b>	<b>4,500.00</b>
125 kg / 24 h	<b>MDH125A</b>	<b>5,300.00</b>
170 kg / 24 h	<b>MDH170A</b>	<b>6,200.00</b>



Technical Specifications	MDH75A	MDH125A	MDH170A
Dehumidification capacity @ 30 oC/70%RH kg/24h	75	125	170
Recovered 1s1 @ 30 oC/70%RH kW	3.2	5	8.2
Noise level dB(A)	48	50	52
Air circulation capacity m3/h	600	1200	1800
Energy supply V / PH / Hz	220 / 1 / 50	220 / 1 / 50	220 / 1 / 50
Operating power kW	1.30	2.00	2.92
Nominal operating current A	5.9	9.1	13.3
Maximum current drawn: A	25	42	63
Yo u_ma water discharge diameter 1 mm OD	16	16	16
Dimensions in mm	905 x 243 x 673	1288 x 243 x 673	1672 x 243 x 673

# OL1MP1K POOL EQUIPMENT

## SUPER ECONOMIC OLYMPIC POOL DIVING PODIUMS

### Super economical jumping platforms<sup>1</sup> (adjustable)

500x500 platform made of polyester and fiberglass with a non-slip surface. It sits on top of the hull. Anchor connections and numbers are not included.



AISI 304	Code	Unit Price Euro
Height: 400 mm	00145-Y	850.00
Height: 700 mm	00144-Y	950.00

AISI 316	Code	Unit Price Euro
Height: 400 mm	00145316-Y	1,000.00
Height: 700 mm	00144316-Y	1,200.00

### Super economical jumping podiums<sup>1</sup> (fixed)

A 500 x 500 fiberglass and polyester platform with a non-slip surface, sitting on top of the fuselage (numbers not included).



AISI 304	Code	Unit Price Euro
500 x 500 x 450 mm	PS101 (SS304)	650.00
633 x 500 x 650 mm	PS201 (SS304)	650.00

AISI 316	Code	Unit Price Euro
500 x 500 x 450 mm	PS101 (SS316)	825.00
633 x 500 x 650 mm	PS201 (SS316)	925.00

## SUPER ECONOMICAL RESCUE EQUIPMENT

### Super economical lifeguard seat

It is manufactured from Ø 43 mm pipe. The steps and seat are made of plastic, and it comes with a life buoy and sunshade attachment system. Maximum load capacity is 100 kg.

AISI 304	Code	Unit Price Euro
Height: 1800 mm	C-56993	1,350.00

AISI 316	Code	Unit Price Euro
Height: 1800 mm	C-56994	1,450.00

### Super economical lifebuoy

Lifebuoy made of styrofoam.



	Code	Unit Price Euro
21" (54 cm) White color	SR01BU	55.00
30" (76 cm) Orange color	SR04	85.00

### The science of super-economic life-saving.

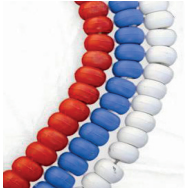
	Code	Unit Price Euro
Made of AISI-304 stainless steel.	ALH01BU	50.00



# OL1MP1K POOL EQUIPMENT

## SUPER ECONOMICAL SEPARATORS

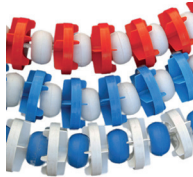
### Super economical Roma model separator



Roman type separator parts are arranged on a plastic cord.

Roma model separator	Code	Unit Price Euro
25 m Red - White	67620-Y	360.00
50 m Red - White	67622-Y	700.00

### Super economical Seoul model separator



Seoul type separator parts are arranged on a plastic rope.

Seoul model separator with plastic cord	Code	Unit Price Euro
25 m Red - White	00196-E	700.00
50 m Red - White	C-67002	1,350.00

### Super economical Moscow model separator

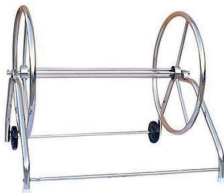


Moscow type separator parts are arranged on a plastic cord.

Moscow model separator	Code	Unit Price Euro
25 m Red - White	67625-Y	750.00
50 m Red - White	00192-Y	1,450.00

## SUPER ECONOMY 1K LANE WINDING CART

### Super economic lane sarg1 arabas1



It is made of stainless steel. It has 2 wheels for easy transport and a brake system for securing it in place.

AISI 304	Code	Unit Price Euro
Length: 1.2 m	C-58860	1,500.00
Length: 1.8 m	C-58859	1,800.00

# OL1MP1K POOL EQUIPMENT

## ECONOMIC ANCHORS

### Economical hook1



It is used with a flat anchor. It is manufactured from AISI-304 stainless steel.

Ø 42 mm	Code	Unit Price Euro
Surface hanger hook1	00140-Y	57.00

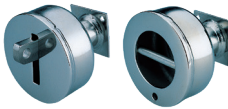
### Economical flat/equal anchors



**Zurich-Wiesbaden** It is manufactured from AISI-304 for the system.

	Code	Unit Price Euro
For Ø 43 mm pipe (Straight)	00141-Y	57.00
For Ø 43 mm pipe (E ik)	00142-Y	57.00

### Economical AISI 304 anchor



It is manufactured from AISI 304 stainless steel.

Wall type	Code	Unit Price Euro
For concrete pools, flat anchors.	00143Y	74.00
For concrete pools, ask111 anchor.	00143YY	74.00

## ECONOMIC SEPARATOR TENSIONERS

### Economic spiral1 separator tensioner



It is manufactured from AISI 304 stainless steel.

Spiral1 separator tensioner	Code	Unit Price Euro
Spiral1 tensioner	C-00207	130.00

### Economical screw separator tensioner



It is manufactured from AISI 304 stainless steel.

Vidal1 separator tensioner	Code	Unit Price Euro
Vidal1 tensioner	C-01468	85.00

### Economical flat separator hook1



It is manufactured from AISI 304 stainless steel.

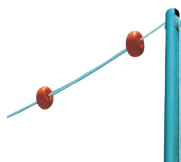
Flat hook for separator	Code	Unit Price Euro
Flat hook	00207-Y	22.00

# OL1MP1K POOL EQUIPMENT

## SUPER ECONOMIC SEMI-EXCAVATED SYSTEMS

### Super economical side jump warning set

It consists of two 1.8m high stainless steel pipes (AISI-304 grade). It is supported by excavation balls. Anchors are not included in the price.



	Code	Unit Price Euro
For a pool width of 12.5 m, 2 x Ø43 mm pipes and warning balls included.	19954L125-Y	250.00
For a pool width of 25 m. Ø43 mm. Includes 2 pipes and warning balls.	19954L250-Y	325.00

### Super economical return warning kit

It is manufactured from two 1.8 m high pipes (AISI-304 grade) of stainless steel. Anchors are not included in the price.



	Code	Unit Price Euro
For a pool with a width of 12.5 m, 2 pieces of Ø43 mm pipes and warning flags are included.	19955L125-Y	320.00
For a pool width of 25 m. Ø43 mm. 2 pipes and warning flags included.	19955L250-Y	400.00

### Super economical rotating panels

300 mm high panel made of AISI-304 stainless steel. Panel support is not included.



	Code	Unit Price Euro
Length: 2 m	00137-Y	510.00
Length: 2.5 m	00138-Y	620.00

### Super economical rotating panel support.

AISI-304 stainless steel panel support piece for use with necessary anchors. Anchors are not included in the price.



	Code	Unit Price Euro
<small>Please specify when placing your order. Specify the dimensions using "L" and "H".</small>	00139-Y	375.00

# OLIMPIC POOL EQUIPMENT



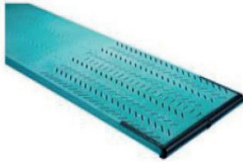
## ALUMINUM JUMPING TRAINS

Aluminum diving boards are made from a single piece of heat-treated aluminum alloy extrusion. A torsional stabilizing insert is added to the base. The boards are coated with a non-slip surface. Pools where these diving boards will be installed must have dimensions conforming to FINA standards.

### Maxi ex - Model B

The 16' Maxiflex model B (also called Maxi-B) is a springboard used in all major competitive branch events worldwide.

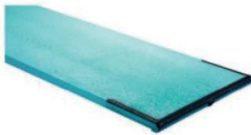
The 16' Maxi-B tapers and narrows from the balance point to the tip of the dive. Its tapered structure allows the board to curve during flexing, increasing the bounce effect. What sets the Maxi-B apart from other models is that the board has 189 grooves at the tip.



	Code	Unit Price Euro
L = 40.6 cm (16')	66-231-330	LFS

### Dura ex

Duraflex is used in recreational swimming pools in commercial pools with dimensions conforming to FINA standards. Duraflex tapers and narrows from the balance point towards the tip of the board.

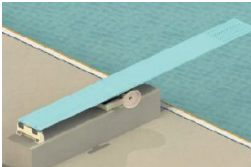


	Code	Unit Price Euro
L = 40.6 cm (16')	66-231-326	LFS

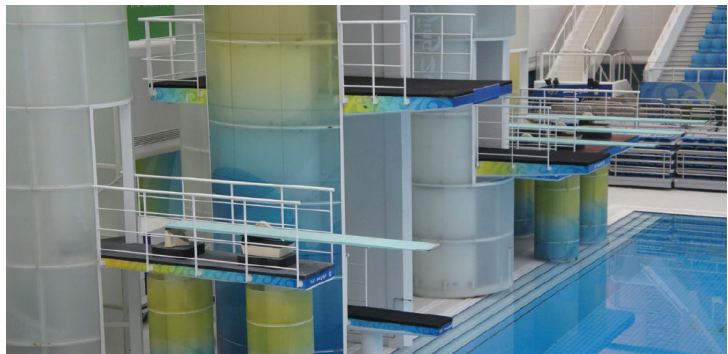
### Short Platforms

The Duraflex short platform is designed to provide a solid foundation for mounting Duraflex aluminum jump boards. It is designed to be mounted to your concrete foundation.

The platform consists of a short iron frame and a support structure. The main components are heavy-duty aluminum castings coated with the highest quality epoxy powder paint.



	Code	Unit Price Euro
Sleeveless	70-231-524	LFS
Sleeved	70-231-520	LFS



# EQUIPMENT FOR ORNAMENTAL FOUNTAINS

## ORNAMENTAL POND NOZZLES

### Komet Water Jet Nozzles1 (Chrome Plated on Sar1)



	Entrance	Code	Unit Price Euro
3/6 T	3/8"	FKOM3/6T	22.00
5/8 T	1/2"	FKOM5/8T	40.00
8/10 T	3/4"	FKOM8/10T	30.00
10/12 T	1"	FKOM10/12T	46.00
15/17 T	1 1/2"	FKOM15/17T	85.00
20/20 T	2"	FKOM20/20T	130.00

### Geyser Water Foam Nozzles1 (Stainless Steel)



	Entrance	Code	Unit Price Euro
20 T	1"	FGAYZER20T	70.00
40 T	1 1/2"	FGAYZER40T	82.00
60 T	2"	FGAYZER60T	110.00
80 T	2 1/2"	FGAYZER80T	200.00
100 T	3"	FGAYZER100T	260.00

### Cascade Water Foam Nozzles1 (Sar1 Cast Iron)



	Entrance	Code	Unit Price Euro
50 T	1"	FKASPIR50	72.00
70 T	2 1/2"	FKASPIR70	120.00
90 T	2"	FKASPIR90	160.00

### Ringing Cascade Nozzles1 (Stainless Steel)



	Entrance	Code	Unit Price Euro
50 T	1"	FKAS50	50.00
70 T	1 1/2"	FKAS70	60.00
90 T	2"	FKAS90	90.00
110 T	2 1/2"	FKAS110	150.00
130 T	3"	FKAS130	210.00

# EQUIPMENT FOR ORNAMENTAL FOUNTAINS

## ORNAMENTAL POND NOZZLES

### \_Champagne Foam Nozzles (Stainless Steel)



	Login.	Code	Unit Price Euro
35-10E	1"	F_AM35-10E	35.00
55-10E	1"	F_AM55-10E	82.00
55-15E	1 1/2"	F_AM55-15E	85.00
75-20E	2"	F_AM75-20E	470.00

### \_Champagne Foam Nozzles (Sar1 Casting)



	Login.	Code	Unit Price Euro
20-10E	1/2"	F_AMS20-10E	75.00
25-10E	3/4"	F_AMS25-10E	105.00
30-10E	1"	F_AMS30-10E	155.00
55-15E	1 1/2"	F_AMS55-15E	410.00

### Film Fountain



	Login.	Code	Unit Price Euro
Stainless	1"	FF1LMP	120.00

### Water Foam Nozzles (Stainless Steel)



	Login.	Code	Unit Price Euro
744 P	1"	FSUKÖP4	130.00
746 P	1 1/2"	FSUKÖP6	165.00
747 P	2"	FSUKÖP7	200.00

### Finger Fan Fountain



	Login.	Code	Unit Price Euro
Stainless Steel 7 Piece Set	1"	FLD7FAN	160.00
Brass casting set of 9	1"	FLDYELPAZE	185.00

# EQUIPMENT FOR ORNAMENTAL FOUNTAINS

## ORNAMENTAL POND NOZZLES

### Water Bell Nozzles (Stainless Steel)



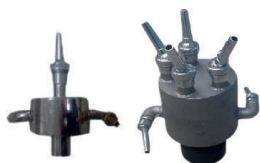
	Login	Code	Unit Price Euro
30-10 T	1"	FSUC30-10T	110.00
45-10 T	1"	FSUC45-10T	120.00
60-10 T	1"	FSUC60-10T	135.00
110-10 T	1"	FSUC110-10T	150.00

### Volcano Nozzle

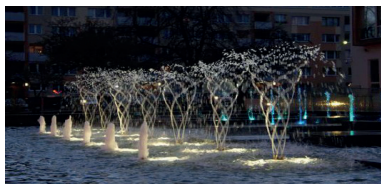


	Login	Code	Unit Price Euro
Rice	1"	VF1P	180.00
Rice	1"	VF1	350.00

### Rotary Type Nozzle (Stainless Steel)



	Login	Code	Unit Price Euro
One-armed	1 1/2"	FDÖN1	160.00
5 arms	1 1/2"	FDÖN4	240.00
6 arms	1 1/2"	FDÖN6	260.00



# EQUIPMENT FOR ORNAMENTAL FOUNTAINS



## PHOSPAT® CARTRIDGE FILTERS

### PHOSPAT® CIO cartridge filter (reduces free chlorine in water)

PHOSPAT® CIO reduces free chlorine in water. It reduces free chlorine in standard pools. Suitable for natural swimming pools, ponds and recirculation wells. Flow rate up to 1,100 l/h. Particle dispersion in layers is ensured. More units can be combined to supply larger water volumes. Two 3/4 inch connections, maximum operating pressure is 4 bar.

#### Filter Design1

PHOSPAT® CIO cartridges contain activated carbon, and the size design of PHOSPAT® CIO is engineered for quick and safe release from chlorinated water.

#### Assembly

Connect one end of the cartridge to your house's water line (with a flexible hose), and connect the other end to the section that carries water back to the pool.

#### Recommendation

PHOSPAT® CIO can be connected to your house or garden water line, so you can remove free chlorine directly from your filling or supply water.

	Code	Unit Price Euro
PHOSPAT® CIO	<b>MBCIO</b>	<b>650.00</b>

### PHOSPAT® cartridge filters (prevent the formation of phosphate in water)



It reduces phosphate in water and supports biofilters or sand filters. Suitable for pools, ponds, fountains, and circulation wells. Adsorption capacity of approximately 90,000 mg PO43-/cartridge. Several PHOSPAT cartridges can be added for large volumes of water. Two 1" connections, maximum operating pressure 4 bar.

#### Filter Design1

The granules used are specifically designed for phosphate binding. They consist of a three-layered bed. A phoslammin layer is located between the two outer layers. These layers also ensure a smooth flow. Due to its unique composition, the phosphate binds tightly in a short time.

#### Assembly

Connect one end of the pipe to the flow section of pre-filtered recirculating water (flow rate up to 1100 l/h) and connect the other end of the pipe to the pipe supplying the water reservoir.

#### Recommendation

Because large impurities can clog PHOSPAT® 81, the water must be pre-filtered and cleaned. This ensures the effective operation of PHOSPAT® 81. You can pump the water coming out of the filter into PHOSPAT® 81 using a suitable pump.



	Code	Unit Price Euro
PHOSPAT® 1 (1,100 lt/h)	<b>MB576</b>	<b>2,000.00</b>
PHOSPAT® 3 (3,300 lt/h)	<b>MB577</b>	<b>4,700.00</b>
PHOSPAT® 10-15 (6,000 lt/h)	<b>MB578</b>	<b>13,400.00</b>

## EQUIPMENT FOR ORNAMENTAL FOUNTAINS

Messner  
MOVES WATER...



### MESSNER DECORATIVE POND EQUIPMENT

#### pond pump

Flow rate control valve with height control, ideal for use in ornamental ponds, includes 3 nozzles (bell, volcano, ring jet), 7.5 m cable. It has a fine foam filter to protect the nozzles from dirt. Operates on 12V - 50Hz power supply.



	Code	Unit Price Euro
M 800 - 12V - h <sub>max</sub> : 1.3 m, 14 W	186/001390	220.00
M 1200 - 12V - h <sub>max</sub> : 1.8 m, 20 W	186/001391	240.00
M 1600 - 12V - h <sub>max</sub> : 2.2 m, 25 W	186/001392	250.00

#### eco-X2 pond pump1

Second generation energy-efficient single-phase pond pump with improved suction/discharge flow rates. Includes 10m cable. Comes with 230V/50Hz connection adapters; inlet and outlet connections are externally threaded. Nozzles are not included.



	Code	Unit Price Euro
eco-X2 4500	156/005000	650.00
eco-X2 7500	156/005001	950.00
eco-X2 10000	156/005002	1,030.00
eco-X2 13000	156/005003	1,210.00
eco-X2 16000	156/005004	1,450.00

Technical Specifications	4500	7500	10000	13000	16000
Flow	4.9 m <sup>3</sup> /h	7.3 m <sup>3</sup> /h	11 m <sup>3</sup> /h	12.6 m <sup>3</sup> /h	15.4 m <sup>3</sup> /h
Strength	48 W	75 W	110 W	140 W	190 W
Head pressure	3.1 m	4.0 m	5.4 m	5.5 m	5.8 m
Protection class 1	IP 68	IP 68	IP 68	IP 68	IP 68
Login - Exit	1 ¼"	1 ¼"	1 ½"	1 ½"	1 ½"
Maximum temperature	35 pC	35 pC	35 pC	35 pC	35 pC

# EQUIPMENT FOR ORNAMENTAL FOUNTAINS



top press



side press

2 different pressing direction options



Stronger circulation

## MESSNER DECORATIVE POND EQUIPMENT

### eco-X2 plus pond pump1

Second generation energy-efficient single-phase pond pump with improved suction/discharge flow rates. It has a 10 meter cable. Includes 230V/50Hz connection adapters; inlet and outlet connections are external.

	Code	Unit Price Euro
eco-X2 plus 10000	156/005006	900.00
eco-X2 plus 15000	156/005007	1300.00

Technical Specifications	1000	1500
Flow	9.9 m <sup>3</sup> /h	14.7 m <sup>3</sup> /h
Strength	60 W	105 W
Head pressure	2.40 m	3.20 m
Protection class 1	IP 68	IP 68
C1k1_	1½=	1½=
Maximum temperature	35 pC	35 pC

### power-X2 pond pump1

X-Design high-performance pump for high-pressure clear water applications. Single-phase, 230V / 50Hz, includes connection adapters, inlet and outlet connections are externally threaded. It has a 10 meter cable.



	Code	Unit Price Euro
power-X2 4000	156/005040	750.00
power-X2 6000	156/005041	800.00
power-X2 8000	156/005042	1,075.00
power-X2 10000	156/005043	1,180.00
power-X2 14000	156/005044	1,400.00

Technical Specifications	4000	6000	8000	10000	14000
Flow	4.1 m <sup>3</sup> /h	6.2 m <sup>3</sup> /h	8.1 m <sup>3</sup> /h	10.0 m <sup>3</sup> /h	14.0 m <sup>3</sup> /h
Strength	80 W	100 W	150 W	190 W	280 W
Head pressure	4.5 m	6.0 m	65 m	7.0 m	8.0 m
Dimensions (mm)	360 x 270 x 180	360 x 270 x 180	360 x 270 x 180	360 x 270 x 180	360 x 270 x 180
Login - Exit	1 ¼=	1 ¼=	1 ¼=	1 ¼=	1 ¼=
Diameters	Ø 32/40	Ø 32/40	Ø 32/40	Ø 32/40	Ø 32/40

# EQUIPMENT FOR ORNAMENTAL FOUNTAINS



In small ponds suitable for use 1m<sup>1</sup>

## MESSNER DECORATIVE POND EQUIPMENT

### System-X Pond Pump

High-performance pumps for small waterfalls, ornamental ponds, and filtration. Single-phase, 230V / 50Hz. Includes connection adapters and 3 sprinkler nozzles (bell, volcano, ring jet), with external inlet and outlet connections. 10 meters of cable.

	Code	Unit Price Euro
system-X 750	156/001375	200.00
System-X 1000	156/001376	230.00
system-X 1501	156/001377	275.00
System-X 3000	156/001379	350.00
System-X 4000	156/001380	435.00

Technical Specifications	750	1000	1501	3000	4000
Flow	0.8 m <sup>3</sup> /h	1.1 m <sup>3</sup> /h	1.5 m <sup>3</sup> /h	3.0 m <sup>3</sup> /h	4.0 m <sup>3</sup> /h
Strength	15 W	18 W	30 W	45 W	60 W
Head pressure	1.3 m	1.5 m	2.1 m	2.7 m	2.9 m
Dimensions (mm)	165 x 140 x 105	165 x 140 x 105	165 x 140 x 105	205 x 165 x 130	205 x 165 x 130
Login - Exit	½"	½"	½"	¾"	¾"
Diameters			Ø 25	Ø 32	Ø 32

### Transformers for Pond Pumps

Power supply 230 V / 50 Hz, IP-44 protection class.



	Code	Unit Price Euro
1W - 20W	186/002986	140.00
21 W - 50 W	186/002987	165.00

### Messner Equipment1

	Code	Unit Price Euro
1/2" Volcano jet nozzle head	106/000475	10.00
Connection adapter for F1skiyeler	104/000447	13.00
1" - 1/2" reduction for F1 skis.	104/000564	15.00
1/2" Calyx jet nozzle ba_11 1	106/000659	21.00
1/2" Bell Sprinkler Nozzle head 1	104/001520	32.00



# EQUIPMENT FOR ORNAMENTAL FOUNTAINS



Energy saving:  
patented fan



Play very quietly



0-100% adjustable  
3-way manifold

## MESSNER DECORATIVE POND EQUIPMENT

### eco-Tec2 pump

High-efficiency built-in pump suitable for use with filters in streams and similar applications. Comes with a special stand for mounting outside the pond. Not suitable for operation underwater. Includes a 10-meter cable.

	Code	Unit Price Euro
eco-Tec2 7500	156/005021	800.00
eco-Tec2 10000	156/005022	955.00
eco-Tec2 13000	156/005023	1.12500
eco-Tec2 16000	156/005024	1,240.00
eco-Tec2 20000	156/005025	1,800.00

Technical Specifications	7500	10000	13000	16000	20000
Flow	7.3 m <sup>3</sup> /h	11 m <sup>3</sup> /h	12.6 m <sup>3</sup> /h	15.4 m <sup>3</sup> /h	19.6 m <sup>3</sup> /h
Strength	75 W	110 W	140 W	190 W	205 W
Head pressure	4.0 m	5.4 m	5.5 m	5.8 m	5.5 m
Electrical connection	230 V / 50 Hz	230 V / 50 Hz	230 V / 50 Hz	230 V / 50 Hz	230 V / 50 Hz
Dimensions (mm)	230 x 145 x 192	230 x 145 x 192	230 x 145 x 192	230 x 145 x 192	230 x 145 x 192
Login - Exit	1 ¼"	1 ½"	1 ½"	1 ½"	2"
Diameters	Ø 32/40	Ø 40/50	Ø 40/50	Ø 40/50	Ø 50/63

### system-Tec built-in pump

Flexible design and particularly suitable for various natural composite applications. Compact dimensions, very quiet operation, and adjustable three-way manifold. It has a 10-meter cable.

	Code	Unit Price Euro
system-Tec 1000	156/005080	240.00
System-Tec 2000	156/005081	310.00
system-Tec 3000	156/005082	345.00

Technical Specifications	1000	2000	3000
Flow	1.2 m <sup>3</sup> /h	2.1 m <sup>3</sup> /h	3.2 m <sup>3</sup> /h
Strength	25 W	45 W	55 W
Head pressure	1.80 m	2.50 m	2.55 m
Electrical connection	230 V / 50 Hz	230 V / 50 Hz	230 V / 50 Hz
Dimensions (mm)	126 x 90 x 117	126 x 90 x 117	180 x 110 x 138
C1k1_	½"	½"	¾"
Diameters	Ø 20/25	Ø 20/25	Ø 20/25

# EQUIPMENT FOR ORNAMENTAL FOUNTAINS



## MESSNER DECORATIVE POND EQUIPMENT

### Pond Skimmers

Skimmers are the primary means of removing polluting particles from the water surface and circulating them before they settle to the bottom. A thin layer of water surface material passes through the skimmers via pump suction. Larger pollutants, such as leaves, are captured by the skimmer filter and must be cleaned periodically. Skimmers also contribute to preventing algae growth by maintaining a stable water temperature balance. In applications with waterfalls or similar flowing water, they act as pre-pump filters and can be cleaned independently of the pump.

#### Floating Type Tele Skimmer 200

It is made of black plastic material. The recommended effective flow rate is min. 50lt/min and max. 300lt/min. It can be used with pumps with flow rates of 3m<sup>3</sup>/h to 39m<sup>3</sup>/h. One unit should be used for a water surface up to 60m<sup>2</sup>. The required minimum water depth is 37.5cm and max. 90cm. It has a 20cm diameter and 1 1/2" external threaded connection. The skimmer includes a ø36cm stand, telescopic foot, ø40/50 hose nozzle, reduction socket and 2 reduction fittings.



	Code	Unit Price Euro
Tele Skimmer 200	168/002399	325.00

#### Floating Type Skimmer 140

Made of black plastic material. Recommended effective flow rate is min. 20lt/min and max. 50lt/min. Can be used with pumps with flow rates from 2m<sup>3</sup>/h to 6m<sup>3</sup>/h. One unit should be used for water surfaces up to 30m<sup>2</sup>. Minimum required water depth is 24cm. It has a 14cm diameter and 1" internal threaded connection. Skimmer and socket are included.



	Code	Unit Price Euro
Skimmer 140	168/002393	260.00

#### Floating Skimmer 140

Made of black plastic/stainless steel. Recommended effective flow rate is min. 20lt/min and max. 50lt/min. Can be used with pumps with flow rates from 2m<sup>3</sup>/h to 6m<sup>3</sup>/h. One unit should be used for water surfaces up to 40m<sup>2</sup>. Minimum required water depth is 30cm. It has a 14cm diameter and 1" internal threaded connection. The skimmer, 3 floats and ø19-20/25/32 hose nozzles are included.



	Code	Unit Price Euro
Floating Skimmer 140	168/002394	270.00

#### Floating Type Skimmer 200

Made of black plastic material. Recommended effective flow rate is min. 50lt/min and max. 300lt/min. Can be used with pumps with flow rates from 3m<sup>3</sup>/h to 39m<sup>3</sup>/h. One unit should be used for water surfaces up to 60m<sup>2</sup>. Minimum required water depth is 43cm. It has a 20cm diameter and a 1 1/4" external threaded connection. Skimmer, filter basket, stand and ø32 hose nozzles are included.



	Code	Unit Price Euro
Skimmer 200	168/002396	250.00

#### Floating Type Tube Skimmer 200

Made of black plastic material. Recommended effective flow rate is min. 50lt/min and max. 300lt/min. Can be used with pumps with flow rates from 3m<sup>3</sup>/h to 39m<sup>3</sup>/h. One unit should be used for water surfaces up to 60m<sup>2</sup>. Minimum required water depth is 25cm. It has a 20cm diameter and ø125 connection. Skimmer and filter basket are included.



	Code	Unit Price Euro
Tube Skimmer 200	168/002397	210.00

# EQUIPMENT FOR ORNAMENTAL FOUNTAINS



## MESSNER DECORATIVE POND EQUIPMENT

### WATERFALLS

Ready-to-use water overflow nozzles for waterfall applications. You can create a waterfall effect by mounting them side-by-side in a wide area, or a stepped appearance by mounting them one below the other. Mounting screws, fittings, and adhesive are included. Thanks to its robust body structure, it can support decorative materials such as stone.

Plastic waterfall	Code	Unit Price Euro
_elale 285 x 125 x 80	<b>162/002130</b>	<b>200.00</b>
_elale 380 x 200 x 190	<b>162/002121</b>	<b>330.00</b>

### Mini Versailles Water Show Set

The Mini Versailles water show set features four different automatic shows that alternate with each other. The show time can be manually adjusted by deactivating the automatic system. Nozzle water heights can be adjusted individually. Being compact, they require no complicated assembly. Simply place them in the water and start using them.

The Mini Versailles water show set includes a Power Tec2 6000 model pump with 100W power and 6200lt/h flow rate, 3 halogen lighting sets with 20W power, a transformer, and 3 sets of colored lenses. The maximum water height is 1.7m and the water diameter is 1.5m. The required water depth is 22-24cm. The required water basin diameter must be at least 2.5m.



	Code	Unit Price Euro
Mini Versailles Water Show Set	<b>160/001903</b>	<b>6,000.00</b>
Mini Versailles Floating Set	<b>160/001912</b>	<b>LFS</b>

### Halogen decorative pool lights

Halogen lamps are long-lasting, efficient, and offer high illumination power. They are more energy-efficient than traditional lamps. They are manufactured with heat-resistant Tempax glass and a reinforced plastic housing. While 50-watt lamps are only suitable for underwater use, 20-watt models can also be used in outdoor applications.

#### UWL 1220/5 halogen lamp 20W (with transformer)

Made of reinforced plastic housing and Tempax glass. 230V/50Hz. Can be used underwater and above water. Includes 7.5m cable, lenses in 4 different colors (red, yellow, green, blue), ground stake, stand and 20VA transformer.



	Code	Unit Price Euro
UWL 1220/5 halogen lamp 20W	<b>170/002896</b>	<b>150.00</b>

#### UWL 1250/5 halogen lamp 50W Clip-on (without transformer)

Made of reinforced plastic housing and Tempax glass. 230V/50Hz. Can be used underwater and above water. Includes 7.5m cable, lenses in 4 different colors (red, yellow, green, blue), and stand. Transformer not included.



	Code	Unit Price Euro
UWL 1220/5 halogen lamp 50W clip-on	<b>170/002882</b>	<b>95.00</b>

#### UWL 3-piece halogen lamp sets

Includes 3 lamps, power cable, stands, colored lenses and transformers.



	Code	Unit Price Euro
UWL 3x20W Set with 70VA transformer	<b>170/002915</b>	<b>330.00</b>

# EQUIPMENT FOR ORNAMENTAL FOUNTAINS



## MESSNER DECORATIVE POND EQUIPMENT

### F1skiyeleler

Plastic nozzles with 20 mm internal threads, suitable for use with Messner pond pumps. The recommended water flow height and diameter values for different pump types are shown in the table below.



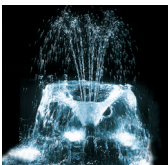
Volkan Fountain 2 s1ra11



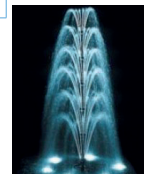
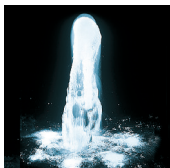
Pump type	Volkan Fountain 2 s1ra11		Volkan Fountain special		Halka Fountain	
	water diameter <sup>1</sup> cm	water level cm	water diameter <sup>1</sup> cm	water level cm	water diameter <sup>1</sup> cm	water level cm
system-X 750	Ø 35	75	Ø 30	55	Ø 100	70
System-X 1000	Ø 40	80	Ø 35	60	Ø 120	70
system-X 1500	Ø 60	130	Ø 70	105	Ø 180	120
System X 2500	Ø 100	190	Ø 80	145		
System X 3000	Ø 90	210	Ø 80	180		
System X 4000	Ø 100	230	Ø 100	190		



Pump type	Calyx Fountain Vario		Foam F1 ski	Bell Fountain	
	water diameter <sup>1</sup> cm	water level cm	water level cm	water diameter <sup>1</sup> cm	water level cm
System X-750	Ø 20	20			
System X-1000	Ø 20	20			
System X-1500	Ø 35	25		Ø 50	30
System X-2500	Ø 40	30	32	Ø 50	30
System X-3000	Ø 40	30	45	Ø 60	30
System X-4000	Ø 45	30	50	Ø 70	55
power X2/ power Tec2 6000			150		



Plastic sprinklers	Code	Unit Price Euro
Volkan f1skiye, 2 s1ra11	150/001060	30.00
Volkan f1skiye, special	150/001070	32.00
Volkan f1skiye, 3 s1ra11	150/001090	33.00
Finger nozzle 1/2"	150/001212	65.00
Ring fountain	150/001220	33.00
Ring fountain 2 rows	150/001230	33.00
Calyx f1skiye, Vario	150/001180	50.00
Foam sprayer	150/001170	43.00
Bell fountain	150/001240	51.00
Star Fountain	150/001291	35.00



Bell Fountain

Star Fountain

# EQUIPMENT FOR ORNAMENTAL FOUNTAINS



## MESSNER DECORATIVE POND EQUIPMENT

### Fontains

Suitable for use with Messner pond pumps, these nozzles are made of plastic and stainless steel, and feature 1" to 1 1/4" external threaded connections. The recommended water flow height and diameter values, varying according to different pump types, are shown in the table below.



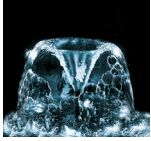
Foam Sprinkler 1"



Special Foam F1 ski 1"



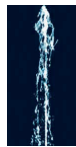
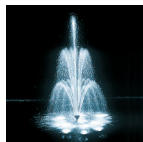
Volkan Fountain 1"



Calyx Fountain 1"



Water Column Sprinkler 1"



Geyser Fountain

Pump type	Foam F1skiye	Special Foam F.	Halka F1skiye	
	water level cm	water level cm	water diameter1 cm	water level cm
power-X2/power-Tec2 4000	22	30	Ø 70	45
power-X2/power-Tec2 6000	50	70	Ø 80	45
power-X2/power-Tec2 8000	70	85	Ø 90	45
power-X2/power-Tec2 10000	95	120	Ø 105	45
power-X2/power-Tec2 14000	110	135	Ø 110	45

Pump type	Bell F1skiye 1"-E		Column of Water F1skiye 1=-E
	water diameter1 cm	water level cm	water level cm
power-X2/power-Tec2 4000	Ø 90	45	65
power-X2/power-Tec2 6000	Ø 110	45	140
power-X2/power-Tec2 8000	Ø 110	45	190
power-X2/power-Tec2 10000	Ø 115	45	250
power-X2/power-Tec2 14000	Ø 125	45	300

Plastic/stainless steel sprinklers	Code	Unit Price Euro
Foam sprayer 1"-E	152/001151	85.00
Foam sprayer (stainless steel) 1"-E	152/001150	200.00
Special foam sprayer 1"-E	152/001152	190.00
Calyx f1skiye 1"-E	152/001161	110.00
Calyx f1skiye (stainless steel) 1"-E	152/001160	300.00
Bell fountain 1"-E	152/001041	250.00
Water Column Sprinkler (Stainless Steel) 1"-E	152/001123	250.00
Geyser fountain nickel plated.	152/001190	260.00

# EQUIPMENT FOR ORNAMENTAL FOUNTAINS



## MESSNER DECORATIVE POND EQUIPMENT

### Pond UV devices<sup>1</sup>

UV-C lamps have a limited lifespan and should be replaced at the end of the season. Cleaning the quartz glass tube and replacing the UV-C lamp can be done without tools.

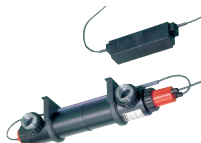
#### UV-C 8 watt



It has a capacity of 8 Watts. Its dimensions are 400 x Ø 85 mm, and it has a 1" internal threaded connection inlet. The recommended effective flow rate is min. 500lt/h and max. 1500lt/h. It is ideal for ponds up to 4 m<sup>3</sup>.

	Code	Unit Price Euro
UV-C 8 Watt	162/002480	310.00

#### UV-C 25 watt



It has a capacity of 25 Watts. Its dimensions are 550 x Ø 85 mm, and it has a 1" + 1/4" internal threaded connection inlet. The recommended effective flow rate is min. 500 lt/h and max. 4000 lt/h. It is ideal for ponds up to 12.5 m<sup>3</sup>.

	Code	Unit Price Euro
UV-C 25 Watt	162/002482	430.00

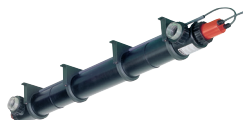
#### UV-C 30 watt



It has a capacity of 30 Watts. Its dimensions are 1000 x Ø 85 mm, and it has a 1" + 1/4" internal threaded connection inlet. The recommended effective flow rate is min. 500 lt/h and max. 6000 lt/h. 15m<sup>3</sup> ideal for ponds up to [size].

	Code	Unit Price Euro
UV-C 30 Watt	162/002483	510.00

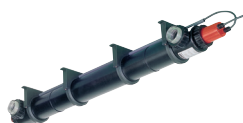
#### UV-C 55 watt



It has a capacity of 55 Watts. Its dimensions are 1000 x Ø 85 mm, and it has a 1" + 1/4" internal threaded connection inlet. The recommended effective flow rate is min. 500 lt/h and max. 8000 lt/h. It is ideal for ponds up to 27.5 m<sup>3</sup>.

	Code	Unit Price Euro
UV-C 55 Watt	162/002484	630.00

#### UV-C 75 watt



It has a capacity of 75 Watts. Its dimensions are 1000 x Ø 85 mm, and it has a 1" + 1/4" internal threaded connection inlet. The recommended effective flow rate is min. 500 lt/h and max. 12000 lt/h. It is ideal for ponds up to 37.5 m<sup>3</sup>.

	Code	Unit Price Euro
UV-C 75 Watt	162/002487	720.00

# EQUIPMENT FOR ORNAMENTAL FOUNTAINS

## QUICK VAC ELECTRIC LOW DEPTH DECORATIVE POND CLEANERS

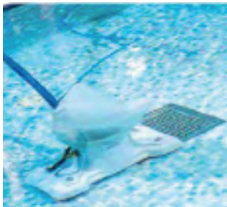
Quick Vac Vacuum Cleaners (can operate in depths of 15-40 cm)

These pool cleaners are lightweight, portable, and battery-operated, with 360° rotation and an independent filter. They can operate in ponds and ornamental pools at depths of 15 to 40 cm, cleaning accumulated leaves and sand without consuming excessive energy. They feature 360° rotating wheels and come with a transport trolley.

Telescopic handle, battery, cable and power supply are not included.

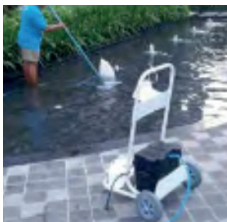


Technical Data	HVAC100	HVAC200	HVACXL
Model	Quick Vack 100	Quick Vac 200	Quick Vac XL
Broom Width (cm)	40	40	110
EMI Power (m³/h)	40	40	40
Ta_1ma Arabas1	Aluminum	Aluminum	Aluminum
Cable Length (m)	14	14	21
Weight in water (kg)	5	5	7
Pump (W)	250	250	250
Filtration (micron)	75, 100, 250, 1000	75, 100, 250, 1000	75, 100, 250, 1000
Filtration Capacity (kg)	2	4	6
Playback Time (hours)	3	3	3
Power Supply (V)	12	12	12
Minimum Water Depth (cm)	15 cm	40 cm	40 cm



Quick Vac 100 Cleaning Robot for Decorative Ponds (h=15 cm water depth) (12 Volt)

	Code	Unit Price Euro
Quick Vac 100	HVAC100	LFS



Quick Vac 200 Cleaning Robot for Decorative Ponds (h=40 cm water depth) (12 Volt)

	Code	Unit Price Euro
Quick Vac 200	HVAC200	LFS

Quick Vac XL Cleaning Robot for Decorative Ponds (h=40 cm water depth) (12 Volt)

	Code	Unit Price Euro
Quick Vac XL	HVACXL	LFS

**IN POOLS AND PONDS  
IDEAL CLEANING**



Quick Vac 100



Quick Vac 200



Quick Vac XL

# POND



## AMORPHOUS WATER GARDENS

PE Product, Garden Decorative Ponds



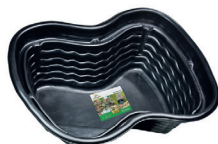
120 Liter Volume	Code	Unit Price Euro
120 x 90 x 40 cm	<b>B110-00</b>	<b>€270.00</b>



500 Liter Volume	Code	Unit Price Euro
157 x 125 x 54 cm	<b>B501-00</b>	<b>310.00 ~</b>



900 Liter Volume	Code	Unit Price Euro
150 x 150 x 45 cm, Square	<b>B084-00</b>	<b>660.00</b>



1000 Liter Volume	Code	Unit Price Euro
224 x 150 x 70 cm	<b>B1001-00</b>	<b>720.00 ~</b>

## "Perfect" Pond Sweeper

"Continuously functional with internal drain pump1"

50L/min 3 0.18 bar

"Accessories: 4 pipes, 4 nozzles, 7.5 m vacuum hose, 5 m discharge hose, large wheels, easy-grip handle, 10 m power cable, accessory storage in the rear compartment."



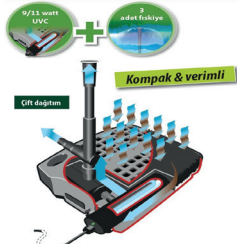
	F650P-00	SU:1
Pond area 1	10 m <sup>2</sup> greater than for ponds	
Tank capacity	45 liters	
maximum flow rate	max. 4000 l/h	
Strength	2200 - 2400 W	
L x W x H	50 x 43 x 105 cm	
EmI_depth i	max. 180 cm	
Height	max. 7 m	
Unit Price Euro	<b>1,500 €</b>	

# POND FILTERS



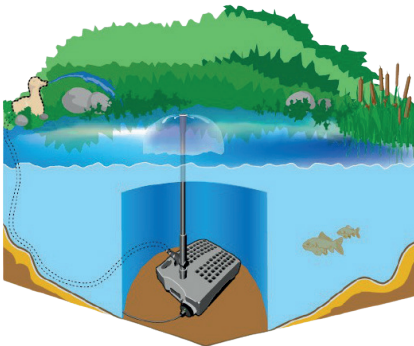
## FOR PONDS PUMPED UNDERWATER FILTERS

### All-in-One Underwater Filter



The smartline pool filter with integrated UVC (9 Watt) is ideal for pools up to 5,000 liters. The mechanical filtration process with a large filtration surface guarantees long cleaning intervals. All filter components are virtually invisible at the bottom of the pool. The pump and UVC disinfection device, which have separate power supplies, can be operated at different intervals if desired. It also features an adjustable spray nozzle connection and a telescopic extension with adjustable tilt.

- Mechanical filtration with a large filtration surface.
- Ideal for ponds up to 5,000 liters in volume.
- All filter equipment is virtually invisible on the pool floor.
- The spray angle is adjustable.
- UVC function check
- Includes adjustable sprinkler connection and 3 sprinklers.
- Including Filtran Media
- Smart plug compatible



Bell ø 60 cm



Filter Media 1



UVC i\_levi control



Cascade ø 60 cm



Adjustable pond connection1s1



Cascade ø 140 cm



€ im opportunity1



	FA 1000UV-00	FA 2000UV-00
Bal1ks1z pond volume		
Bal1kl1 volume	<b>f 1500 L</b>	<b>f 2500 L</b>
Replacement lamp	ZF409-00	ZF411-00
Pump capacity	1000 l/h / 24 W	2000 l/h / 34 W
Head pressure	1.20 m	1.80 m
Watt	33W pump and 9W UVC	45W pump and 11W UVC
Cable length	10 meters	10 meters
L x W x H	32 x 25 x 14 cm	38 x 27 x 13 cm
Unit Price Euro	<b>350 ~</b>	<b>500 ~</b>

# POND FILTERS



## PONDS PRESSURE FILTERS

### Pressure Filter Set HLF 4000-00

- Filters with mechanical filtration
- Ideal for ponds up to 4,000 liters in volume.
- All filter equipment is virtually invisible on the pool floor.
- Pull-mechanism quick cleaning system and integrated waste disposal system.
- Backwash and waste outlet (third hose connection)
- Biological filter, flow-controlled pump, UV-C, hose and nozzle. lan1 complete with accessories!



"Easy clean" cleaning system



"Easy clean" h1z1 cleaning system

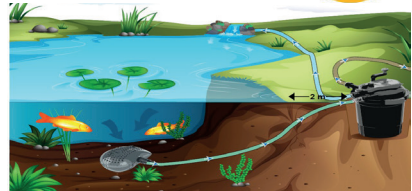
HLF 4000-00	
Bal1ks1z pond volume	
Bal1k11 volume	<b>f 2000 L</b>
UV lamp	7 W
Replacement lamp	ZF407-00
Pump C1k1_1	2200 l/h / 25W
L x W x H	31 x 31 x 41 cm
Hose	3 meters 3/4" (19 mm)
Cable length	5 meters
Unit Price Euro	<b>700 ~</b>

### Pressure Filter Set FPU 10000-00 / 20000-00

- Filters with mechanical filtration
- Ideal for ponds up to 10,000 liters in volume.
- All filter equipment is virtually invisible on the pool floor.
- Pull-mechanism quick cleaning system and integrated waste disposal system.
- Complete with biological filter, flow-controlled pump, UV-C, hose and connection accessories.



"Easy clean" cleaning system



"Easy clean" fast cleaning system



Pump flow rate control system

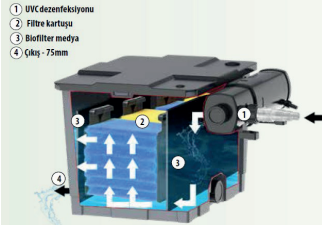
	FPU 10000-00	FPU 20000-00
Bal1ks1z pond volume		
Bal1k11 volume	<b>f 5.000 L</b>	<b>f 10,000 L</b>
Arm pond	<b>f 2.500 L</b>	<b>f 5.000 L</b>
UV lamp1	11 W	24W
Replacement lamp	ZF411-00	ZF424-00
Pump capacity	3.3 m3/h / 40 W	4.9 m3/h / 40 W
Hose connection1s1	4 meters 25/32/38 mm	4 meters 19/25/32/38mm
Cable	5 meters	
L x W x H	35 x 28 x 55 cm	38 x 38 x 73 cm
Unit Price Euro	<b>1,100 ~</b>	<b>1,230</b>

Yeni

# POND FILTERS



## FOR PONDS ATTRACTIVE FLOW\_ FILTERING PRINCIPLE



1) The integrated UVC disinfection device is used to gather floating algae and kill microbes, so they are collected in the filter medium.

2) Nitritation (conversion of ammonia/ammonium to nitrite) is carried out by Nitrosomonas bacteria within the sponge. Water must pass over the filter sponges before reaching deeper sections. Nitrosomonas bacteria form in these sponges due to nitrite.

3) By using biospheres in the first and last sections of the filter, habitats for more Nitrosomonas and Nitrobacter bacteria are created. Additionally, hazardous nitrite is converted into nitrate.

### Attractive Flux Filter FPU10100-00



- Integrated UVC disinfection device to kill microbes and clumping algae.
- Filter sponge for mechanical filtration.
- Large surface area biospheres for forming active biofilm.
- Filter contamination level indicator, water temperature indicator



"Press & Clean" cleaning system



It can be changed. cartridges



Filter Indicator Glass1



Water Temperature Indicator

	FPU10100-00	SU-4
Pond volume without fish		
Fish volume	<b>f 5000 L</b>	
Arm pond	<b>f 2500 L</b>	
UV lamp	9 W	
Replacement lamp	ZF409-00	
Pump capacity	3300 l/h / 40 W	
L x W x H	340 x 27 x 40 cm	
Unit Price Euro	<b>750</b>	

The 3-chamber filter includes: filter media (biotopes + filter sponge), flow-controlled pond pump, integrated UVC device, 5 meters of 25 mm connection hose, and connection equipment.

### Multi-cell Filter for Ponds FPU24000-00 / FPU40000-00

- Complete Professional Pond Filter Set with pump and UVC disinfection.
- The powerful ECO-pump allows passage of particles up to 10 mm in size.
- Easy to use - Ideal for large fish ponds

Yeni



Water Temperature Indicator



Filter Indicator Glass1

Code	FPU24000-00	FPU40000-00
Pond volume without fish		
Fish volume	<b>f 12000 L</b>	<b>f 20000 L</b>
Arm pond	<b>f 6000 L</b>	<b>f 10000 L</b>
UV lamp	24W	36 W
Replacement lamp	ZF424-00	ZF436-00
Pump capacity	4800 l/h / 23 W	10000 l/h / 95 W
L x W x H	80 x 46 x 46 cm	136 x 52 x 40 cm
Unit Price Euro	<b>2,000 €</b>	<b>2,250</b>
Products included in the set:	<ul style="list-style-type: none"> <li>• Pump P5100-00E</li> <li>• 24W UVC</li> <li>• Filter sponge &amp; Bio balls</li> <li>• 5 m Hose (32mm)</li> <li>• Connection accessories</li> </ul>	<ul style="list-style-type: none"> <li>• Pump HFP10000</li> <li>• 36W UVC</li> <li>• Filter sponge &amp; Bio balls</li> <li>• 5 m Hose (38 mm)</li> <li>• Connection accessories</li> </ul>

# POND FILTERS



## PROFESSIONAL ATTRACTIVE FLOW FILTER SYSTEM FOR PONDS



APOLLO L PRO  
F 321-00 (Vortex bölümü + 2 bölüm)



### Apollo Pro Attractive Flow FiltersPREMIUM

- Pro Pond Filter with sophisticated equipment - Material: Reinforced polyester
- Universal hose connectors and high-quality drain valve.

#### Filter Section

- A)Vortex creation section
- B)Mechanical filtration with Sansai Brushes
- C)Biological filtration with Japanese mats.
- D)Simple waste disposal
- TO)Biological filtration with special substrate (F322/F323)

Code	APOLLO XL PRO F 322-00	APOLLO XXL PRO F 323-00
Pond volume without fish	80 m <sup>3</sup>	120 m <sup>3</sup>
Fish volume	f 40,000 L	f 60,000 L
Arm pond	f 20,000 L	f 30,000 L
Filter Sections	Vortex + 3 episodes	Vortex + 3 episodes
Recommended pump	P8100E-00 (8.1 m <sup>3</sup> /h)	P10100E-00 (10 m <sup>3</sup> /h)
Recommended UVC	F455E-00 (55 W)	F455E-00 (55 W)
L x W x H	176 x 46 x 67 cm	257 x 81 x 80 cm
Unit price EURO	€4,700	6,900 -

	Sansai Specialty Brushes	Japanese Filtration Mat1	Starting Bacteria	Phosphate Ba lay1c1	Special Filter Substrate1	Zeolite 20 kg
= Included in the set						
F322-00	9 x	4 x	1000 g	1000 ml	20 kg	-
F323-00	12 x	9 x	1000 g	1000 ml	20 kg	20 kg

# POND ACCESSORIES



## POND ACCESSORIES

### Pond Ventilation

- Aeration and circulation for optimum water balance.
- Includes back cover, 10 mt silicone air hose and air ta\_1.
- 3 meter power cable



	TZ615-00
Volume	12,000 L
Flow Rate (C1k1)	720 l/h
Watt	8 W
Hose	4 x 10 m
L x W x H	21 x 15 x 9 cm
Unit Price Euro	200 ~

## SURFACE SKIMMERS

### Pond skimmer

#### RO Surface Skimmer

It can be aligned in the most optimal way.

Secure positioning on the pool bottom (The bottom can be fixed with stones) Minimum pond depth: 60 cm

Maximum pond depth: infinity

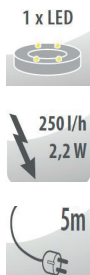


	F551-00
Ball1ks1z	40 m <sup>2</sup> water surface up to area1
Recommended pump	6,000 - 20,000 l/h
Included	at 15 cm intervals 3 cm extension
L x W x H	42 x 24 x 15 cm
Unit Price Euro	250 ~

## DECORATIF MINI ORNAMENTAL FOUNTAINS

### Mini Garden Decorative Ponds1 (LED Illuminated1)

Comes with a 5 m long cable.



50 x 47 x 30 cm

016634-09
Gray LED
Polystone
500.00 ~

### Mini Hemisphere Decorative Ponds (LED Illuminated)

Comes with a 5 m long cable.



50 x 47 x 30 cm

016602-17
Earth Tone Hemisphere LED
Polystone
€490.00



POND MAINTENANCE PRODUCTS

TZ751-00

1 Ideal Pond Maintenance Cure



Granular mix 1\_1m1 is used for initial filling, water changes, annual season start, algae control, or when there is a noticeable deficiency in pond life.

"It transforms tap water into pond water." It contains various minerals.  
 "Increases carbonate and total hardness" "Stabilizes pH value"  
 " 12 msuitable for capacity

TZ752-00

Pond Algae Preventer



Granular mixture for combating 1-strand algae. It starts to show its effect immediately upon contact with scattered algae. The algae loosen and die.

It also breaks down leaves and mud that accumulate at the bottom of the pool more quickly.  
 "Prevents algae growth."  
 "Its effect is visible upon first contact." It is in granular form, 12 m.suitable for capacity

TZ754-00

PLUS Pond Water Clarifier



S1v1 concentrate causes dirt particles to clump together and stick to each other within a few hours, making them easy to clean with a skimmer or bottom suction cup.

Crystal clear pond water  
 "It isolates phosphate and helps prevent new turbidity."  
 "Use of snow for algae is not recommended"  
 12 msuitable for capacity

TZ791-00

H1z1-Test-Seti 68s1 in 1



6 basic value measurements:  
 pH, GH, KH, CL, NO2, NO3

It provides information about your water's parameters in under a minute. It shows whether the parameters are correct or abnormal. The box contains 50 test strips.



F-PLUS

F Plus All-in-One Filter Bacteria



F+ contains 10 individually packaged sachets, enough for one pool season. It is very easy to use. One sachet is poured directly into the filter every 3 weeks.

F+ accelerates the growth of bacterial cultures in the pool filter.  
 The F+ filter improves and enhances performance.  
 F+ increases water hardness and stabilizes pH. F+ is ideal for use in all pool filters for pool sizes from 2,000 to 40,000 liters.  
 " 3 x starting bacteria " 7 x pond water conditioner

TZ753-00

Pond Water Clarifier



A liquid concentrate to kill almost all floating algae and thus prevent green, cloudy pond water.

The floating algae gradually die, and the water becomes clearer and clearer.  
 "Green clarifies the color of the water."  
 "It is easy to use, 12 m"suitable for capacity. "Does not contain copper additives."

TZ755-00

Filter Starter Bacteria



A liquid concentrate used to enrich water with particularly important and beneficial bacterial species, thereby developing the necessary pond biology.

"It eliminates bacteria in filters." "It increases the efficiency of filters."  
 "It turns tap water into pond water." "It prevents bad odors."  
 "Breaks up the mud at the bottom of the pond" Long-term effect  
 " 12 msuitable for capacity

F100-00

Zeolite

"Ideal as a filtration material"  
 "Contains no copper additives"  
 "Harmless to excessive use"  
 "Renew at the end of the season" For fish, completely  
 "10 m"suitable for capacity

Code	F-PLUS	TZ751-00	TZ752-00	TZ753-00	TZ754-00	TZ755-00	TZ791-00	F100-00
Amount	10_ase	1000 g	1000 g	1000 ml	600 g	1000 ml	50 sticks	10 kg
Unit Price EURO	55	55	65	45	50	50	51	55



READY-MADE SWIMMING POOLS

Madagascar

"The pool depth is 150 cm. The pool walls are made of galvanized steel panels.  
"Blue PVC Liner inner surface coating 1 75/100, Sand filter (10m) The pump, skimmer, connecting pipes, fittings and filter media are shipped together with a stainless steel ladder (4 steps).



Dimensions	Code	Unit Price Euro
Ø420 cm	KPE4259	4,500.00
500 x 300 cm	KPEOV5059	6,000.00
600 x 320 cm	KPEOV6059	6,100.00
700 x 320 cm	KPEOV7059	6,300.00
800 x 400 cm	KPEOV8059	6,800.00



Sumatra

"The pool depth is 120 cm. It is manufactured from 60/100 galvanized steel panels.  
"Blue PVC Liner inner surface coating 1 60/100, Sand filter and pump 1, Skimmer, Connection pipes 1, Fittings and filter media, Stainless steel ladder (3 steps) are shipped together.



Dimensions	Code	Unit Price Euro
Ø350 cm	KPE3527	3,500.00
Ø420 cm	KPE4227	3,700.00
500 x 300 cm	KPEOV5027	4,200.00
600 x 320 cm	KPEOV6027	4,400.00
700 x 320 cm	KPEOV7027	4,600.00
800 x 400 cm	KPEOV8027	5,400.00



## READY-MADE SWIMMING POOLS



### READY-MADE SWIMMING POOLS

#### Mariposa Pool

"Polyester and polymer mixed liner inner coating with high resistance and durability properties."

Italian design, high-quality and durable sun loungers.

Pool area 1: 2.30 m<sup>2</sup>

Pool depth: 50 cm

\*The warranty period is 5 years for the liner and 2 years for other equipment.\*



Dimensions	Code	Unit Price Euro
D1 dimensions: 282 x 219 x 60 cm (W x L x H) 1ç dimensions: 138 x 165 cm	PBT200	4,725.00

#### Liner

Reinforced liner:  
0.85 mm - White

#### Body

Electrostatic  
painted aluminum  
construction

#### Filtration

60W 12V pump-operated internal  
cartridge filter.

Flow rate = 3 m<sup>3</sup>/h



#### LED Lighting

0.3 Watt projector

## 1\_ME SPAS

#### Silver Spa

A spa made of PVC liner, with a capacity of 5-6 people.



Features	
Code	FLDSL155C
Water Volume	850 L
D1_ Dimensions	185 cm x 185 cm x 70 cm
1. Dimensions	155 cm x 155 cm x 70 cm
Air Nozzles1	130 pieces
A 1r1k (bo_)	30 kg
Maximum temperature	42 °C
Suggested ambient temperature 1	5°C and above
Unit Price (Euro)	1,650.00

# PVC FITTINGS

## AQUARAMBLA RIGID PVC STABILIZER



### Aquarambla U-PVC Adhesive

Aquarambla imported from Spain, in plastic packaging & with application brush.

	Code	Unit Price Euro
1 liter package	73367	20.00

## ECONOMICAL PVC VALVES

### U-PVC Economical PVC Ball Water Valves1 (1THAL)



	Code	Unit Price Euro
Ø 63 mm	BVD16063	14.00

### U-PVC Aqualink PVC Ball Water Valves1 (1THAL)



	Code	Unit Price Euro
Ø 20 mm	PV2001	7.10
Ø 25 mm	PV2002	7.70
Ø 32 mm	PV2003	9.40
Ø 40 mm	PV2004	12.10
Ø 50 mm	PV2005	14.90
Ø 63 mm	PV2006	21.05
Ø 75 mm	PV2007	58.00
Ø 90 mm	PV2008	82.00
Ø 110 mm	PV2010R	94.00

### (Domestic) U-PVC Pipe



10 Bar	Code	Unit Price Euro
Ø 40mm	-	LFS
Ø 50mm	-	LFS
Ø 63 mm	-	LFS
Ø 75 mm	-	LFS
Ø 90 mm	-	LFS
Ø 110 mm	-	LFS
Ø 125 mm	-	LFS
Ø 140 mm	-	LFS
Ø 160 mm	-	LFS
Ø 200 mm	-	LFS
Ø 225 mm	-	LFS
Ø 250 mm	-	LFS
Ø 280 mm	-	LFS
Ø 315 mm	-	LFS
Ø 355 mm	-	LFS
Ø 400 mm	-	LFS
Ø 450 mm	-	LFS
Ø 500 mm	-	LFS

# PVC FITTINGS



## ECONOMICAL PVC FITTINGS

### PVC 90<sup>he</sup>Elbow

Yap1_t1rma PN16	Code	Unit Price Euro
Ø 50 mm	PV01050	1.30
Ø 63 mm	PV01063	2.25
Ø 75 mm	PV01075	4.50
Ø 90 mm	PV01090	6.45
Ø 110 mm	PV01110	12.40

### PVC 45<sup>he</sup>Elbow



Yap1_t1rma PN16	Code	Unit Price Euro
Ø 50 mm	PV02050	1.40
Ø 63 mm	PV02063	2.30
Ø 75 mm	PV02075	5.25
Ø 90 mm	PV02090	7.50
Ø 110 mm	PV02110	11.40

### PVC Tee 90<sup>he</sup>



Yap1_t1rma PN16	Code	Unit Price Euro
Ø 50 mm	PV03050	1.95
Ø 63 mm	PV03063	4.50
Ø 75 mm	PV03075	6.20
Ø 90 mm	PV03090	10.40
Ø 110 mm	PV03110	16.40

### PVC Man\_on



Yap1_t1rma PN16	Code	Unit Price Euro
Ø 50 mm	PV05050	1.10
Ø 63 mm	PV05063	1.70
Ø 75 mm	PV05075	3.70
Ø 90 mm	PV05090	4.80
Ø 110 mm	PV05110	7.80



## ECONOMICAL PVC FITTINGS

### PVC Reduction



Adhesive PN16	Code	Unit Price Euro
Ø 63 mm x 50 mm	PV06063	0.95
Ø 75 mm x 63 mm	PV06075	1.40
Ø 90 mm x 75 mm	PV06090	2.35
Ø 110 mm x 90 mm	PV06110	4.50

### PVC Blind Plug



Adhesive	Code	Unit Price Euro
Ø 50 mm	PV07050	1.30
Ø 63 mm	PV07063	1.65
Ø 75 mm	PV07075	3.25
Ø 90 mm	PV07090	5.80
Ø 110 mm	PV07110	10.05

### PVC Adapter



Bonding & BSP External Thread PN16	Code	Unit Price Euro
Ø 50 mm x 1½"	PV17450	1.40
Ø 63 mm x 2"	PV17463	1.90

### PVC Fitting



Double-sided adhesive PN16	Code	Unit Price Euro
Ø 50 mm	PV50050	5.50
Ø 63 mm	PV50063	6.40

### PVC Fitting



Bonding & BSP External Thread PN16	Code	Unit Price Euro
Ø 50 mm x 1½"	PV51450	5.50
Ø 63 mm x 2"	PV51463	6.50

### Arus U-PVC Clamp



	Code	Unit Price Euro
Ø 32 mm	ARUS008-32	0.17
Ø 40 mm	ARUS008-40	0.24
Ø 50 mm	ARUS008-50	0.32
Ø 63 mm	ARUS008-63	0.62

**FLUIDRA TR WATER AND POOL EQUIPMENT INDUSTRY AND TRADE INC..\_.**

**Birlik Organized Industrial Zone, 1st Street, No: 3, 34953 Tuzla/Istanbul**

**Tel:+90 216 442 19 06 -1907 e-**

**mail: [info@fluidra.com.tr](mailto:info@fluidra.com.tr)**

**[www.fluidratr.com](http://www.fluidratr.com)**

**[www.fluidrakatalog.com](http://www.fluidrakatalog.com)**

**[www.fluidra.com.tr](http://www.fluidra.com.tr)**