

POOL EQUIPMENT

ECONOMIC ABS POOL NOZZLES

Economical ABS nozzles for reinforced concrete pools.



| Pool side feed nozzle | Code | Unit Price Euro |
|------------------------|----------|-----------------|
| Construction type, Ø50 | 00298-NN | 3.00 |
| Construction type, Ø63 | 00298-N | 3.00 |



| Pool vacuum nozzle | Code | Unit Price Euro |
|------------------------|----------|-----------------|
| Construction type, Ø50 | 00300-YY | 3.00 |
| Construction type, Ø63 | 00300-N | 3.00 |



| Pool bottom feed nozzle | Code | Unit Price Euro |
|---|----------|-----------------|
| Construction type, Ø50, flow adjustable | 35419-YY | 3.00 |
| Construction type, Ø63, flow adjustable | 35419-N | 3.00 |

Economical ABS nozzles for liner pools.



Side Feeding nozzle

Vacuum nozzle

| | Code | Unit Price Euro |
|--------------------------------------|---------|-----------------|
| Ø63 side feed nozzle mounting type | 00330-Y | 13.00 |
| Ø63 vacuum nozzle mounting type | 00332-Y | 13.00 |
| Ø63 side feed nozzle, threaded type. | | 13.00 |

ECONOMIC POOL NOZZLES WITH STAINLESS STEEL COVERS

Economical stainless steel nozzles for reinforced concrete pools1

The body is made of ABS, and the front end is made of AISI-316 stainless steel. Includes frame.



| CONSTRUCTION TYPE | Code | Unit Price Euro |
|------------------------|---------|-----------------|
| Side feed nozzle Ø63 | 16325-Y | 48.00 |
| Vacuum nozzle Ø63 | 00317-Y | 48.00 |
| Bottom feed nozzle Ø63 | 15839-Y | 48.00 |

Economical stainless steel nozzles for liner pools1

The body is made of ABS, and the front end is made of AISI-316 stainless steel. Includes frame.



| CONSTRUCTION TYPE | Code | Unit Price Euro |
|----------------------|---------|-----------------|
| Side feed nozzle Ø63 | 16325-L | 60.00 |
| Vacuum nozzle Ø63 | 00317-L | 60.00 |

POOL EQUIPMENT

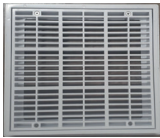
ECONOMIC ABS BOTTOM GRILLES

Economical ABS bottom grates for reinforced concrete pools.

Made of ABS.



| Round type | Code | Unit Price Euro |
|------------|---------|-----------------|
| Ø 24.5 cm | 00280-N | 8.00 |



| Square type | Code | Unit Price Euro |
|----------------|-----------|-----------------|
| 20 x 20 cm | 34330-Y | 11.00 |
| 26,5 x 26,5 cm | 34331-Y | 14.00 |
| 30 x 30 cm | 34331-Y30 | 18.00 |
| 41 x 41 cm | 34331-Y41 | 80.00 |

Economical ABS bottom strainer for swimming pools.

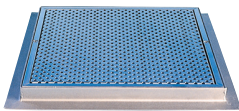
Made of ABS, the liner model is shipped with the gaskets.



| Bottom Strainer | Code | Unit Price Euro |
|---|---------|-----------------|
| 2" connection for Liner Pools | 00271-Y | 18.00 |
| 2" connection for Reinforced Concrete Pools | 00272-Y | 15.00 |

STAINLESS STEEL ECONOMICAL BOTTOM GRIDS

Stainless steel bottom grates for reinforced concrete pools.



| Square Bottom suction grille AISI-304 | Code | Unit Price Euro |
|---------------------------------------|----------|-----------------|
| 300 x 300 mm bottom strainer | F00285-Y | 100.00 |
| 400 x 400 mm bottom strainer | F00286-Y | 200.00 |
| 600 x 600 mm bottom strainer | F00288-Y | 300.00 |

| Square Bottom suction grille AISI-316 | Code | Unit Price Euro |
|---------------------------------------|----------|-----------------|
| 300 x 300 mm bottom strainer | F30765-Y | 125.00 |
| 400 x 400 mm bottom strainer | F30766-Y | 250.00 |
| 600 x 600 mm bottom strainer | F30769-Y | 475.00 |

POOL EQUIPMENT



ATTACHMENT FILTRATION SET

D1_tan Mounting Filtration Set

The d1_ housing, made of polyester, consists of a double skimmer a z1, a feed nozzle, a double cartridge filter, and a pump.



| Filtration Set | Code | Unit Price Euro |
|--|--------------|-----------------|
| FB12 For 45m ³ pools, 12 m ³ /h flow rate, 0.5 kW pump. | 66889 | 3,100.00 |
| FB12 For 45m ³ pools, 12 m ³ /h flow rate + 0.5 kW pump. + LED lighting | 66890 | 3,800.00 |

SUPER ECONOMIC ABS SKIMMERS

Super Economical Mini Skimmer (For All Pools)

This is a mini skimmer made of ABS with a liner-type seal. One wall-mounted feed nozzle is included.



Skimmer

Nozzle

| Liner Tip | Code | Unit Price Euro |
|---|----------------|-----------------|
| Mini Skimmer (1 unit included with feeder A Z1) | A9001BX | 54.00 |

Super Economical Geni_A 1z1 Skimmer (For All Pools)

This is a mini skimmer made of ABS with a liner-type seal. One wall-mounted feed nozzle is included.



Skimmer

Nozzle

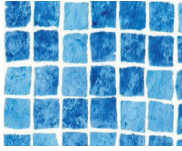
| Liner Tip | Code | Unit Price Euro |
|--------------------|----------------|-----------------|
| Geni_A 1z1 Skimmer | A9002BX | 63.00 |

POOL LININGS

LINER COATINGS

Mosaic Pattern Liner

1.5 mm thick, measuring 25 m x 1.65 m.



| | Code | NET UNIT PRICE EURO | | |
|----------------|---------|---------------------|--------------|---------|
| | | Pe_in | Credit Card1 | 60 Days |
| Mosaic pattern | EXT-768 | 11.80 | 12.20 | 13.20 |

Dark Blue Liner

1.5 mm thick, measuring 25 m x 1.65 m.



| | Code | NET UNIT PRICE EURO | | |
|-----------|------|---------------------|--------------|---------|
| | | Pe_in | Credit Card1 | 60 Days |
| Dark blue | 5925 | 11.80 | 12.20 | 13.20 |

Light Blue Liner

1.2 mm thick, measuring 25 m x 1.65 m.



| | Code | NET UNIT PRICE EURO | | |
|------------|------|---------------------|--------------|---------|
| | | Pe_in | Credit Card1 | 60 Days |
| Light blue | 8006 | 11.80 | 12.20 | 13.20 |

Dark Blue Mosaic Pattern Liner

1.5 mm thick, measuring 25 m x 1.65 m.



| | Code | NET UNIT PRICE EURO | | |
|----------------|-------|---------------------|--------------|---------|
| | | Pe_in | Credit Card1 | 60 Days |
| Mosaic pattern | T3699 | 11.80 | 12.20 | 13.20 |

Sand Pattern Liner

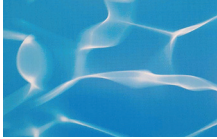
1.5 mm thick, measuring 25 m x 1.65 m.



| | Code | NET UNIT PRICE EURO | | |
|-----------|------|---------------------|--------------|---------|
| | | Pe_in | Credit Card1 | 60 Days |
| Dark blue | F221 | 11.80 | 12.20 | 13.20 |

POOL LININGS

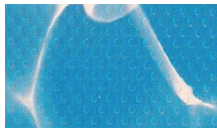
LINER COATINGS



Blue Water Patterned Liner - Non-Slip

1.5 mm thick, measuring 25 m x 1.65 m.

| | Code | NET UNIT PRICE EURO | | |
|----------------|-------|---------------------|--------------|---------|
| | | Pe_in | Credit Card1 | 60 Days |
| Mosaic pattern | F-286 | 11.80 | 12.20 | 13.20 |



Blue Water Patterned Liner - Non-Slip

1.5 mm thick, measuring 25 m x 1.65 m.

| | Code | NET UNIT PRICE EURO | | |
|----------------|---------|---------------------|--------------|---------|
| | | Pe_in | Credit Card1 | 60 Days |
| Mosaic pattern | F-286-S | 11.80 | 12.20 | 13.20 |



Mosaic Pattern Liner - Non-Slip

1.5 mm thick, measuring 25 m x 1.65 m.

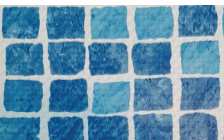
| | Code | NET UNIT PRICE EURO | | |
|-----------|-------|---------------------|--------------|---------|
| | | Pe_in | Credit Card1 | 60 Days |
| Dark blue | F-520 | 11.80 | 12.20 | 13.20 |



Gray Wall

1.2 mm thick, measuring 25 m x 1.65 m.

| | Code | NET UNIT PRICE EURO | | |
|------|-------|---------------------|--------------|---------|
| | | Pe_in | Credit Card1 | 60 Days |
| Gray | F-233 | 11.80 | 12.20 | 13.20 |



Blue Mosaic Pattern Liner - Non-Slip

1.5 mm thick, measuring 25 m x 1.65 m.

| | Code | NET UNIT PRICE EURO | | |
|----------------|-----------|---------------------|--------------|---------|
| | | Pe_in | Credit Card1 | 60 Days |
| Mosaic pattern | EXT-768-S | 11.80 | 12.20 | 13.20 |

POOL LIGHTING EQUIPMENT

ECONOMICAL LED LIGHTING

Economical PAR56 LED bulbs (12 Volt)



| SAMSUNG (SMD) PAR56 LED BULB (30W) | Code | Unit Price Euro |
|--|----------|-----------------|
| White/Day1_1 1 (AC) (4500 Lumens) | FLD01 | 27.00 |
| Blue (AC) (540 Lumens) | FLD02 | 30.00 |
| RGB (4-wire) (1250 Lumens) | FLD03 | 33.00 |
| RGB ON-OFF color switching (2-wire DC) (1250 Lumens) | FLD03-ON | 44.00 |

ECONOMICAL LED LIGHTING

Economical SUPERFINE pool lighting fixture (Ø 300 mm)

Pool lighting fixture made of ABS, with LED bulb. Compatible with all pool casings (joker connection).



| 30W Samsung SMD LED Bulb (1 piece complete set) | Code | Unit Price Euro |
|---|-------|-----------------|
| White (AC) (4500 Lumens) | FLD21 | 52.50 |
| Day1_1 1 (AC) (4500 Lumens) | FLS23 | 52.50 |
| Blue (AC) (540 Lumens) | FLS22 | 55.00 |
| RGB (4-wire DC) (1250 Lumens) | FLD27 | 58.00 |

| | | |
|---|--|-------|
| SL1M reinforced concrete casing depth 6cm | | 10.00 |
| Stainless steel frame difference ¹ | | 35.00 |

Economical socket-type pool lighting fixture (Ø 300 mm)

Pool lighting fixture made of ABS, complete with LED bulb.



| 30W SMD LED BULB 1LE COMPLETE | Code | Unit Price Euro |
|---|-----------|-----------------|
| White (AC) (4500 Lumens) | FLD28 | 60.00 |
| Day1_1 1 (AC) (4500 Lumens) | FLD28-G | 60.00 |
| Blue (AC) (540 Lumens) | FLD29 | 63.00 |
| RGB (4-wire DC) (1250 Lumens) | FLD29-RGB | 65.00 |
| Stainless steel frame difference ¹ | | 35.00 |

POOL LIGHTING EQUIPMENT

ECONOMICAL FLAT LED LIGHTING

Economical Slim LED Bulb S1va Top Mounted Projector (Ø 260 mm)

Made of ABS, 33 mm thick, includes power cable and mounting bracket, 12 Volt.



| 30W SMD LED | Code | Unit Price Euro |
|-----------------------------------|----------|-----------------|
| White (4500 Lumens) | FLDS76 | 38.00 |
| Day 1_1 1 (4500 Lumens) | FLDS76-G | 38.00 |
| Blue (540 Lumens) | FLDS77 | 40.00 |
| RGB (4-wire) (1250 Lumens) | FLDS79 | 40.00 |
| Stainless steel frame difference1 | | 35.00 |

Economical LED bulb M1D1 s1va top spotlight (Ø 160 mm)

Made of ABS, 20 mm thick, includes power cable and mounting bracket, 12 Volt.



| 2W SMD LED | Code | Unit Price Euro |
|----------------------------------|----------|-----------------|
| White (860 Lumens) (AC) | FLDS80 | 30.00 |
| unit1_1 1 (860 Lumens) (AC) | FLDS80-G | 30.00 |
| GB (4 Cables 750 Lumens) (DC) | FLDS81 | 33.00 |
| Blue (540 Lumens) (AC) | FLDS82 | 35.00 |
| Lionless steel frame difference1 | | 30.00 |

Economical LED bulb M1N1 s1va-mounted floodlight (Ø 125 mm)

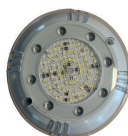
Made of ABS, 25 mm thick, includes power cable and mounting bracket, 12 Volt.



| 8W BULB 1LE | Code | Unit Price Euro |
|-----------------------------------|----------|-----------------|
| White (750 Lumens) (AC/DC) | FLDS83 | 25.00 |
| Day1_1 1 (750 Lumens) (AC/DC) | FLDS83-G | 25.00 |
| Blue (350 Lumens) (AC/DC) | FLDS84 | 25.00 |
| RGB (4 Cables 600 Lumens) (DC) | FLDS85 | 30.00 |
| Stainless steel frame difference1 | | 25.00 |

Economical LED MINI pool and step lighting (Ø 100 mm)

Ideal for pool and step lighting with a diameter of Ø 10 cm. Heat-resistant, insulated housing. Very strong glass resistant to UV rays and impact. Long-lasting lighting resistant to pool chemicals. IP68 protection class. Patented product. 12 volts.



| M1N1 STEP LIGHTING | Lumen | Code | Unit Price Euro |
|--------------------------------|-------|--------|-----------------|
| With white LED bulb (15 W)(AC) | 1500 | IML800 | 41.00 |
| Day1_1 1 LED bulb (15W)(AC) | 1500 | IML801 | 41.00 |
| With blue LED bulb (15 W)(AC) | 1500 | IML802 | 41.00 |
| RGB LED bulb (9 W)(DC) | 1500 | IML804 | 54.00 |

POOL LIGHTING EQUIPMENT

AQUA
SPHERE



AQUASPHERE ECONOMICAL LED LIGHTING

AquaSphere PAR56 LED Water Alt1 Bulbs

IPX 8 protection class.
25,000 hours lifespan.

25,000 hours of service life.

| With PAR56 LED bulb | Strength | Lumen | Code | Unit Price Euro |
|---------------------|----------|---------|-------|-----------------|
| White | 11.5 W | 1300 lm | 74939 | 63.00 |
| RGB Remote Control | 15 W | 900 lm | 71740 | 135.00 |

AquaSphere PAR56 LED Underwater Projectors (COMPLETE ASSEMBLY, HOUSING EXCLUDED)

It must be connected to a 12 VAC transformer.
2.5 m cable.
IPX 8 protection class.
Complete underwater searchlight, excluding housing.
25,000 hours of service life.

25,000 hours of service life.

| With PAR56 LED bulb | Strength | Lumen | Code | Unit Price Euro |
|---------------------------|----------|---------|------------|-----------------|
| White LED, White Frame | 11.5 W | 1300 lm | 74940 | 135.00 |
| RGB LED, White Frame | 15 W | 900 lm | 75829 | 122.00 |
| RGB LED, Anthracite Frame | 15 W | 900 lm | 75829CL144 | 170.00 |
| RGB Remote Control | - | - | 75828 | 24.00 |



UNDERWATER with PAR56 LED bulb

To properly illuminate your pool, we recommend using one light bulb for every 20 m².
Day 1_1 For small area and stainless steel pools, the number of bulbs (floodlights) used per m2 is increased.

It must be subtracted.

Floodlights should always be used underwater.

Voltage range:12V AC,Protection class 1:IPX8

Cable and housing included. Suitable for reinforced concrete pools.



| COMPLETE PROJECTOR | Code | Unit Price Euro |
|--|------------|-----------------|
| Complete fixture including Souk White Eco LED (16 W) bulb. | 66828IP69 | 162.00 |
| Stainless steel front frame for this projector. | 4403010301 | 82.39 |

PAR 56 LED Underwater Bulb



| | Code | Unit Price Euro |
|-----------------------|-------|-----------------|
| Cold white (18W bulb) | 63132 | 84.00 |

POOL LIGHTING EQUIPMENT

ECONOMIC POOL LIGHTING ACCESSORIES

300W / 12V Halogen economical light bulb



| Par56 | Code | Unit Price Euro |
|-----------------------|---------|-----------------|
| 300W / 12V Par56 bulb | 00370/1 | 24.00 |

Economic transformer



It has a full resin-filled LED indicator and fuse. It has aluminum coils.

| FILLED T1P | Code | Unit Price Euro |
|--------------------|---------|-----------------|
| 100 W / 12 / 220 V | 00383-N | 44.00 |
| 300 W / 12 / 220 V | 00384-Y | 50.00 |
| 600 W / 12 / 220 V | 00385-Y | 115.00 |

Economical Pool Fixture 1 - Concrete Blind Frame

A 30 x 30 cm concrete pool lamp housing made of plastic.



| | Code | Unit Price Euro |
|-----------|---------|-----------------|
| Lamp Tas1 | 25462-E | 6.00 |

Economical TTR Cable

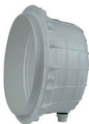


| TTR CABLE | Code | Unit Price Euro |
|-------------------|-----------|-----------------|
| 2 x 1.5 (1 meter) | 777001533 | LFS |
| 4 x 1 (1 meter) | 77700154 | LFS |
| 4 x 2 (1 meter) | 77700153 | LFS |
| 4 x 2.5 (1 meter) | 77700155 | LFS |

Economical Cable Sleeve (Gas Hose)

| | Code | Unit Price Euro |
|----------------|----------|-----------------|
| 1 meter (1/2") | 77700156 | LFS |

Economical Pool Fixture Housings (1 for)



| | Code | Unit Price Euro |
|-----------------------|------------------|-----------------|
| Mini beehive Ø170 | FLD-118-CARRIAGE | LFS |
| Standard housing Ø225 | 00349-Y | 18.29 |

Liner Gasket Set for Economical Pool Lighting Fixture



| | Code | Unit Price Euro |
|------------------|-------------|-----------------|
| Liner Gasket Set | FLDLINERKIT | 22.00 |

POOL LIGHTING EQUIPMENT

ECONOMICAL DECORATIVE FOUNTAIN LED LIGHTING

Economical mini spotlights for ornamental ponds¹



ABS-made, foot-mounted type. Available in white and black, Ø90 mm diameter ornamental pond light fixture, 12 Volt, 3 W DC.

| Foot type (ABS) | Code | Unit Price Euro |
|---|---------------|-----------------|
| White/Day1_1 1 12W (DC) (390 lumens) | FLD130 | 34.00 |
| Turquoise, RGB, Green, Red, Blue, Purple 3W 12V (DC) (180 lumens) | FLD131 | 36.00 |



Made of stainless steel. Ø90 mm diameter ornamental pond fixture, 12 Volts, with stainless steel base.

| Leg type (Stainless Steel) | Code | Unit Price Euro |
|---|---------------|-----------------|
| White/Day1_1 1 6W 12V (DC) (390 lumens) | FLD154 | 78.00 |
| Turquoise, RGB, Green, Red, Blue, Purple 6W 12V (DC) (180 lumens) | FLD155 | 85.00 |



ABS-made, plug-in type D63 pipe fitting. ABS-framed ornamental pond fixture with a diameter of Ø90 mm.

| Snap-on type (ABS) | Code | Unit Price Euro |
|---|----------------|-----------------|
| White/Day1_1 1 3W 12V (DC) (390 Lumens) | FLD142 | 34.00 |
| Turquoise, RGB, Green, Red, Blue, Purple 3W 12V (DC) (180 lumens) | FLD143 | 36.00 |
| K1rm1z1 (DC) 3W (DC) (180 lumens) | FLD143K | 36.00 |
| Blue (DC) 3W (DC) (180 lumens) | FLD143M | 36.00 |



Made of 304 grade stainless steel. Snap-on type for D63 pipe. Ø90 mm diameter ornamental pond fitting.

| Snap-on type (stainless steel) | Code | Unit Price Euro |
|---|-----------------|-----------------|
| White/Day1_1 1 3W 12V (DC) (390 Lumens) | FLD142PC | 56.00 |
| Turquoise, RGB, Green, Red, Blue, Purple 3W 12V (DC) (180 lumens) | FLD143PC | 60.00 |

POOL LIGHTING EQUIPMENT

ECONOMICAL DECORATIVE FOUNTAIN LED LIGHTING



Economical LED lighting for decorative ponds.

Made of 304 grade stainless steel. Ø130 mm diameter ornamental pool fixture, with stainless steel base.

| Par 38 LED bulb | Code | Unit Price Euro |
|---|---------------|-----------------|
| White-Day1_1 1 9W 12V (1200 Lumens) | FLD164 | 85.00 |
| RGB, Blue, Green, Purple, Turquoise 9W 12V (700 Lumens) | FLD170 | 88.00 |



Decorative pool fixture made of 304 grade stainless steel, Ø175 mm diameter. Fountain nozzle not included.

| Simit Type LED Fountain Lighting | Code | Unit Price Euro |
|--------------------------------------|---------------|-----------------|
| White-Day1_1 1 12W 24V (1600 Lumens) | FLD213 | 98.00 |
| RGB 12W 24V (850 Lumens) | FLD216 | 106.00 |
| 1" Foam Sprinkler | | 32.00 |

PANELS FOR ECONOMIC SWIMMING POOLS AND DECORATIVE POOLS

RGB animation board (12V - 24V) (DC)



The panel includes a transformer, RGB lighting system, and remote control.

| | Code | Unit Price Euro |
|-----------------|----------------|-----------------|
| For 0-5 Lamps | PN/RGB0 | 180.00 |
| For 5-10 lamps | PN/RGB | 200.00 |
| For 10-15 lamps | PN/RGB2 | 235.00 |
| For 15-20 lamps | PN/RGB3 | 250.00 |

Engine room control panel



| SINGLE-PHASE / TRI-PHASE Panel | Code | Unit Price Euro |
|---|-----------------|-----------------|
| 1 pump, 1 group of lamps + residual current relay. | PN/1-1 | 330.00 |
| 1 pump, 1 group of lamps, two timers. + leakage current relay | PN/1-1CT | 470.00 |
| 2 pumps, 2 groups of lamps + residual current relay. | PN/2-2 | 480.00 |
| 2 pumps, 2 groups of lamps, two timers. + leakage current relay | PN/2-2CT | 630.00 |

Notes:All of our panels are equipped with residual current devices.

Installation of a residual current device (RCD) without grounding in the pool machine room, along with instructions. **It is absolutely forbidden.**

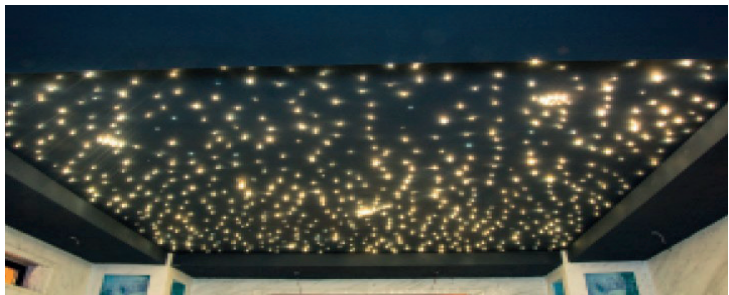
FIBER OPTIC LIGHTING EQUIPMENT

FIBER OPTIC LIGHTING SYSTEMS

Sauna - Turkish bath fiber optic ceiling lighting system

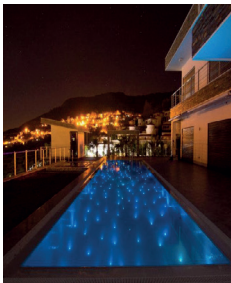
- " RGB or monochrome 1k source 1
- " 150 pieces of fiber optic cable, 2 meters long (100 pieces of Ø0.75 mm, 40 pieces of Ø1 mm, 10 pieces of Ø1.5 mm)

| | Code | Unit Price Euro |
|--------------------------------------|------|--------------------|
| 2 x 2 m RGB or single color lighting | | LFS |



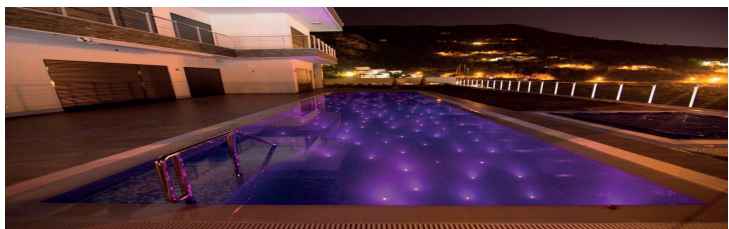
swimming pool fiber optic lighting system

RGB or monochrome 90W 1kW power supply, complete set including PVC jacketed fiber optic cable and termination kit.



| | Code | Unit Price Euro |
|--|------|--------------------|
| 4 x 8 M POOL 1 FOR 1 Complete system with RGB or monochrome 1k source, 1,600 m cable (2 mm 550 meters, 12-wire Ø0.75 mm cable 50 m), and 60 1k termination strips. | | LFS |
| 5 x 10 M POOL 1 FOR 1 Complete system with RGB or monochrome 1k source, 1800 m cable (Ø2 mm 700 m, 12-strand Ø0.75 mm cable 100 m), and 85 1k termination strips. | | LFS |
| 6 x 12 M POOL 1 FOR 1 Complete system with RGB or monochrome 1k source, 1050 m cable (Ø2 mm 950 m, 12-piece Ø0.75 mm cable 100 m), and 110 1k termination strips. | | LFS |

Note: Please inquire about pricing for other projects.



POOL LIGHTING EQUIPMENT



Cable connection options



Standard



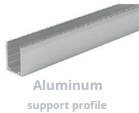
Left side



Lower



right side



Aluminum support profile



Stainless steel flex. support profile

ECONOMIC LED STRIP LIGHTING

Flexible Strip LED Lighting

IP68 linear flexible strip LED lighting system suitable for underwater use.

- " Class A energy efficiency.
- " With a bending diameter of 12 cm, it is ideal for use on curved surfaces. It is custom-made to fit pool dimensions.
- " Cable exit connectors are specially designed to eliminate blind spots. With the option of cable exiting from the desired edge, it ensures perfect compatibility with your project.
- " Suitable for mounting with or without aluminum or stainless steel support profiles. Can be manufactured in desired Kelvin values. White, warm white, RGB, and DMX color options are available. Operates with a 24V DC transformer.
- " It is resistant to shocks and impacts and has an IK08 protection class. It comes with a 3-year warranty.
- " The operating temperature is -20°C / +50°C. The LED lifespan is 50,000 hours.
- " Dimmable SMD LED, 1,1k angle is 210°.



| Single color or RGB, DMX strip LED, supports Pro Li, transformer included. | Code | Unit Price Euro |
|--|----------------|-----------------|
| Complete set for a 3 x 6 m pool. | FLD-SL3 | LFS |
| Complete set for a 4 x 8 m pool. | FLD-SL4 | LFS |
| Complete set for a 5 x 10 m pool. | FLD-SL5 | LFS |
| Complete set for a 6 x 12 m pool. | FLD-SL6 | LFS |

Note: Please inquire about pricing for other projects.



POOL CLEANING EQUIPMENT

AQUASPHERE ASR 105 POOL ROBOT

ASR 105 Pool Robot



SIMPLE, EFFICIENT AND EASY TO USE.
 + Efficient floor and wall cleaning
 + Lightweight for ease of use.
 + Easy-to-clean filter
 + For ceramic pools

| ASR 105 | Code | Unit Price Euro |
|----------------------|----------|-----------------|
| Economic Century 105 | WR000502 | 1,295.00 |

| WHICH POOLS ARE SUITABLE FOR CHINA? | |
|-------------------------------------|---|
| Pool features | Earth-filled and above-ground rigid-walled pools, maximum 9x4 m |
| Pool_attached | Rectangular, oval, freeform |
| Background_attached | Flat, soft, various e-shaped |
| Pool Surface | Ceramic,Liner,Polyester,PVC,Reinforced Concrete |



| EXPLANATION | |
|------------------------------------|--|
| Cleaning areas1 | Floors/Walls |
| Cleaning Cycle number and duration | 1 cycle (Ground, Walls, Waterline 2h:30) |
| Power supply 1 | Before the transformer, connected to the 230 V grid, autonomous. |
| Orientation | Pre-programmed1 |
| Check system | Palet-2 engine |
| gear | gear |
| Brushes | Yes |
| Opaque filter cover 1 | Yes |
| Security | Pool surroundings, water d1,1 work safety i,tan1, electronic motor protection1 |
| Filter system access | Rigid filter housing with easy top access. |

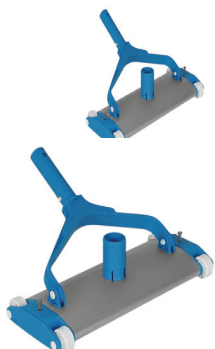


TECHNICAL SPECIFICATIONS

| TECHNICAL SPECIFICATIONS | |
|--------------------------|--|
| Motor say1s1 | 3 |
| Power supply 1 feed | 100-240 VAC; 50 / 60 Hz |
| Power supply 1 | 30 VDC |
| Playing power | 150 W |
| Cable length | 15m |
| Robot a 1r11 1 | 7.5 kg |
| Filtering level | 150 |
| Filtering capacity | 3L |
| Emi_ a z1 geni_li i | 23 cm |
| Filter system, access | Rigid filter housing with easy top access. |



POOL CLEANING EQUIPMENT



SUPER ECONOMICAL CLEANING EQUIPMENT

Super economical aluminum horse broom.

| Clip-on type | Code | Unit Price Euro |
|--------------------------------|---------|-----------------|
| Super Economic Flat 345 mm 1½" | A2015BU | 42.00 |
| Super Economic Flat 450 mm 1½" | A2016BU | 44.00 |
| Economical Flat 350 mm 1½" | 01355-E | 46.00 |
| Economical Flat 450 mm 2" | 01356-E | 54.00 |

| Bolt1 Wide, type | Code | Unit Price Euro |
|---------------------------|---------|-----------------|
| Economical Flat 600 mm 2" | 01357-E | 175.00 |
| Economical Flat 800 mm 2" | 01358-E | 225.00 |



Super Economical ABS Liner Pool Vacuum Cleaner

| Clip-on type | Hose Inlet | Code | Unit Price Euro |
|-----------------|------------|---------|-----------------|
| Triangular Type | 1 1/4" | A2008BU | 22.00 |
| Butterfly Type | 1 1/2" | A2001BU | 22.00 |



AstralPool Round Liner Pool Sweeper

| Clip-on type | Hose Inlet | Code | Unit Price Euro |
|--------------|------------|-------|-----------------|
| Ø 250 mm | 1 1/2" | 01348 | 11.00 |

POOL SWEEPING HOSES

Made from PE.



| | Code | Unit Price Euro |
|-------------------------|---------|-----------------|
| Ø 38 mm (1½") 30 meters | CFVH030 | 120.00 |
| Ø 50 mm (2") 30 meters | CFVH050 | 200.00 |

POOL DISPENSERS AND SCOOP PILES



GFK Telescopic Handle

Made of GFK, these broom or brush handles are non-bending and unbreakable. They consist of two interlocking parts.

| GFK Telescopic Handle | Code | Unit Price Euro |
|-----------------------|-------|-----------------|
| 1.6 - 3.0 m | SZ960 | 150.00 |
| 2.5 - 5.0 m | SZ956 | 180.00 |
| 3.6 - 10.0 m | SZ964 | 450.00 |

ALUMINUM HANDLES

| Clip-on type | Code | Unit Price Euro |
|--------------------|-----------|-----------------|
| 2 * 2 - 4.0 m | 28087-E | 34.00 |
| 1.4 * 3.5 - 4.9 m | 33051MP10 | 29.00 |
| 2 * 2.4 - 4.8 m | 28083-E | 40.00 |
| 2 * 3 - 6.0 m | 28084-E | 50.00 |
| 1.8 * 3.6 - 6.5 m | CCMG85 | 33.00 |
| 2 * 3.5 - 7.0 m | TS11235RB | 55.00 |
| 3 * 3 - 9.0 m | 28085-E | 95.00 |
| 2.4 * 4.8 - 11.5 m | CCMG84 | 40.00 |
| 4 * 3 - 12.0 m | 28089-E | 175.00 |
| 5 * 3 - 15.0 m | 28088-E | 165.00 |

SUPER ECONOMICAL DISPENSERS

Floating type dispensers

| | Code | Unit Price Euro |
|--------------------|---------|-----------------|
| Floating dispenser | A6001BU | 12.00 |



SUPER ECONOMICAL THERMOMETERS

| Celsius & Fahrenheit | Code | Unit Price Euro |
|----------------------|---------|-----------------|
| Jumbo thermometer | CBM073 | 14.00 |
| Round thermometer | TH12WBX | 14.00 |
| Round thermometer | A7008BU | 22.00 |



SUPER ECONOMIC TEST KITS

| Super Economical pH/Cl s1v111 test kit | Code | Unit Price Euro |
|--|---------|-----------------|
| Boxed pH/Cl s1v111 test kit | TK01NBU | 11.00 |
| Boxed pH/Cl s1v111 test kit | A8007BU | 11.00 |
| Backup pH/Cl s1v1s1 | TK02NBU | 10.00 |



POOL SLEEPERS AND SALT DEVICES

SUPER ECONOMICAL EXCAVATORS



| Deep type (clip-on) | Code | Unit Price Euro |
|---------------------|---------|-----------------|
| Blue net scoop | A3010BU | 14.00 |

| Surface type (clip-on) | Code | Unit Price Euro |
|------------------------|--------|-----------------|
| Navy blue mesh scoop | LS07BU | 14.00 |

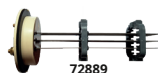
| Aluminum handle ladle | Code | Unit Price Euro |
|--|--------|-----------------|
| 1.5 m long, handle-type surface loader | LS15BU | 15.00 |

SUPER ECONOMICAL POOL BRUSHES

| Clip-on type | Code | Unit Price Euro |
|------------------|----------|-----------------|
| 45 cm wide brush | A5023BU | 14.00 |
| 26 cm wide brush | BR02BU/P | 13.00 |



64315



72889

BERING EKONOM1K SALT ELECTROL1Z DEVICES

BERING Sel, salt electrolysis device1

Self-cleaning electrode, reverse polarized (every 4 hours) salt electrolysis device. Ideal for pools up to 35 m³. Manual production setting (0-100%). 3 different LED indicators: solid green: production, solid red: device in standby mode, flashing red: fault (insufficient flow rate or salt quantity). Single electrode for 35 m³. IP24 waterproof housing.

Automatic calibration.

| | Code | Unit Price Euro |
|----------------------------------|-------|-----------------|
| Bering Sel salt device1 - 8 gr/h | 64315 | 810.00 |
| Electrode 35 m3 | 72889 | 668.30 |

DISINFECTION SYSTEMS

IDEGIS DOMOTIC SERIES SALT ELECTROLYSIS SYSTEMS



Domotic salt electrolyzer¹, with pH + ORP control.

In addition to chlorine production, pH and ORP control are also performed. Production stops if the chlorine level reaches the set value. It is shipped with a pH, ORP sensor, calibration fluids, and probe holder. It gives an alarm at high (8.5+) and low (6.5-) pH levels. **The pH dosing pump must be supplied separately.**

| Domotic + | Code | Unit Price Euro |
|-----------------------------|----------------|-----------------|
| 12 gr/h (50 mswimming pool) | DOM-12+ | 3,400.00 |
| 24 gr/h (80 mswimming pool) | DOM-24+ | 3,700.00 |

Domotic salt electrolysis device¹, with pH control



DOMOTIC Series Salt Electrolysis Devices¹ 50 to 120m They can be used in private pools of varying volumes. They feature a self-cleaning titanium plate electrode chamber. High and low salt level alarms, a transparent electrolysis chamber, 12,000 hours electrode life, and proportional operation in the 10-100% range with 10% increments.

For electrolysis, it is recommended to initially add 4-6g/lit of salt to the pool water.

In addition to chlorine production, pH control is also performed. Includes pH sensor, calibration fluid, and probe holder.

It gives an alarm at high (8.5+) and low (6.5-) pH levels. **The pH dosing pump must be supplied separately.**

| Domotic C-PH | Code | Unit Price Euro |
|------------------------------|-----------------|-----------------|
| 12 gr/h (50 mswimming pool) | DOM-12PH | 2,240.00 |
| 32 gr/h (120 mswimming pool) | DOM-32PH | 2,740.00 |

IDEGIS TECHNO SERIES SALT ELECTROLYSIS SYSTEMS

Tecno salt electrolysis device¹



TECNO Series Salt Electrolysis Devices can be used in private pools with volumes between 25 and 160 m³.

It has a titanium plate electrode reservoir that cleans it.

Transparent electrolysis chamber, High and low salt level alarms, 10,000 hours electrode life, 20-100% range.

20% increase proportional work.

For electrolysis, it is recommended to initially add 4-6g/lit of salt to the pool water.

| Tecno | Code | Unit Price Euro |
|------------------------------|--------------|-----------------|
| 40 gr/h (160 mswimming pool) | DT-40 | 2,300.00 |

DISINFECTION SYSTEMS



IDEGIS TECNO SER1S1 SALT ELECTROLYSIS SYSTEMS1

Tecno salt electrolysis device1, with pH control.

In addition to chlorine production, pH control is also performed. A pH dosing pump must be supplied along with the electrolysis device. It gives an alarm at high (8.5+) and low (6.5-) pH levels. Calibration fluid, pH electrode and electrode holder are included.

Note: Dosing pump 1 is not included.

| Techno ph | Code | Unit Price Euro |
|-------------------------------|---------|-----------------|
| 7 gr/h (25 m swimming pool) | DT-7PH | 1,755.00 |
| 12 gr/h (50 m swimming pool) | DT-12PH | 1,870.00 |
| 21 gr/h (80 m swimming pool) | DT-21PH | 2,250.00 |
| 30 gr/h (120 m swimming pool) | DT-30PH | 2,380.00 |
| 40 gr/h (160 m swimming pool) | DT-40PH | 2,800.00 |

IDEGIS TUZ ELEKTROLIZ S1STEM1 ACCESSORIES



| | Code | Unit Price Euro |
|---------------------|--------|-----------------|
| Electrode reservoir | R-127 | 82.66 |
| Poolstation | PS-001 | 1,040.00 |

SER1 200 AUTOMATIC CONTROL DEVICES

It can control compact pH/ORP/free chlorine levels. It is 100% compatible with salt electrolysis devices.

- " Ak1111 dosing function
- " Guaranteed dosing thanks to the pump stop pH function.
- " Easy service with integrated dosing thanks to the Pump Express function.

Series 200 Control Device1



| pH | Code | Unit Price Euro |
|---|---------|-----------------|
| pH control device1 | RPH-200 | 575.00 |
| pH controller1 (including dosing pump1) | RPH-201 | 695.00 |



| ORP | Code | Unit Price Euro |
|--|---------|-----------------|
| ORP control device1 | RMV-200 | 640.00 |
| ORP controller1 (including dosing pump1) | RMV-201 | 810.00 |

DISINFECTION SYSTEMS

DEL OZONE SYSTEM (FOR PRIVATE POOLS)

DEL OZONE APG Ozone Generator



Ozone systems provide clean, clear, and safe water for your pool, as well as significantly reducing chlorine use.

How does it do this?

"It eliminates 99.9% of harmful pollutants."

"It rapidly oxidizes Cryptosporidium, Giardia, and other chlorine-resistant microorganisms." It significantly reduces chemical demand and increases the effectiveness of disinfectants.

"By breaking down chlorine (chloramines), ozone makes chlorine more effective and the water more comfortable to use." While ozone does so much, it provides up to 90% savings in chlorine.

| | Code | Unit Price Euro |
|--|-----------|-----------------|
| DEL OZONE 25 100 m³ for pools up to | EC-10 | 1,800.00 |
| DEL OZONE 50 200 m³ for pools up to | EC-20 | 2,250.00 |
| DEL OZONE 100 400 m³ for pools up to | EC-40 | 3,150.00 |
| MDV and Mounting Kit | MDV-10 | 1,270.00 |
| Universal venturi injector kit (bypass L1) | 9-0210-11 | 2,170.00 |

ECONOMICAL DOSAGE PHE TO ZATO ADDITIONAL KIT FOR RESPONSE TO SALT TO AM RILER 1



Economical pH/Redox replacement electrodes1

| Economic | Code | Unit Price Euro |
|--------------|----------|-----------------|
| pH electrode | 00043011 | 125.00 |
| Rx electrode | 00043012 | 135.00 |

Economical chemical drums



| Polyethylene | Code | Unit Price Euro |
|--------------|---------|-----------------|
| 100 liters | 01314-M | 90.00 |
| 200 liters | 01314-Y | 140.00 |
| 300 liters | 01314-E | 240.00 |

DISINFECTION SYSTEMS



MANUAL ECONOMIC DOSING PUMPS

Micro manual dosing pump1 (analog)

Electromagnetic constant flow analog dosing pump, ON-OFF adjustable, pump body reinforced with PP. Comes with standard accessories including a 2.5 meter power cable and wall mounting kit.



| | Code | Unit Price Euro |
|-----------------|--------------|--------------------|
| 2 l/h 12 bar | E04CA1202857 | 200.00 |
| 5 l/h - 9 bar | E04CA0905857 | 200.00 |
| 10 l/h - 11 bar | E04CA0410857 | 200.00 |

Micro manual dosing pump1 (with digital control and level sensor)

Electromagnetic constant flow digital dosing pump, ON-OFF adjustable, pump body reinforced with PP. Includes 2.5 meter power cable and wall mounting kit, suction filter, check valves, and hoses.



| | Code | Unit Price Euro |
|----------------|--------------|--------------------|
| 2 l/h 11 bar | E01CA1102857 | 240.00 |
| 5 l/h - 8 bar | E01CA0805857 | 240.00 |
| 10 l/h - 2 bar | E01CA0210857 | 240.00 |

ECONOMIC DOSAGE REGULATORS

MP Dual PH/RX Regulator Salt Dispenser Control Panel



- " The pH/Redox control system with regulator measures pH and doses, measures chlorine in Rx units, and switches the salt dispenser on and off. 3
- " operating modes: continuous, ON/OFF, and ratio.
- " Programmable dose alarm, start
- " delay option, optional
- " temperature and level sensor.
- " Peristaltic pH dosing pump, capacity 6 l/h, 1 bar,
- " 230V AC 50 Hz power supply, IP-65 protection
- " class, STAND-BY mode for dosing stop, ideal for
- " saline solutions with gold-tipped Rx electrode,
- " backlit digital LCD display.

| MP Dual | Code | Unit Price Euro |
|--|------------|--------------------|
| Peristaltic pH dosing regulator salt dispenser control system (complete) | 11/20/2015 | 850.00 |

DISINFECTION SYSTEMS



508AA0116857



48327M



S110A0210857



48301M-RX



ECONOMIC DOSAGE REGULATORS AND CONTROL PANELS

Micro (pH/Rx) dosing regulators (Peristaltic)

Peristaltic dosing regulator, electrode holder, calibration solution and mounting kit. Supplied with injection valve, suction hose and discharge hose and pH electrode or Rx electrode. Wall mounting kit included, IP 65 protection class. Dosing pumps have a capacity of 1.6 l/h - 1 bar.

| Includes electrode probe. | Code | Unit Price Euro |
|--|--------------|-----------------|
| Micro Rx regulator | 509AA0116857 | 370.00 |
| Micro pH regulator | 508AA0116857 | 370.00 |
| Micro Rx regulator panel mounted + with pre-filter | 48327M-RX | 640.00 |
| Micro pH regulator panel mounted + with pre-filter | 48327M-PH | 640.00 |

Micro (pH/Rx) dosing regulators (Membrane)

Membrane1 dosing regulator, electrode holder, calibration solution and mounting kit. Supplied with injection valve, suction hose and discharge hose and pH electrode or Rx electrode. Wall mounting kit included, IP 65 protection class.

| Includes electrode probe. | Code | Unit Price Euro |
|--|--------------|-----------------|
| Membran1 Rx regulator-10 l/h, 2 bar | S110A0210857 | 450.00 |
| Membrane pH regulator - 5 l/h, 2 bar | S100A0205857 | 450.00 |
| Membran1 Rx regulator-10 l/h, 2 bar, panel mounted + pre-filter. | 48301M-RX | 700.00 |
| Membrane pH regulator-5 l/h, 2 bar, panel mounted + pre-filter. | 48301M-PH | 700.00 |

Micro UP POOLGUARD Wi-Fi Control Panel (Peristaltic dosing pump1)

Includes 1 peristaltic pH regulator 3 l/h - 1 bar, 1 peristaltic Rx regulator 3 l/h - 1 bar, 1 filtered and 1 transparent electrode carrier chamber, pH electrode and Rx electrode, and adjustment solutions. Panel-mounted system (plug & play). The device can be controlled via Wi-Fi and a mobile application.

| | Code | Unit Price Euro |
|--|--------|-----------------|
| Panel with peristaltic dosing pump (with Wi-Fi connection) | 48327W | 1,450.00 |

DISINFECTION SYSTEMS



ECONOMIC CONTROL PANELS

Micro POOLGUARD Control Panel (Membrane dosing pump1)

Includes 1 pH regulator 5 l/h 2 bar, 1 Rx regulator 10 l/h 2 bar, 1 pre-filter, 1 transparent electrode holder, 1 pH electrode, 1 Rx electrode, and adjustment solutions. Panel-mounted system (plug & play).

| | Code | Unit Price Euro |
|----------------------------|---------|--------------------|
| Membrane dosing pump panel | 48301-M | 1,090.00 |

Micro POOLGUARD Control Panel (Peristaltic dosing pump1)

Includes 1 pH regulator 1.6 l/h 1 bar, 1 Rx regulator 1.6 l/h 1 bar, 1 pre-filter, 1 transparent electrode holder, 1 pH electrode, 1 Rx electrode, and adjustment solutions. Panel-mounted system (plug & play).

| | Code | Unit Price Euro |
|-------------------------------|--------|--------------------|
| Peristaltic dosing pump panel | 48327M | 1,090.00 |

Digital, pH/Redox controlled, 2 peristaltic pumps.
Complete set with pH/Redox sensor, calibration liquid, and suction/discharge accessories.

Dose Pool Panel (Wi-Fi Control)

Digital, 1.5 - 5 lt/h 1.5 bar pH/Redox peristaltic dosing PoolDose Panel pump, with pH/Redox sensor, 0 + 14 pH 0 + 999mV. Wifi controlled display, automatic pH/Redox measurement control system with sensor holders and calibration fluids. Pump head and check valves made of PVDF material (for 150 m3 pools).

| | Code | Unit Price Euro |
|--|----------|--------------------|
| Kemi Dose pool panel with Wi-Fi control. | 48327W-S | 1,575.00 |

Digital, 5 lt/h 5 bar pH/Redox solenoid dosing pump, KemiDose Panel pH/Redox sensor, 0+14pH/ 0+999mV display, Wifi controlled, automatic pH/Redox measurement control system with sensor holders and calibration fluids. Pump head and check valves made of PVDF material (for 500 m3 pools).

Complete set with digital, pH/Redox controlled, 2 dosing pumps, pH/Redox sensor, calibration liquid, and suction/discharge accessories.

| | Code | Unit Price Euro |
|----------------------|----------|--------------------|
| KerniDose Pool Panel | 48301M-S | 1,680.00 |

DISINFECTION SYSTEMS



Blue lagoon
UV-C and Pool equipment



BLUE LAGOON XPERT UV-C DISINFECTION DEVICE (MEDIUM PRESSURE)



Blue Lagoon Xpert UV-C ultraviolet disinfection system

A medium-pressure UV-C device with AISI 316 stainless steel body, suitable for use with salt water, UL and ETL certified, and a lamp life of 9000 hours.

| Blue Lagoon | Code | Unit Price Euro |
|--|-----------|-----------------|
| XPERT 400 (400 WATT) | BPM 00401 | 4,600.00 |
| XPERT 600 (600 WATT) | BPM 00601 | 6,200.00 |
| XPERT 1000 (1000 WATT) | BPM 01001 | 13,100.00 |
| XPERT 1500 (1500 WATT) | BPM 01501 | 13,650.00 |
| XPERT 1500 (1500 WATT Manual Cleaning) | BPM 01502 | 19,950.00 |

BLUE LAGOON BUSTER UV-C DEVICE (MEDIUM PRESSURE MANUAL)

Blue Lagoon UV-C ultraviolet disinfection system

Ideal for all machine rooms requiring high-quality disinfection but with limited installation space. AISI-316L stainless steel housing. Ø 63mm - Ø 50mm adapters included. Housing diameter 70 mm. Maximum operating pressure is 2 bar. 230 V single-phase. Includes a timer showing remaining lamp life.



| | Code | Unit Price Euro |
|----------------------------|---------|-----------------|
| 80 watts (Ø 114) | BP 7082 | 2,660.00 |
| 140 WATT (Ø 114) (AMALGAM) | BP07133 | 2,610.00 |
| 140 WATT (Ø 154) (AMALGAM) | BP07132 | 3,795.00 |
| 420 WATT (Ø 219)(AMALGAM) | BP07392 | 6,237.00 |

COMPACT AOP UV C1 DEVICE



| | Code | Unit Price Euro |
|----------------------------|----------|-----------------|
| Compact AOP UV Device 1 75 | BH12752 | 1,720.00 |
| Compact AOP UV Device1 | BH 12753 | 1,680.00 |

DUPLEX UV-C C1 DEVICE

Suitable for all pets. Includes mounting hardware. Maximum pressure 2.5 Bar, length 100 cm. Ø 63



| | Code | Unit Price Euro |
|---|----------|-----------------|
| 80 watts (17 m ³ /h) (9,000 hours lamp life) | BP 08752 | 985.00 |
| 140 watt (Amalgam) (23 m ³ /h) (16,000 hours lifespan) | BP 08132 | 1,930.00 |

DISINFECTION SYSTEMS



Blue lagoon



BLUE LAGOON UV-C 4 ALL

Blue Lagoon 4ALL UV-C ultraviolet disinfection system

Includes timer, suitable for all pools, horizontal and vertical mounting, easily installed in new and old pool systems, maximum pressure 2 Bar, length 100 cm, diameter 70 mm.

| Blue Lagoon | Code | Unit Price Euro |
|---|----------------|-----------------|
| 40 W (11 m ³ /h) (9000 hours lamp life) | BD01402 | 915.00 |
| 75 W (16 m ³ /h) (9000 hours lamp life) | BD01752 | 945.00 |
| 130 W (Amalgam) (22 m ³ /h) (16,000 hours lamp life) | BD01132 | 1,635.00 |

BLUE LAGOON INOX UV-C

Blue Lagoon INOX UV-C ultraviolet disinfection system

316 L stainless steel body, with timer and flow switch, maximum pressure 5 bar, 100 cm long, Ø 114 mm diameter.



| | Code | Unit Price Euro |
|--|----------------|-----------------|
| 75 watts (18 m ³ /h), 5 bar, 9000 hours lamp life. | BP02752 | 3,350.00 |
| 130 WATT (22 m ³ /h) Amalgam, 5 Bar 14.00 hours lamp life | BP02132 | 4,450.00 |

BLUE LAGOON SIGNAL UV-C

316 L stainless steel body, with timer and flow switch, 2 Bar, 100 cm long, Ø 70 mm diameter.



| | Code | Unit Price Euro |
|--|-----------------|-----------------|
| 40 W (11 m ³ /h) 9000 Hours lamp life | BH 11402 | 960.00 |
| 75 W (16 m ³ /h) 9000 Hours lamp life | BH 11752 | 980.00 |
| 130 W (22 m ³ /h) Amalgam lamp with a lifespan of 16,000 hours. | BH 11132 | 1,640.00 |

TECH UV-C COPPER 1ON1ZATION

316 L stainless steel body, 2.5 Bar. Ø = 70 mm L = 100 cm



| | Code | Unit Price Euro |
|---|-----------------|-----------------|
| 40 watts (11 m ³ /h) (9,000 hours lamp life) | BH 04402 | 1,864.00 |
| 75 watts (16 m ³ /h) (9,000 hours lifespan) | BH 04752 | 2,040.00 |

DISINFECTION SYSTEMS



INOX LOW PRESSURE UV LAMP SYSTEMS / MULTIPLE LAMP SYSTEMS

Blue Lagoon low pressure UV-C ultraviolet disinfection system

316L stainless steel housing, 16,000 hour lamp life.



| | Code | Unit Price Euro |
|--------------------------------|----------------------|-----------------|
| INOX 400-204 2X200 W 85 m3/h | INOX 400-204 | LFS |
| INOX 400-168 3X140 W 49 m3/h | INOX 420-168 | 8,525.00 |
| INOX 600-219 3X200 W 133 m3/h | INOX 600-219 | LFS |
| INOX 975-306 3X325 W 531 m3/h | INOX 975-306 | LFS |
| INOX 1950-306 6X325 W 531 m3/h | INOX 1950-306 | LFS |

INOX LOW PRESSURE UV LAMP SYSTEMS

PRO INOX series features a 316 L stainless steel body and a lamp life of 16,000 hours.



| | Code | Unit Price Euro |
|---|---------------------|-----------------|
| INOX 40-76.40 W 3 m3/h | INOX 40-76 | 3,640.00 |
| INOX 75-76.75 W 12 m3/h | INOX 75-76 | 3,830.00 |
| INOX 140-76, 140 W 12 m3/h | INOX 140-76 | 4,300.00 |
| INOX 75-114.75 W 22 m ³ /h | INOX 75-114 | 4,800.00 |
| INOX 140-114 140 W 22 m ³ /h | INOX 140-114 | 4,700.00 |
| INOX 200-76,200 W 22 m3/h | INOX 200-76 | 5,150.00 |
| INOX 200-154,200 W 37 m3/h | INOX 200-154 | 7,430.00 |
| INOX 400-54,400 W 5.5 M3/h | INOX 400-54 | LFS |
| INOX 400-76,400 W 22 m3/h | INOX 400-76 | LFS |

INOX OPT1GUARD UV SYSTEMS1

316L stainless steel housing, pressure resistant up to 12 Bar, 16,000 hours lamp life, IP 67 protection.



| | Code | Unit Price Euro |
|-------------------------------------|-----------------------|-----------------|
| OPTIGUARD 2.4 ,191 M3/h ,6X400 W | Optiguard 2.4 | LFS |
| OPTIGUARD 4.0 ,339 M3/h ,10X400 W | Optiguard 4.0 | LFS |
| OPTIGUARD 7.2 ,530 M3/h ,18X400 W | Optiguard 7.2 | LFS |
| OPTIGUARD 9.6 ,763 M3/h ,24X400 W | Optiguard 9.6 | LFS |
| OPTIGUARD 13.6, 1727 M3/h, 34X400 W | Optiguard 13.6 | LFS |



Blue lagoon
UV-C and Pool equipment

HDPE LOW PRESSURE UV SYSTEMS

HDPE low pressure UV systems

316L stainless steel housing, 16,000 hour lamp life.

| | Code | Unit Price Euro |
|-------------------------------------|-------------------|-----------------|
| HDPE 40-75 SUT 12 m3/h, 1x40 W | HDPE 40-75 SUT | 1,740.00 |
| HDPE 80-75 SUT 12 m3/h, 1x80 W | HDPE 80-75 SUT | 1,970.00 |
| HDPE 75-110 SUT 22 m3/h, 1x75 W | HDPE 75-110 SUT | 2,680.00 |
| HDPE 140-110 SUT 22 m3/h, 1x140 W | HDPE 140-110 SUT | 3,160.00 |
| HDPE 200-110 SUT 22 m3/h, 1x200 W | HDPE 200-110 SUT | 3,440.00 |
| HDPE 200-160 SUT 37 m3/h, 1x200 W | HDPE 200-160 SUT | 3,840.00 |
| HDPE 400-200 SUT 79 m3/h, 2x200 W | HDPE 400-200 SUT | 5,800.00 |
| HDPE 600-225 SUT 129 m3/h, 3x200 W | HDPE 600-225 SUT | 7,540.00 |
| HDPE 975-315 SUT 445 m3/h, 3x325 W | HDPE 975-315 SUT | 14,480.00 |
| HDPE 1950-315 SUT 445 m3/h, 6x325 W | HDPE 1950-315 SUT | 18,750.00 |





ELECR POOL WATER ELECTRIC HEATERS

Electro Evolution 2 (Complete Titanium) electric pool water heater 1s1t1c1s1

Its housing is made of titanium. AK1, flow sensor and mounting parts together with the control panel The minimum flow rate is 1 m³/h for devices between 3-6 kW and 4 m³/h for devices between 9-24 kW. The maximum flow rate is 17 m³/h.

Recommended flow rate: 10 m³/h

Supplied with connection elements (1 1/2").

Working pressure 4 bar.

It can be mounted vertically or horizontally.

| Analog Control | Code | Unit Price Euro |
|--------------------------------|----------|-----------------|
| 6 kW Single-Phase/Three-Phase | E2-V-6 | 1,045.00 |
| 9 kW Single-Phase/Three-Phase | E2-V-9 | 1,080.00 |
| 12 kW Single-Phase/Three-Phase | E2-V-12 | 1,090.00 |
| 15 kW Three-Phase | E2-3-15 | 1,100.00 |
| 18 kW Three-Phase | E2-3-18 | 1,200.00 |
| 24 kW Three-Phase | E2-3-24 | 1,275.00 |
| Digital Control | Code | Unit Price Euro |
| 15 kW Three-Phase | E2-D3-15 | 1,360.00 |
| 18 kW Three-Phase | E2-D3-18 | 1,500.00 |
| 24 kW Three-Phase | E2-D3-24 | 1,550.00 |

Electro Flow Line 2 (Complete Titanium) Analog Controlled Electric Pool Water Fluid 1s1t1c1s1

The minimum flow rate is 1 m³/h for devices between 3-6 kW and 4 m³/h for devices between 9-24 kW. The maximum flow rate is 17 m³/h.

Recommended flow rate: 10 m³/h

Supplied with connection elements (1 1/2").

Working pressure 4 bar.

It can be mounted vertically or horizontally. Requires an external control panel.

| Titanium element 1s1t1c1 | Code | Unit Price Euro |
|--------------------------|----------|-----------------|
| 6 kW three-phase | FL2-3-6 | 680.00 |
| 9 kW three-phase | FL2-3-9 | 695.00 |
| 9 kW single-phase | FL2-1-9 | 695.00 |
| 12 kW three-phase | FL2-3-12 | 705.00 |
| 15 kW three-phase | FL2-3-15 | 720.00 |
| 18 kW three-phase | FL2-3-18 | 730.00 |
| 24 kW three-phase | FL2-3-24 | 775.00 |

POOL WATER HEATING

ELECR
ENGINEERING



ELECR POOL WATER ELECTRIC HEATERS

Optima Compact digital display electric pool water heater 1s1t1c1s1

Titanium or custom ala_1m optional heating element. Titanium housing.

The minimum flow rate is 1 m³/h for 3-6 kW and 4 m³/h for 9-24 kW. The maximum flow rate is 17 m³/h.

The touch control panel is mounted on the housing. It is shipped with mounting hardware (1 1/2").

| Titanium element 1s1t1c1 | Code | Unit Price Euro |
|---|-----------|-----------------|
| 6kW single-phase/three-phase, titanium | OCPD-V-6 | 1,570.00 |
| 9kW single-phase/three-phase, titanium | OCPD-V-9 | 1,600.00 |
| 12kW single-phase/three-phase, titanium | OCPD-V-12 | 1,635.00 |
| 15kW three-phase, titanium | OCPD-3-15 | 1,660.00 |
| 18kW triase, titanium | OCPD-3-18 | 1,755.00 |
| 24kW three-phase, titanium | OCPD-3-24 | 1,800.00 |

Titan Optima digital display (titanium) electric pool water heater 1s1t1c1s1

Complete titanium (1 heating element + 1 flow tube), Minimum flow rate 12 m³/h, Maximum flow rate 45 m³/h, Recommended flow rate 30 m³/h, Thermostat 1 x 60pC, with auto reset, Thermostat 1 x 55pC, with manual reset, Smart touchscreen 0-45pC (with 0.5pC difference), Connection parts included: D63 fitting and 2" adapter.

| Titanium element 1s1t1c1 | Code | Unit Price Euro |
|--------------------------|-----------|-----------------|
| 18kW three-phase | CP-TS-18 | 3,250.00 |
| 24kW three-phase | CP-TS-24 | 3,300.00 |
| 30kW three-phase | CP-TS-30 | 3,375.00 |
| 36kW three-phase | CP-TS-36 | 4,050.00 |
| 45kW three-phase | CP-TS-45 | 4,200.00 |
| 54kW three-phase | CP-TS-54 | 4,325.00 |
| 60kW three-phase | CP-TS-60 | 4,500.00 |
| 72kW three-phase | CP-TS-72 | 5,500.00 |
| 96kW three-phase | CP-TS-96 | 7,000.00 |
| 120kW three-phase | CP-TS-120 | 8,700.00 |



ELECR POOL WATER EXCHANGERS1

Elecr G2 Titanium pool water 1s1 e_exchanger

The serpentine coil is made of titanium, and the flow tube is made of AISI-316 stainless steel. Ideal for saltwater. Maximum working pressure: 4 bar. Primary connection = 1" external thread (with brass fittings). Secondary connection = 1 1/2" or 50-mm PVC pipe connection inlet. Supplied with connection elements.

| Titanium element 1s1t1c1 | Code | Unit Price Euro |
|--------------------------|------------|-----------------|
| 30 kW | G2-HE-30T | 530.00 |
| 49 kW | G2-HE-49T | 690.00 |
| 85 kW | G2-HE-85T | 820.00 |
| 122 kW | G2-HE-122T | 1,040.00 |



Elecr G2I Special Ala_1m pool water 1s1 e_exchanger

The heating element is Incoloy B25, the flow pipe is made of AISI-316 stainless steel. Maximum working pressure: 4 bar. Primary connection = 1" external thread (with brass fittings), Secondary connection = 1 1/2" or 50-mm PVC pipe connection inlet. Supplied with connection elements.

| Special Ala_1m 1s1t1c1 element (S/S) | Code | Unit Price Euro |
|--------------------------------------|-----------|-----------------|
| 85 kW | G2I-HE-85 | 580.00 |

Notes: limited stock available .



POOL WATER HEATING

POOL WATER EXCHANGERS1 (WATER/WATER)

Economical plate heat exchangers (water/water)

Made of AISI-316 stainless steel.



| | Code | Unit Price Euro |
|---------------|----------|-----------------|
| 35,000 kcal. | GC-08x8 | 650.00 |
| 50,000 kcal. | GC-08x10 | 700.00 |
| 60,000 kcal. | GC-08x12 | 740.00 |
| 90,000 kcal. | GC-08x14 | 800.00 |
| 120,000 kcal. | GC-08x18 | 900.00 |
| 150,000 kcal. | GC-08x24 | 1,040.00 |
| 180,000 kcal. | GC-08x28 | 1,140.00 |
| 200,000 kcal. | GC-08x32 | 1,225.00 |
| 250,000 kcal. | GC-30x24 | 1,470.00 |
| 300,000 kcal. | GC-30x26 | 1,590.00 |
| 350,000 kcal. | GC-30x27 | 1,700.00 |
| 500,000 kcal. | GC-30x30 | 2,080.00 |
| 700,000 kcal. | GC-30x40 | 2,300.00 |

Super economical stainless steel 1s1 e-exchangers (water/water)

Stainless steel pipe-type heat exchangers. Hot water inlet and outlet diameters 1", pool water inlet and outlet diameters 2".



| | Code | Unit Price Euro |
|-------|-------|-----------------|
| 28kW | MF80 | 300.00 |
| 40kW | MF135 | 330.00 |
| 60kW | MF200 | 380.00 |
| 75kW | MF260 | 410.00 |
| 120kW | MF400 | 725.00 |

INDOOR SWIMMING POOL DEHUMIDIFIERS



DEHUMIDIFIERS

Aquarambla Dehumidifiers for Indoor Pools

Automatic defrost, R410A refrigerant, rotary compressor, operating temperature 15-35°C. Control device 1 and remote control are included in the package.

| | Code | Unit Price Euro |
|---------------|----------------|-----------------|
| 75 kg / 24 h | MDH75A | 4,500.00 |
| 125 kg / 24 h | MDH125A | 5,300.00 |
| 170 kg / 24 h | MDH170A | 6,200.00 |



| Technical Specifications | MDH75A | MDH125A | MDH170A |
|--|-----------------|------------------|------------------|
| Dehumidification capacity @ 30 oC/70%RH kg/24h | 75 | 125 | 170 |
| Recovered 1s1 @ 30 oC/70%RH kW | 3.2 | 5 | 8.2 |
| Noise level dB(A) | 48 | 50 | 52 |
| Air circulation capacity m3/h | 600 | 1200 | 1800 |
| Energy supply V / PH / Hz | 220 / 1 / 50 | 220 / 1 / 50 | 220 / 1 / 50 |
| Operating power kW | 1.30 | 2.00 | 2.92 |
| Nominal operating current A | 5.9 | 9.1 | 13.3 |
| Maximum current drawn: A | 25 | 42 | 63 |
| Yo u_ma water discharge diameter 1 mm OD | 16 | 16 | 16 |
| Dimensions in mm | 905 x 243 x 673 | 1288 x 243 x 673 | 1672 x 243 x 673 |

OL1MP1K POOL EQUIPMENT

SUPER ECONOMIC OLYMPIC POOL DIVING PODIUMS

Super economical jumping platforms¹ (adjustable)

500x500 platform made of polyester and fiberglass with a non-slip surface. It sits on top of the hull. Anchor connections and numbers are not included.



| AISI 304 | Code | Unit Price Euro |
|----------------|---------|-----------------|
| Height: 400 mm | 00145-Y | 850.00 |
| Height: 700 mm | 00144-Y | 950.00 |

| AISI 316 | Code | Unit Price Euro |
|----------------|------------|-----------------|
| Height: 400 mm | 00145316-Y | 1,000.00 |
| Height: 700 mm | 00144316-Y | 1,200.00 |

Super economical jumping podiums¹ (fixed)

A 500 x 500 fiberglass and polyester platform with a non-slip surface, sitting on top of the fuselage (numbers not included).



| AISI 304 | Code | Unit Price Euro |
|--------------------|---------------|-----------------|
| 500 x 500 x 450 mm | PS101 (SS304) | 650.00 |
| 633 x 500 x 650 mm | PS201 (SS304) | 650.00 |

| AISI 316 | Code | Unit Price Euro |
|--------------------|---------------|-----------------|
| 500 x 500 x 450 mm | PS101 (SS316) | 825.00 |
| 633 x 500 x 650 mm | PS201 (SS316) | 925.00 |

SUPER ECONOMICAL RESCUE EQUIPMENT

Super economical lifeguard seat

It is manufactured from Ø 43 mm pipe. The steps and seat are made of plastic, and it comes with a life buoy and sunshade attachment system. Maximum load capacity is 100 kg.

| AISI 304 | Code | Unit Price Euro |
|-----------------|---------|-----------------|
| Height: 1800 mm | C-56993 | 1,350.00 |

| AISI 316 | Code | Unit Price Euro |
|-----------------|---------|-----------------|
| Height: 1800 mm | C-56994 | 1,450.00 |

Super economical lifebuoy

Lifebuoy made of styrofoam.



| | Code | Unit Price Euro |
|--------------------------|--------|-----------------|
| 21" (54 cm) White color | SR01BU | 55.00 |
| 30" (76 cm) Orange color | SR04 | 85.00 |

The science of super-economic life-saving.

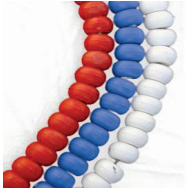
| | Code | Unit Price Euro |
|-----------------------------------|---------|-----------------|
| Made of AISI-304 stainless steel. | ALH01BU | 50.00 |



OL1MP1K POOL EQUIPMENT

SUPER ECONOMICAL SEPARATORS

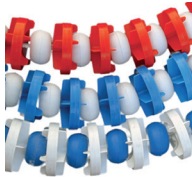
Super economical Roma model separator



Roman type separator parts are arranged on a plastic cord.

| Roma model separator | Code | Unit Price Euro |
|----------------------|---------|-----------------|
| 25 m Red - White | 67620-Y | 360.00 |
| 50 m Red - White | 67622-Y | 700.00 |

Super economical Seoul model separator



Seoul type separator parts are arranged on a plastic rope.

| Seoul model separator with plastic cord | Code | Unit Price Euro |
|---|---------|-----------------|
| 25 m Red - White | 00196-E | 700.00 |
| 50 m Red - White | C-67002 | 1,350.00 |

Super economical Moscow model separator

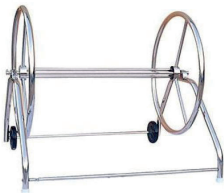


Moscow type separator parts are arranged on a plastic cord.

| Moscow model separator | Code | Unit Price Euro |
|------------------------|---------|-----------------|
| 25 m Red - White | 67625-Y | 750.00 |
| 50 m Red - White | 00192-Y | 1,450.00 |

SUPER ECONOMY 1K LANE WINDING CART

Super economic lane sarg1 arabas1



It is made of stainless steel. It has 2 wheels for easy transport and a brake system for securing it in place.

| AISI 304 | Code | Unit Price Euro |
|---------------|---------|-----------------|
| Length: 1.2 m | C-58860 | 1,500.00 |
| Length: 1.8 m | C-58859 | 1,800.00 |

OL1MP1K POOL EQUIPMENT

ECONOMIC ANCHORS

Economical hook1



It is used with a flat anchor. It is manufactured from AISI-304 stainless steel.

| Ø 42 mm | Code | Unit Price Euro |
|----------------------|---------|--------------------|
| Surface hanger hook1 | 00140-Y | 57.00 |

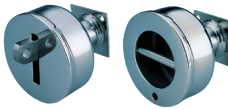
Economical flat/equal anchors



Zurich-Wiesbaden It is manufactured from AISI-304 for the system.

| | Code | Unit Price Euro |
|-----------------------------|---------|--------------------|
| For Ø 43 mm pipe (Straight) | 00141-Y | 57.00 |
| For Ø 43 mm pipe (E ik) | 00142-Y | 57.00 |

Economical AISI 304 anchor



It is manufactured from AISI 304 stainless steel.

| Wall type | Code | Unit Price Euro |
|------------------------------------|---------|--------------------|
| For concrete pools, flat anchors. | 00143Y | 74.00 |
| For concrete pools, ask111 anchor. | 00143YY | 74.00 |

ECONOMIC SEPARATOR TENSIONERS

Economic spiral1 separator tensioner



It is manufactured from AISI 304 stainless steel.

| Spiral1 separator tensioner | Code | Unit Price Euro |
|-----------------------------|---------|--------------------|
| Spiral1 tensioner | C-00207 | 130.00 |

Economical screw separator tensioner



It is manufactured from AISI 304 stainless steel.

| Vidal1 separator tensioner | Code | Unit Price Euro |
|----------------------------|---------|--------------------|
| Vidal1 tensioner | C-01468 | 85.00 |

Economical flat separator hook1



It is manufactured from AISI 304 stainless steel.

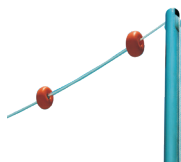
| Flat hook for separator | Code | Unit Price Euro |
|-------------------------|---------|--------------------|
| Flat hook | 00207-Y | 22.00 |

OL1MP1K POOL EQUIPMENT

SUPER ECONOMIC SEMI-EXCAVATED SYSTEMS

Super economical side jump warning set

It consists of two 1.8m high stainless steel pipes (AISI-304 grade). It is supported by excavation balls. Anchors are not included in the price.



| | Code | Unit Price Euro |
|--|-------------|--------------------|
| For a pool width of 12.5 m, 2 x Ø43 mm pipes and warning balls included. | 19954L125-Y | 250.00 |
| For a pool width of 25 m. Ø43 mm. Includes 2 pipes and warning balls. | 19954L250-Y | 325.00 |

Super economical return warning kit

It is manufactured from two 1.8 m high pipes (AISI-304 grade) of stainless steel. Anchors are not included in the price.



| | Code | Unit Price Euro |
|---|-------------|--------------------|
| For a pool with a width of 12.5 m, 2 pieces of Ø43 mm pipes and warning flags are included. | 19955L125-Y | 320.00 |
| For a pool width of 25 m. Ø43 mm. 2 pipes and warning flags included. | 19955L250-Y | 400.00 |

Super economical rotating panels

300 mm high panel made of AISI-304 stainless steel. Panel support is not included.



| | Code | Unit Price Euro |
|---------------|---------|--------------------|
| Length: 2 m | 00137-Y | 510.00 |
| Length: 2.5 m | 00138-Y | 620.00 |

Super economical rotating panel support.

AISI-304 stainless steel panel support piece for use with necessary anchors. Anchors are not included in the price.



| | Code | Unit Price Euro |
|--|---------|--------------------|
| <small>Please specify when placing your order. Specify the dimensions using "L" and "H".</small> | 00139-Y | 375.00 |

OLIMPIC POOL EQUIPMENT



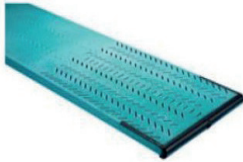
ALUMINUM JUMPING TRAINS

Aluminum diving boards are made from a single piece of heat-treated aluminum alloy extrusion. A torsional stabilizing insert is added to the base. The boards are coated with a non-slip surface. Pools where these diving boards will be installed must have dimensions conforming to FINA standards.

Maxi ex - Model B

The 16' Maxiflex model B (also called Maxi-B) is a springboard used in all major competitive branch events worldwide.

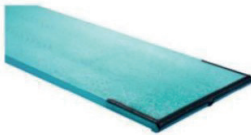
The 16' Maxi-B tapers and narrows from the balance point to the tip of the dive. Its tapered structure allows the board to curve during flexing, increasing the bounce effect. What sets the Maxi-B apart from other models is that the board has 189 grooves at the tip.



| | Code | Unit Price Euro |
|-------------------|------------|-----------------|
| L = 40.6 cm (16') | 66-231-330 | LFS |

Dura ex

Duraflex is used in recreational swimming pools in commercial pools with dimensions conforming to FINA standards. Duraflex tapers and narrows from the balance point towards the tip of the board.

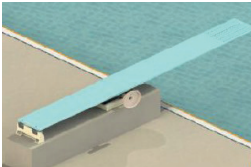


| | Code | Unit Price Euro |
|-------------------|------------|-----------------|
| L = 40.6 cm (16') | 66-231-326 | LFS |

Short Platforms

The Duraflex short platform is designed to provide a solid foundation for mounting Duraflex aluminum jump boards. It is designed to be mounted to your concrete foundation.

The platform consists of a short iron frame and a support structure. The main components are heavy-duty aluminum castings coated with the highest quality epoxy powder paint.



| | Code | Unit Price Euro |
|------------|------------|-----------------|
| Sleeveless | 70-231-524 | LFS |
| Sleeved | 70-231-520 | LFS |



EQUIPMENT FOR ORNAMENTAL FOUNTAINS

ORNAMENTAL POND NOZZLES

Komet Water Jet Nozzles1 (Chrome Plated on Sar1)



| | Entrance | Code | Unit Price Euro |
|---------|----------|------------|--------------------|
| 3/6 T | 3/8" | FKOM3/6T | 22.00 |
| 5/8 T | 1/2" | FKOM5/8T | 40.00 |
| 8/10 T | 3/4" | FKOM8/10T | 30.00 |
| 10/12 T | 1" | FKOM10/12T | 46.00 |
| 15/17 T | 1 1/2" | FKOM15/17T | 85.00 |
| 20/20 T | 2" | FKOM20/20T | 130.00 |

Geyser Water Foam Nozzles1 (Stainless Steel)



| | Entrance | Code | Unit Price Euro |
|-------|----------|-------------|--------------------|
| 20 T | 1" | FGAYZER20T | 70.00 |
| 40 T | 1 1/2" | FGAYZER40T | 82.00 |
| 60 T | 2" | FGAYZER60T | 110.00 |
| 80 T | 2 1/2" | FGAYZER80T | 200.00 |
| 100 T | 3" | FGAYZER100T | 260.00 |

Cascade Water Foam Nozzles1 (Sar1 Cast Iron)



| | Entrance | Code | Unit Price Euro |
|------|----------|-----------|--------------------|
| 50 T | 1" | FKASPIR50 | 72.00 |
| 70 T | 2 1/2" | FKASPIR70 | 120.00 |
| 90 T | 2" | FKASPIR90 | 160.00 |

Ringing Cascade Nozzles1 (Stainless Steel)



| | Entrance | Code | Unit Price Euro |
|-------|----------|---------|--------------------|
| 50 T | 1" | FKAS50 | 50.00 |
| 70 T | 1 1/2" | FKAS70 | 60.00 |
| 90 T | 2" | FKAS90 | 90.00 |
| 110 T | 2 1/2" | FKAS110 | 150.00 |
| 130 T | 3" | FKAS130 | 210.00 |

EQUIPMENT FOR ORNAMENTAL FOUNTAINS

ORNAMENTAL POND NOZZLES

_Champagne Foam Nozzles (Stainless Steel)



| | Login. | Code | Unit Price Euro |
|--------|--------|------------|--------------------|
| 35-10E | 1" | F_AM35-10E | 35.00 |
| 55-10E | 1" | F_AM55-10E | 82.00 |
| 55-15E | 1 1/2" | F_AM55-15E | 85.00 |
| 75-20E | 2" | F_AM75-20E | 470.00 |

_Champagne Foam Nozzles (Sar1 Casting)



| | Login. | Code | Unit Price Euro |
|--------|--------|-------------|--------------------|
| 20-10E | 1/2" | F_AMS20-10E | 75.00 |
| 25-10E | 3/4" | F_AMS25-10E | 105.00 |
| 30-10E | 1" | F_AMS30-10E | 155.00 |
| 55-15E | 1 1/2" | F_AMS55-15E | 410.00 |

Film Fountain



| | Login. | Code | Unit Price Euro |
|-----------|--------|--------|--------------------|
| Stainless | 1" | FF1LMP | 120.00 |

Water Foam Nozzles (Stainless Steel)



| | Login. | Code | Unit Price Euro |
|-------|--------|---------|--------------------|
| 744 P | 1" | FSUKÖP4 | 130.00 |
| 746 P | 1 1/2" | FSUKÖP6 | 165.00 |
| 747 P | 2" | FSUKÖP7 | 200.00 |

Finger Fan Fountain



| | Login. | Code | Unit Price Euro |
|-----------------------------|--------|------------|--------------------|
| Stainless Steel 7 Piece Set | 1" | FLD7FAN | 160.00 |
| Brass casting set of 9 | 1" | FLDYELPAZE | 185.00 |

EQUIPMENT FOR ORNAMENTAL FOUNTAINS

ORNAMENTAL POND NOZZLES

Water Bell Nozzles (Stainless Steel)



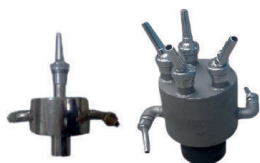
| | Login | Code | Unit Price Euro |
|----------|-------|-------------|-----------------|
| 30-10 T | 1" | FSUC30-10T | 110.00 |
| 45-10 T | 1" | FSUC45-10T | 120.00 |
| 60-10 T | 1" | FSUC60-10T | 135.00 |
| 110-10 T | 1" | FSUC110-10T | 150.00 |

Volcano Nozzle

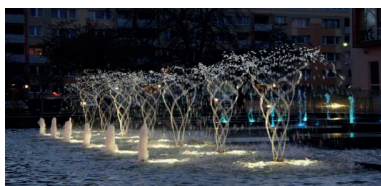


| | Login | Code | Unit Price Euro |
|------|-------|------|-----------------|
| Rice | 1" | VF1P | 180.00 |
| Rice | 1" | VF1 | 350.00 |

Rotary Type Nozzle (Stainless Steel)



| | Login | Code | Unit Price Euro |
|-----------|--------|-------|-----------------|
| One-armed | 1 1/2" | FDÖN1 | 160.00 |
| 5 arms | 1 1/2" | FDÖN4 | 240.00 |
| 6 arms | 1 1/2" | FDÖN6 | 260.00 |



EQUIPMENT FOR ORNAMENTAL FOUNTAINS



PHOSPAT® CARTRIDGE FILTERS

PHOSPAT® CIO cartridge filter (reduces free chlorine in water)

PHOSPAT® CIO reduces free chlorine in water. It reduces free chlorine in standard pools. Suitable for natural swimming pools, ponds and recirculation wells. Flow rate up to 1,100 l/h. Particle dispersion in layers is ensured. More units can be combined to supply larger water volumes. Two 3/4 inch connections, maximum operating pressure is 4 bar.

Filter Design1

PHOSPAT® CIO cartridges contain activated carbon, and the size design of PHOSPAT® CIO is engineered for quick and safe release from chlorinated water.

Assembly

Connect one end of the cartridge to your house's water line (with a flexible hose), and connect the other end to the section that carries water back to the pool.

Recommendation

PHOSPAT® CIO can be connected to your house or garden water line, so you can remove free chlorine directly from your filling or supply water.

| | Code | Unit Price Euro |
|--------------|--------------|--------------------|
| PHOSPAT® CIO | MBCIO | 650.00 |

PHOSPAT® cartridge filters (prevent the formation of phosphate in water)



It reduces phosphate in water and supports biofilters or sand filters. Suitable for pools, ponds, fountains, and circulation wells. Adsorption capacity of approximately 90,000 mg PO43-/cartridge. Several PHOSPAT cartridges can be added for large volumes of water. Two 1" connections, maximum operating pressure 4 bar.

Filter Design1

The granules used are specifically designed for phosphate binding. They consist of a three-layered bed. A phoslamin layer is located between the two outer layers. These layers also ensure a smooth flow. Due to its unique composition, the phosphate binds tightly in a short time.

Assembly

Connect one end of the pipe to the flow section of pre-filtered recirculating water (flow rate up to 1100 l/h) and connect the other end of the pipe to the pipe supplying the water reservoir.

Recommendation

Because large impurities can clog PHOSPAT® 81, the water must be pre-filtered and cleaned. This ensures the effective operation of PHOSPAT® 81. You can pump the water coming out of the filter into PHOSPAT® 81 using a suitable pump.



| | Code | Unit Price Euro |
|-----------------------------|--------------|--------------------|
| PHOSPAT® 1 (1,100 lt/h) | MB576 | 2,000.00 |
| PHOSPAT® 3 (3,300 lt/h) | MB577 | 4,700.00 |
| PHOSPAT® 10-15 (6,000 lt/h) | MB578 | 13,400.00 |

EQUIPMENT FOR ORNAMENTAL FOUNTAINS

Messner
MOVES WATER...



MESSNER DECORATIVE POND EQUIPMENT

pond pump

Flow rate control valve with height control, ideal for use in ornamental ponds, includes 3 nozzles (bell, volcano, ring jet), 7.5 m cable. It has a fine foam filter to protect the nozzles from dirt. Operates on 12V - 50Hz power supply.



| | Code | Unit Price Euro |
|---|------------|-----------------|
| M 800 - 12V - h _{max} : 1.3 m, 14 W | 186/001390 | 220.00 |
| M 1200 - 12V - h _{max} : 1.8 m, 20 W | 186/001391 | 240.00 |
| M 1600 - 12V - h _{max} : 2.2 m, 25 W | 186/001392 | 250.00 |

eco-X2 pond pump1

Second generation energy-efficient single-phase pond pump with improved suction/discharge flow rates. Includes 10m cable. Comes with 230V/50Hz connection adapters; inlet and outlet connections are externally threaded. Nozzles are not included.



| | Code | Unit Price Euro |
|--------------|------------|-----------------|
| eco-X2 4500 | 156/005000 | 650.00 |
| eco-X2 7500 | 156/005001 | 950.00 |
| eco-X2 10000 | 156/005002 | 1,030.00 |
| eco-X2 13000 | 156/005003 | 1,210.00 |
| eco-X2 16000 | 156/005004 | 1,450.00 |

| Technical Specifications | 4500 | 7500 | 10000 | 13000 | 16000 |
|--------------------------|-----------------------|-----------------------|----------------------|------------------------|------------------------|
| Flow | 4.9 m ³ /h | 7.3 m ³ /h | 11 m ³ /h | 12.6 m ³ /h | 15.4 m ³ /h |
| Strength | 48 W | 75 W | 110 W | 140 W | 190 W |
| Head pressure | 3.1 m | 4.0 m | 5.4 m | 5.5 m | 5.8 m |
| Protection class 1 | IP 68 | IP 68 | IP 68 | IP 68 | IP 68 |
| Login - Exit | 1 ¼" | 1 ¼" | 1 ½" | 1 ½" | 1 ½" |
| Maximum temperature | 35 pC | 35 pC | 35 pC | 35 pC | 35 pC |

EQUIPMENT FOR ORNAMENTAL FOUNTAINS



top press



side press

2 different pressing direction options



Stronger circulation

MESSNER DECORATIVE POND EQUIPMENT

eco-X2 plus pond pump1

Second generation energy-efficient single-phase pond pump with improved suction/discharge flow rates. It has a 10 meter cable. Includes 230V/50Hz connection adapters; inlet and outlet connections are external.

| | Code | Unit Price Euro |
|-------------------|------------|-----------------|
| eco-X2 plus 10000 | 156/005006 | 900.00 |
| eco-X2 plus 15000 | 156/005007 | 1300.00 |

| Technical Specifications | 1000 | 1500 |
|--------------------------|-----------------------|------------------------|
| Flow | 9.9 m ³ /h | 14.7 m ³ /h |
| Strength | 60 W | 105 W |
| Head pressure | 2.40 m | 3.20 m |
| Protection class 1 | IP 68 | IP 68 |
| C1k1_ | 1½= | 1½= |
| Maximum temperature | 35 pC | 35 pC |

power-X2 pond pump1

X-Design high-performance pump for high-pressure clear water applications. Single-phase, 230V / 50Hz, includes connection adapters, inlet and outlet connections are externally threaded. It has a 10 meter cable.



| | Code | Unit Price Euro |
|----------------|------------|-----------------|
| power-X2 4000 | 156/005040 | 750.00 |
| power-X2 6000 | 156/005041 | 800.00 |
| power-X2 8000 | 156/005042 | 1,075.00 |
| power-X2 10000 | 156/005043 | 1,180.00 |
| power-X2 14000 | 156/005044 | 1,400.00 |

| Technical Specifications | 4000 | 6000 | 8000 | 10000 | 14000 |
|--------------------------|-----------------------|-----------------------|-----------------------|------------------------|------------------------|
| Flow | 4.1 m ³ /h | 6.2 m ³ /h | 8.1 m ³ /h | 10.0 m ³ /h | 14.0 m ³ /h |
| Strength | 80 W | 100 W | 150 W | 190 W | 280 W |
| Head pressure | 4.5 m | 6.0 m | 65 m | 7.0 m | 8.0 m |
| Dimensions (mm) | 360 x 270 x 180 | 360 x 270 x 180 | 360 x 270 x 180 | 360 x 270 x 180 | 360 x 270 x 180 |
| Login - Exit | 1 ¼= | 1 ¼= | 1 ¼= | 1 ¼= | 1 ¼= |
| Diameters | Ø 32/40 | Ø 32/40 | Ø 32/40 | Ø 32/40 | Ø 32/40 |

EQUIPMENT FOR ORNAMENTAL FOUNTAINS



In small ponds suitable for use 1m¹

MESSNER DECORATIVE POND EQUIPMENT

System-X Pond Pump

High-performance pumps for small waterfalls, ornamental ponds, and filtration. Single-phase, 230V / 50Hz. Includes connection adapters and 3 sprinkler nozzles (bell, volcano, ring jet), with external inlet and outlet connections. 10 meters of cable.

| | Code | Unit Price Euro |
|---------------|------------|-----------------|
| system-X 750 | 156/001375 | 200.00 |
| System-X 1000 | 156/001376 | 230.00 |
| system-X 1501 | 156/001377 | 275.00 |
| System-X 3000 | 156/001379 | 350.00 |
| System-X 4000 | 156/001380 | 435.00 |

| Technical Specifications | 750 | 1000 | 1501 | 3000 | 4000 |
|--------------------------|-----------------------|-----------------------|-----------------------|-----------------------|-----------------------|
| Flow | 0.8 m ³ /h | 1.1 m ³ /h | 1.5 m ³ /h | 3.0 m ³ /h | 4.0 m ³ /h |
| Strength | 15 W | 18 W | 30 W | 45 W | 60 W |
| Head pressure | 1.3 m | 1.5 m | 2.1 m | 2.7 m | 2.9 m |
| Dimensions (mm) | 165 x 140 x 105 | 165 x 140 x 105 | 165 x 140 x 105 | 205 x 165 x 130 | 205 x 165 x 130 |
| Login - Exit | ½" | ½" | ½" | ¾" | ¾" |
| Diameters | | | Ø 25 | Ø 32 | Ø 32 |

Transformers for Pond Pumps

Power supply 230 V / 50 Hz, IP-44 protection class.



| | Code | Unit Price Euro |
|-------------|------------|-----------------|
| 1W - 20W | 186/002986 | 140.00 |
| 21 W - 50 W | 186/002987 | 165.00 |

Messner Equipment1



| | Code | Unit Price Euro |
|-----------------------------------|------------|-----------------|
| 1/2" Volcano jet nozzle head | 106/000475 | 10.00 |
| Connection adapter for F1skiyeler | 104/000447 | 13.00 |
| 1" - 1/2" reduction for F1 skis. | 104/000564 | 15.00 |
| 1/2" Calyx jet nozzle ba_11 1 | 106/000659 | 21.00 |
| 1/2" Bell Sprinkler Nozzle head 1 | 104/001520 | 32.00 |

EQUIPMENT FOR ORNAMENTAL FOUNTAINS



Energy saving:
patented fan



Play very quietly



0-100% adjustable
3-way manifold

MESSNER DECORATIVE POND EQUIPMENT

eco-Tec2 pump

High-efficiency built-in pump suitable for use with filters in streams and similar applications. Comes with a special stand for mounting outside the pond. Not suitable for operation underwater. Includes a 10-meter cable.

| | Code | Unit Price Euro |
|----------------|------------|-----------------|
| eco-Tec2 7500 | 156/005021 | 800.00 |
| eco-Tec2 10000 | 156/005022 | 955.00 |
| eco-Tec2 13000 | 156/005023 | 1.12500 |
| eco-Tec2 16000 | 156/005024 | 1,240.00 |
| eco-Tec2 20000 | 156/005025 | 1,800.00 |

| Technical Specifications | 7500 | 10000 | 13000 | 16000 | 20000 |
|--------------------------|-----------------------|----------------------|------------------------|------------------------|------------------------|
| Flow | 7.3 m ³ /h | 11 m ³ /h | 12.6 m ³ /h | 15.4 m ³ /h | 19.6 m ³ /h |
| Strength | 75 W | 110 W | 140 W | 190 W | 205 W |
| Head pressure | 4.0 m | 5.4 m | 5.5 m | 5.8 m | 5.5 m |
| Electrical connection | 230 V / 50 Hz | 230 V / 50 Hz | 230 V / 50 Hz | 230 V / 50 Hz | 230 V / 50 Hz |
| Dimensions (mm) | 230 x 145 x 192 | 230 x 145 x 192 | 230 x 145 x 192 | 230 x 145 x 192 | 230 x 145 x 192 |
| Login - Exit | 1 ¼" | 1 ½" | 1 ½" | 1 ½" | 2" |
| Diameters | Ø 32/40 | Ø 40/50 | Ø 40/50 | Ø 40/50 | Ø 50/63 |

system-Tec built-in pump

Flexible design and particularly suitable for various natural composite applications. Compact dimensions, very quiet operation, and adjustable three-way manifold. It has a 10-meter cable.

| | Code | Unit Price Euro |
|-----------------|------------|-----------------|
| system-Tec 1000 | 156/005080 | 240.00 |
| System-Tec 2000 | 156/005081 | 310.00 |
| system-Tec 3000 | 156/005082 | 345.00 |

| Technical Specifications | 1000 | 2000 | 3000 |
|--------------------------|-----------------------|-----------------------|-----------------------|
| Flow | 1.2 m ³ /h | 2.1 m ³ /h | 3.2 m ³ /h |
| Strength | 25 W | 45 W | 55 W |
| Head pressure | 1.80 m | 2.50 m | 2.55 m |
| Electrical connection | 230 V / 50 Hz | 230 V / 50 Hz | 230 V / 50 Hz |
| Dimensions (mm) | 126 x 90 x 117 | 126 x 90 x 117 | 180 x 110 x 138 |
| C1k1_ | ½" | ½" | ¾" |
| Diameters | Ø 20/25 | Ø 20/25 | Ø 20/25 |

EQUIPMENT FOR ORNAMENTAL FOUNTAINS



MESSNER DECORATIVE POND EQUIPMENT

Pond Skimmers

Skimmers are the primary means of removing polluting particles from the water surface and circulating them before they settle to the bottom. A thin layer of water surface material passes through the skimmers via pump suction. Larger pollutants, such as leaves, are captured by the skimmer filter and must be cleaned periodically. Skimmers also contribute to preventing algae growth by maintaining a stable water temperature balance. In applications with waterfalls or similar flowing water, they act as pre-pump filters and can be cleaned independently of the pump.

Floating Type Tele Skimmer 200

It is made of black plastic material. The recommended effective flow rate is min. 50lt/min and max. 300lt/min. It can be used with pumps with flow rates of 3m³/h to 39m³/h. One unit should be used for a water surface up to 60m². The required minimum water depth is 37.5cm and max. 90cm. It has a 20cm diameter and 1 1/2" external threaded connection. The skimmer includes a ø36cm stand, telescopic foot, ø40/50 hose nozzle, reduction socket and 2 reduction fittings.



| | Code | Unit Price Euro |
|------------------|------------|-----------------|
| Tele Skimmer 200 | 168/002399 | 325.00 |

Floating Type Skimmer 140

Made of black plastic material. Recommended effective flow rate is min. 20lt/min and max. 50lt/min. Can be used with pumps with flow rates from 2m³/h to 6m³/h. One unit should be used for water surfaces up to 30m². Minimum required water depth is 24cm. It has a 14cm diameter and 1" internal threaded connection. Skimmer and socket are included.



| | Code | Unit Price Euro |
|-------------|------------|-----------------|
| Skimmer 140 | 168/002393 | 260.00 |

Floating Skimmer 140

Made of black plastic/stainless steel. Recommended effective flow rate is min. 20lt/min and max. 50lt/min. Can be used with pumps with flow rates from 2m³/h to 6m³/h. One unit should be used for water surfaces up to 40m². Minimum required water depth is 30cm. It has a 14cm diameter and 1" internal threaded connection. The skimmer, 3 floats and ø19-20/25/32 hose nozzles are included.



| | Code | Unit Price Euro |
|----------------------|------------|-----------------|
| Floating Skimmer 140 | 168/002394 | 270.00 |

Floating Type Skimmer 200

Made of black plastic material. Recommended effective flow rate is min. 50lt/min and max. 300lt/min. Can be used with pumps with flow rates from 3m³/h to 39m³/h. One unit should be used for water surfaces up to 60m². Minimum required water depth is 43cm. It has a 20cm diameter and a 1 1/4" external threaded connection. Skimmer, filter basket, stand and ø32 hose nozzles are included.



| | Code | Unit Price Euro |
|-------------|------------|-----------------|
| Skimmer 200 | 168/002396 | 250.00 |

Floating Type Tube Skimmer 200

Made of black plastic material. Recommended effective flow rate is min. 50lt/min and max. 300lt/min. Can be used with pumps with flow rates from 3m³/h to 39m³/h. One unit should be used for water surfaces up to 60m². Minimum required water depth is 25cm. It has a 20cm diameter and ø125 connection. Skimmer and filter basket are included.



| | Code | Unit Price Euro |
|------------------|------------|-----------------|
| Tube Skimmer 200 | 168/002397 | 210.00 |

EQUIPMENT FOR ORNAMENTAL FOUNTAINS



MESSNER DECORATIVE POND EQUIPMENT

WATERFALLS

Ready-to-use water overflow nozzles for waterfall applications. You can create a waterfall effect by mounting them side-by-side in a wide area, or a stepped appearance by mounting them one below the other. Mounting screws, fittings, and adhesive are included. Thanks to its robust body structure, it can support decorative materials such as stone.

| Plastic waterfall | Code | Unit Price Euro |
|------------------------|-------------------|-----------------|
| _elale 285 x 125 x 80 | 162/002130 | 200.00 |
| _elale 380 x 200 x 190 | 162/002121 | 330.00 |

Mini Versailles Water Show Set



The Mini Versailles water show set features four different automatic shows that alternate with each other. The show time can be manually adjusted by deactivating the automatic system. Nozzle water heights can be adjusted individually. Being compact, they require no complicated assembly. Simply place them in the water and start using them.

The Mini Versailles water show set includes a Power Tec2 6000 model pump with 100W power and 6200lt/h flow rate, 3 halogen lighting sets with 20W power, a transformer, and 3 sets of colored lenses. The maximum water height is 1.7m and the water diameter is 1.5m. The required water depth is 22-24cm. The required water basin diameter must be at least 2.5m.

| | Code | Unit Price Euro |
|--------------------------------|-------------------|-----------------|
| Mini Versailles Water Show Set | 160/001903 | 6,000.00 |
| Mini Versailles Floating Set | 160/001912 | LFS |

Halogen decorative pool lights

Halogen lamps are long-lasting, efficient, and offer high illumination power. They are more energy-efficient than traditional lamps. They are manufactured with heat-resistant Tempax glass and a reinforced plastic housing. While 50-watt lamps are only suitable for underwater use, 20-watt models can also be used in outdoor applications.



UWL 1220/5 halogen lamp 20W (with transformer)

Made of reinforced plastic housing and Tempax glass. 230V/50Hz. Can be used underwater and above water. Includes 7.5m cable, lenses in 4 different colors (red, yellow, green, blue), ground stake, stand and 20VA transformer.

| | Code | Unit Price Euro |
|-----------------------------|-------------------|-----------------|
| UWL 1220/5 halogen lamp 20W | 170/002896 | 150.00 |



UWL 1250/5 halogen lamp 50W Clip-on (without transformer)

Made of reinforced plastic housing and Tempax glass. 230V/50Hz. Can be used underwater and above water. Includes 7.5m cable, lenses in 4 different colors (red, yellow, green, blue), and stand. Transformer not included.

| | Code | Unit Price Euro |
|-------------------------------------|-------------------|-----------------|
| UWL 1220/5 halogen lamp 50W clip-on | 170/002882 | 95.00 |



UWL 3-piece halogen lamp sets

Includes 3 lamps, power cable, stands, colored lenses and transformers.

| | Code | Unit Price Euro |
|-------------------------------------|-------------------|-----------------|
| UWL 3x20W Set with 70VA transformer | 170/002915 | 330.00 |

EQUIPMENT FOR ORNAMENTAL FOUNTAINS



MESSNER DECORATIVE POND EQUIPMENT

F1skiyeleer

Plastic nozzles with 20 mm internal threads, suitable for use with Messner pond pumps. The recommended water flow height and diameter values for different pump types are shown in the table below.



Volkan Fountain 2 s1ra11



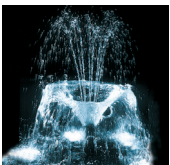
| Pump type | Volkan Fountain 2 s1ra11 | | Volkan Fountain special | | Halka Fountain | |
|---------------|-----------------------------|-------------------|----------------------------|-------------------|-----------------------|-------------------|
| | water diameter1 cm | water level cm | water diameter1 cm | water level cm | water diameter1 cm | water level cm |
| system-X 750 | Ø 35 | 75 | Ø 30 | 55 | Ø 100 | 70 |
| System-X 1000 | Ø 40 | 80 | Ø 35 | 60 | Ø 120 | 70 |
| system-X 1500 | Ø 60 | 130 | Ø 70 | 105 | Ø 180 | 120 |
| System X 2500 | Ø 100 | 190 | Ø 80 | 145 | | |
| System X 3000 | Ø 90 | 210 | Ø 80 | 180 | | |
| System X 4000 | Ø 100 | 230 | Ø 100 | 190 | | |



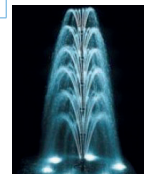
| Pump type | Calyx Fountain Vario | | Foam F1 ski | Bell Fountain | |
|------------------------------|-------------------------|-------------------|-------------------|-----------------------|-------------------|
| | water diameter1 cm | water level cm | water level cm | water diameter1 cm | water level cm |
| System X-750 | Ø 20 | 20 | | | |
| System X-1000 | Ø 20 | 20 | | | |
| System X-1500 | Ø 35 | 25 | | Ø 50 | 30 |
| System X-2500 | Ø 40 | 30 | 32 | Ø 50 | 30 |
| System X-3000 | Ø 40 | 30 | 45 | Ø 60 | 30 |
| System X-4000 | Ø 45 | 30 | 50 | Ø 70 | 55 |
| power X2/ power Tec2 6000 | | | 150 | | |



| Plastic sprinklers | Code | Unit Price Euro |
|--------------------------|------------|--------------------|
| Volkan f1skiye, 2 s1ra11 | 150/001060 | 30.00 |
| Volkan f1skiye, special | 150/001070 | 32.00 |
| Volkan f1skiye, 3 s1ra11 | 150/001090 | 33.00 |
| Finger nozzle 1/2" | 150/001212 | 65.00 |
| Ring fountain | 150/001220 | 33.00 |
| Ring fountain 2 rows | 150/001230 | 33.00 |
| Calyx f1skiye, Vario | 150/001180 | 50.00 |
| Foam sprayer | 150/001170 | 43.00 |
| Bell fountain | 150/001240 | 51.00 |
| Star Fountain | 150/001291 | 35.00 |



Bell Fountain



Star Fountain

EQUIPMENT FOR ORNAMENTAL FOUNTAINS



MESSNER DECORATIVE POND EQUIPMENT

Fontains

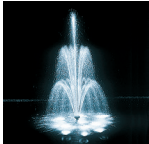
Suitable for use with Messner pond pumps, these nozzles are made of plastic and stainless steel, and feature 1" to 1 1/4" external threaded connections. The recommended water flow height and diameter values, varying according to different pump types, are shown in the table below.



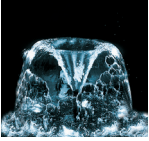
Foam Sprinkler 1"



Special Foam F1 ski 1"



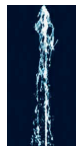
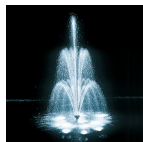
Volkan Fountain 1"



Calyx Fountain 1"



Water Column Sprinkler 1"



Geyser Fountain



| Pump type | Foam F1skiye | Special Foam F. | Halka F1skiye | |
|---------------------------|----------------|-----------------|--------------------|----------------|
| | water level cm | water level cm | water diameter1 cm | water level cm |
| power-X2/power-Tec2 4000 | 22 | 30 | Ø 70 | 45 |
| power-X2/power-Tec2 6000 | 50 | 70 | Ø 80 | 45 |
| power-X2/power-Tec2 8000 | 70 | 85 | Ø 90 | 45 |
| power-X2/power-Tec2 10000 | 95 | 120 | Ø 105 | 45 |
| power-X2/power-Tec2 14000 | 110 | 135 | Ø 110 | 45 |

| Pump type | Bell F1skiye 1"-E | | Column of Water F1skiye 1"-E |
|---------------------------|--------------------|----------------|------------------------------|
| | water diameter1 cm | water level cm | water level cm |
| power-X2/power-Tec2 4000 | Ø 90 | 45 | 65 |
| power-X2/power-Tec2 6000 | Ø 110 | 45 | 140 |
| power-X2/power-Tec2 8000 | Ø 110 | 45 | 190 |
| power-X2/power-Tec2 10000 | Ø 115 | 45 | 250 |
| power-X2/power-Tec2 14000 | Ø 125 | 45 | 300 |

| Plastic/stainless steel sprinklers | Code | Unit Price Euro |
|---|------------|-----------------|
| Foam sprayer 1"-E | 152/001151 | 85.00 |
| Foam sprayer (stainless steel) 1"-E | 152/001150 | 200.00 |
| Special foam sprayer 1"-E | 152/001152 | 190.00 |
| Calyx f1skiye 1"-E | 152/001161 | 110.00 |
| Calyx f1skiye (stainless steel) 1"-E | 152/001160 | 300.00 |
| Bell fountain 1"-E | 152/001041 | 250.00 |
| Water Column Sprinkler (Stainless Steel) 1"-E | 152/001123 | 250.00 |
| Geyser fountain nickel plated. | 152/001190 | 260.00 |

EQUIPMENT FOR ORNAMENTAL FOUNTAINS

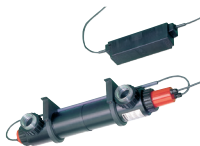


MESSNER DECORATIVE POND EQUIPMENT

Pond UV devices¹

UV-C lamps have a limited lifespan and should be replaced at the end of the season. Cleaning the quartz glass tube and replacing the UV-C lamp can be done without tools.

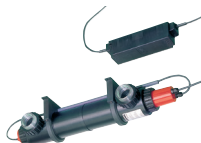
UV-C 8 watt



It has a capacity of 8 Watts. Its dimensions are 400 x Ø 85 mm, and it has a 1" internal threaded connection inlet. The recommended effective flow rate is min. 500lt/h and max. 1500lt/h. It is ideal for ponds up to 4 m³.

| | Code | Unit Price Euro |
|-------------|------------|-----------------|
| UV-C 8 Watt | 162/002480 | 310.00 |

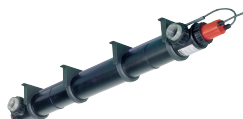
UV-C 25 watt



It has a capacity of 25 Watts. Its dimensions are 550 x Ø 85 mm, and it has a 1" + 1/4" internal threaded connection inlet. The recommended effective flow rate is min. 500 lt/h and max. 4000 lt/h. It is ideal for ponds up to 12.5 m³.

| | Code | Unit Price Euro |
|--------------|------------|-----------------|
| UV-C 25 Watt | 162/002482 | 430.00 |

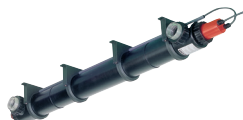
UV-C 30 watt



It has a capacity of 30 Watts. Its dimensions are 1000 x Ø 85 mm, and it has a 1" + 1 1/4" internal threaded connection inlet. The recommended effective flow rate is min. 500 lt/h and max. 6000 lt/h. 15m³ ideal for ponds up to [size].

| | Code | Unit Price Euro |
|--------------|------------|-----------------|
| UV-C 30 Watt | 162/002483 | 510.00 |

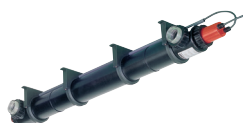
UV-C 55 watt



It has a capacity of 55 Watts. Its dimensions are 1000 x Ø 85 mm, and it has a 1" + 1 1/4" internal threaded connection inlet. The recommended effective flow rate is min. 500 lt/h and max. 8000 lt/h. It is ideal for ponds up to 27.5 m³.

| | Code | Unit Price Euro |
|--------------|------------|-----------------|
| UV-C 55 Watt | 162/002484 | 630.00 |

UV-C 75 watt



It has a capacity of 75 Watts. Its dimensions are 1000 x Ø 85 mm, and it has a 1" + 1 1/4" internal threaded connection inlet. The recommended effective flow rate is min. 500 lt/h and max. 12000 lt/h. It is ideal for ponds up to 37.5 m³.

| | Code | Unit Price Euro |
|--------------|------------|-----------------|
| UV-C 75 Watt | 162/002487 | 720.00 |

EQUIPMENT FOR ORNAMENTAL FOUNTAINS

QUICK VAC ELECTRIC LOW DEPTH DECORATIVE POND CLEANERS

Quick Vac Vacuum Cleaners (can operate in depths of 15-40 cm)

These pool cleaners are lightweight, portable, and battery-operated, with 360° rotation and an independent filter. They can operate in ponds and ornamental pools at depths of 15 to 40 cm, cleaning accumulated leaves and sand without consuming excessive energy. They feature 360° rotating wheels and come with a transport trolley.

Telescopic handle, battery, cable and power supply are not included.

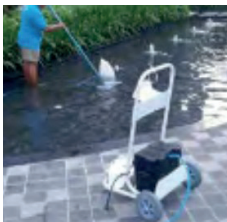


| Technical Data | HVAC100 | HVAC200 | HVACXL |
|--------------------------|--------------------|--------------------|--------------------|
| Model | Quick Vack 100 | Quick Vac 200 | Quick Vac XL |
| Broom Width (cm) | 40 | 40 | 110 |
| EMI Power (m³/h) | 40 | 40 | 40 |
| Ta_1ma Arabas1 | Aluminum | Aluminum | Aluminum |
| Cable Length (m) | 14 | 14 | 21 |
| Weight in water (kg) | 5 | 5 | 7 |
| Pump (W) | 250 | 250 | 250 |
| Filtration (micron) | 75, 100, 250, 1000 | 75, 100, 250, 1000 | 75, 100, 250, 1000 |
| Filtration Capacity (kg) | 2 | 4 | 6 |
| Playback Time (hours) | 3 | 3 | 3 |
| Power Supply (V) | 12 | 12 | 12 |
| Minimum Water Depth (cm) | 15 cm | 40 cm | 40 cm |



Quick Vac 100 Cleaning Robot for Decorative Ponds (h=15 cm water depth) (12 Volt)

| | Code | Unit Price Euro |
|---------------|---------|-----------------|
| Quick Vac 100 | HVAC100 | LFS |



Quick Vac 200 Cleaning Robot for Decorative Ponds (h=40 cm water depth) (12 Volt)

| | Code | Unit Price Euro |
|---------------|---------|-----------------|
| Quick Vac 200 | HVAC200 | LFS |

Quick Vac XL Cleaning Robot for Decorative Ponds (h=40 cm water depth) (12 Volt)

| | Code | Unit Price Euro |
|--------------|--------|-----------------|
| Quick Vac XL | HVACXL | LFS |

**IN POOLS AND PONDS
IDEAL CLEANING**



Quick Vac 100



Quick Vac 200



Quick Vac XL

POND



AMORPHOUS WATER GARDENS

PE Product, Garden Decorative Ponds



| 120 Liter Volume | Code | Unit Price Euro |
|------------------|----------------|-----------------|
| 120 x 90 x 40 cm | B110-00 | €270.00 |



| 500 Liter Volume | Code | Unit Price Euro |
|-------------------|----------------|-----------------|
| 157 x 125 x 54 cm | B501-00 | 310.00 ~ |



| 900 Liter Volume | Code | Unit Price Euro |
|---------------------------|----------------|-----------------|
| 150 x 150 x 45 cm, Square | B084-00 | 660.00 |



| 1000 Liter Volume | Code | Unit Price Euro |
|-------------------|-----------------|-----------------|
| 224 x 150 x 70 cm | B1001-00 | 720.00 ~ |

"Perfect" Pond Sweeper

"Continuously functional with internal drain pump1"

50L/min 3 0.18 bar

"Accessories: 4 pipes, 4 nozzles, 7.5 m vacuum hose, 5 m discharge hose, large wheels, easy-grip handle, 10 m power cable, accessory storage in the rear compartment."



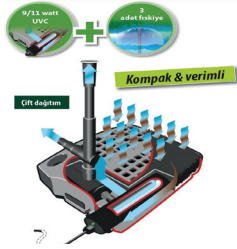
| | F650P-00 | SU:1 |
|-------------------|--|------|
| Pond area 1 | 10 m ² greater than for ponds | |
| Tank capacity | 45 liters | |
| maximum flow rate | max. 4000 l/h | |
| Strength | 2200 - 2400 W | |
| L x W x H | 50 x 43 x 105 cm | |
| EmI_depth i | max. 180 cm | |
| Height | max. 7 m | |
| Unit Price Euro | 1,500 € | |

POND FILTERS



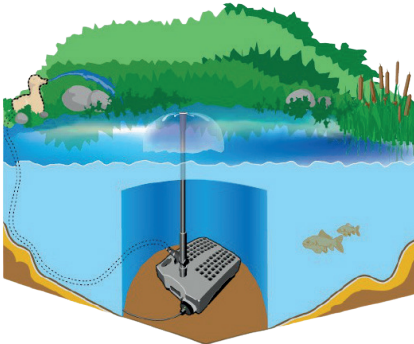
FOR PONDS PUMPED UNDERWATER FILTERS

All-in-One Underwater Filter



The smartline pool filter with integrated UVC (9 Watt) is ideal for pools up to 5,000 liters. The mechanical filtration process with a large filtration surface guarantees long cleaning intervals. All filter components are virtually invisible at the bottom of the pool. The pump and UVC disinfection device, which have separate power supplies, can be operated at different intervals if desired. It also features an adjustable spray nozzle connection and a telescopic extension with adjustable tilt.

- Mechanical filtration with a large filtration surface.
- Ideal for ponds up to 5,000 liters in volume.
- All filter equipment is virtually invisible on the pool floor.
- The spray angle is adjustable.
- UVC function check
- Includes adjustable sprinkler connection and 3 sprinklers.
- Including Filtran Media
- Smart plug compatible



Bell ø 60 cm



Filter Media 1



UVC i_levi control



Cascade ø 60 cm



Cascade ø 140 cm



Adjustable pond connection1s1



E im opportunity1



| | FA 1000UV-00 | FA 2000UV-00 |
|----------------------|---------------------|----------------------|
| Bal1ks1z pond volume | | |
| Bal1kl1 volume | f 1500 L | f 2500 L |
| Replacement lamp | ZF409-00 | ZF411-00 |
| Pump capacity | 1000 l/h / 24 W | 2000 l/h / 34 W |
| Head pressure | 1.20 m | 1.80 m |
| Watt | 33W pump and 9W UVC | 45W pump and 11W UVC |
| Cable length | 10 meters | 10 meters |
| L x W x H | 32 x 25 x 14 cm | 38 x 27 x 13 cm |
| Unit Price Euro | 350 ~ | 500 ~ |

POND FILTERS



PONDS PRESSURE FILTERS

Pressure Filter Set HLF 4000-00

- Filters with mechanical filtration
- Ideal for ponds up to 4,000 liters in volume.
- All filter equipment is virtually invisible on the pool floor.
- Pull-mechanism quick cleaning system and integrated waste disposal system.
- Backwash and waste outlet (third hose connection)
- Biological filter, flow-controlled pump, UV-C, hose and nozzle. lan1 complete with accessories!



"Easy clean" cleaning system



"Easy clean" h1z1 cleaning system

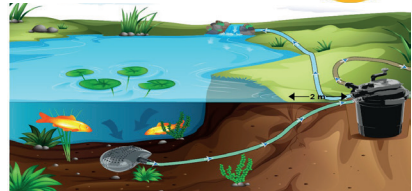
| HLF 4000-00 | |
|----------------------|-----------------------|
| Bal1ks1z pond volume | |
| Bal1k11 volume | f 2000 L |
| UV lamp | 7 W |
| Replacement lamp | ZF407-00 |
| Pump C1k1_1 | 2200 l/h / 25W |
| L x W x H | 31 x 31 x 41 cm |
| Hose | 3 meters 3/4" (19 mm) |
| Cable length | 5 meters |
| Unit Price Euro | 700 ~ |

Pressure Filter Set FPU 10000-00 / 20000-00

- Filters with mechanical filtration
- Ideal for ponds up to 10,000 liters in volume.
- All filter equipment is virtually invisible on the pool floor.
- Pull-mechanism quick cleaning system and integrated waste disposal system.
- Complete with biological filter, flow-controlled pump, UV-C, hose and connection accessories.



"Easy clean" cleaning system



"Easy clean" fast cleaning system



Pump flow rate control system

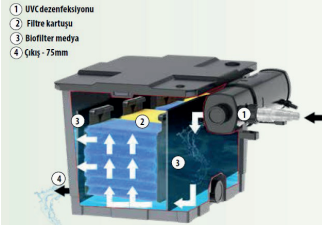
| | FPU 10000-00 | FPU 20000-00 |
|----------------------|----------------------|------------------------|
| Bal1ks1z pond volume | | |
| Bal1k11 volume | f 5.000 L | f 10,000 L |
| Arm pond | f 2.500 L | f 5.000 L |
| UV lamp1 | 11 W | 24W |
| Replacement lamp | ZF411-00 | ZF424-00 |
| Pump capacity | 3.3 m3/h / 40 W | 4.9 m3/h / 40 W |
| Hose connection1s1 | 4 meters 25/32/38 mm | 4 meters 19/25/32/38mm |
| Cable | 5 meters | |
| L x W x H | 35 x 28 x 55 cm | 38 x 38 x 73 cm |
| Unit Price Euro | 1,100 ~ | 1,230 |

Yeni

POND FILTERS



FOR PONDS ATTRACTIVE FLOW_ FILTERING PRINCIPLE



1) The integrated UVC disinfection device is used to gather floating algae and kill microbes, so they are collected in the filter medium.

2) Nitritation (conversion of ammonia/ammonium to nitrite) is carried out by Nitrosomonas bacteria within the sponge. Water must pass over the filter sponges before reaching deeper sections. Nitrosomonas bacteria form in these sponges due to nitrite.

3) By using biospheres in the first and last sections of the filter, habitats for more Nitrosomonas and Nitrobacter bacteria are created. Additionally, hazardous nitrite is converted into nitrate.

Attractive Flux Filter FPU10100-00



- Integrated UVC disinfection device to kill microbes and clumping algae.
- Filter sponge for mechanical filtration.
- Large surface area biospheres for forming active biofilm.
- Filter contamination level indicator, water temperature indicator



"Press & Clean" cleaning system



It can be changed. cartridges



Filter Indicator Glass1



Water Temperature Indicator

| | FPU10100-00 | SU-4 |
|--------------------------|------------------|------|
| Pond volume without fish | | |
| Fish volume | f 5000 L | |
| Arm pond | f 2500 L | |
| UV lamp | 9 W | |
| Replacement lamp | ZF409-00 | |
| Pump capacity | 3300 l/h / 40 W | |
| L x W x H | 340 x 27 x 40 cm | |
| Unit Price Euro | 750 | |

The 3-chamber filter includes: filter media (biotopes + filter sponge), flow-controlled pond pump, integrated UVC device, 5 meters of 25 mm connection hose, and connection equipment.

Multi-cell Filter for Ponds FPU24000-00 / FPU40000-00

- Complete Professional Pond Filter Set with pump and UVC disinfection.
- The powerful ECO-pump allows passage of particles up to 10 mm in size.
- Easy to use - Ideal for large fish ponds

Yeni



Water Temperature Indicator



Filter Indicator Glass1



| Code | FPU24000-00 | FPU40000-00 |
|-------------------------------|---|---|
| Pond volume without fish | | |
| Fish volume | f 12000 L | f 20000 L |
| Arm pond | f 6000 L | f 10000 L |
| UV lamp | 24W | 36 W |
| Replacement lamp | ZF424-00 | ZF436-00 |
| Pump capacity | 4800 l/h / 23 W | 10000 l/h / 95 W |
| L x W x H | 80 x 46 x 46 cm | 136 x 52 x 40 cm |
| Unit Price Euro | 2,000 € | 2,250 |
| Products included in the set: | <ul style="list-style-type: none"> • Pump P5100-00E • 24W UVC • Filter sponge & Bio balls • 5 m Hose (32mm) • Connection accessories | <ul style="list-style-type: none"> • Pump HFP10000 • 36W UVC • Filter sponge & Bio balls • 5 m Hose (38 mm) • Connection accessories |

POND FILTERS



PROFESSIONAL ATTRACTIVE FLOW FILTER SYSTEM FOR PONDS



APOLLO L PRO
F 321-00 (Vortex bölümü + 2 bölüm)



Apollo Pro Attractive Flow FiltersPREMIUM

- Pro Pond Filter with sophisticated equipment - Material: Reinforced polyester
- Universal hose connectors and high-quality drain valve.

Filter Section

- A)Vortex creation section
- B)Mechanical filtration with Sansai Brushes
- C)Biological filtration with Japanese mats.
- D)Simple waste disposal
- TO)Biological filtration with special substrate (F322/F323)

| Code | APOLLO XL PRO F 322-00 | APOLLO XXL PRO F 323-00 |
|--------------------------|-----------------------------------|-----------------------------------|
| Pond volume without fish | 80 m ³ | 120 m ³ |
| Fish volume | f 40,000 L | f 60,000 L |
| Arm pond | f 20,000 L | f 30,000 L |
| Filter Sections | Vortex + 3 episodes | Vortex + 3 episodes |
| Recommended pump | P8100E-00 (8.1 m ³ /h) | P10100E-00 (10 m ³ /h) |
| Recommended UVC | F455E-00 (55 W) | F455E-00 (55 W) |
| L x W x H | 176 x 46 x 67 cm | 257 x 81 x 80 cm |
| Unit price EURO | €4,700 | 6,900 - |

| | Sansai Specialty Brushes | Japanese Filtration Mat1 | Starting Bacteria | Phosphate Ba lay1c1 | Special Filter Substrate1 | Zeolite 20 kg |
|-----------------------|--------------------------|--------------------------|-------------------|---------------------|---------------------------|---------------|
| = Included in the set | | | | | | |
| F322-00 | 9 x | 4 x | 1000 g | 1000 ml | 20 kg | - |
| F323-00 | 12 x | 9 x | 1000 g | 1000 ml | 20 kg | 20 kg |

POND ACCESSORIES



POND ACCESSORIES

Pond Ventilation

- Aeration and circulation for optimum water balance.
- Includes back cover, 10 mt silicone air hose and air ta_1.
- 3 meter power cable



| | TZ615-00 |
|------------------|----------------|
| Volume | 12,000 L |
| Flow Rate (C1k1) | 720 l/h |
| Watt | 8 W |
| Hose | 4 x 10 m |
| L x W x H | 21 x 15 x 9 cm |
| Unit Price Euro | 200 ~ |

SURFACE SKIMMERS

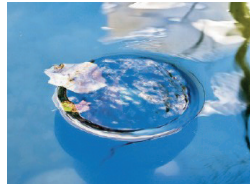
Pond skimmer

RO Surface Skimmer

It can be aligned in the most optimal way.

Secure positioning on the pool bottom (The bottom can be fixed with stones) Minimum pond depth: 60 cm

Maximum pond depth: infinity

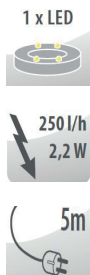


| | F551-00 |
|------------------|---|
| Ball1ks1z | 40 m ² water surface up to area1 |
| Recommended pump | 6,000 - 20,000 l/h |
| Included | at 15 cm intervals 3 cm extension |
| L x W x H | 42 x 24 x 15 cm |
| Unit Price Euro | 250 ~ |

DECORATIF MINI ORNAMENTAL FOUNTAINS

Mini Garden Decorative Ponds1 (LED Illuminated1)

Comes with a 5 m long cable.



50 x 47 x 30
cm

| 016634-09 |
|-----------|
| Gray LED |
| Polystone |
| 500.00 ~ |

Mini Hemisphere Decorative Ponds (LED Illuminated)

Comes with a 5 m long cable.



50 x 47 x 30
cm

| 016602-17 |
|---------------------------|
| Earth Tone Hemisphere LED |
| Polystone |
| €490.00 |



POND MAINTENANCE PRODUCTS

TZ751-00

1 Ideal Pond Maintenance Cure



Granular mix 1_1m1 is used for initial filling, water changes, annual season start, algae control, or when there is a noticeable deficiency in pond life.

"It transforms tap water into pond water." It contains various minerals.
 "Increases carbonate and total hardness" "Stabilizes pH value"
 " 12 msuitable for capacity

TZ752-00

Pond Algae Preventer



Granular mixture for combating 1-strand algae. It starts to show its effect immediately upon contact with scattered algae. The algae loosen and die.

It also breaks down leaves and mud that accumulate at the bottom of the pool more quickly.
 "Prevents algae growth."
 "Its effect is visible upon first contact." It is in granular form, 12 m.suitable for capacity

TZ754-00

PLUS Pond Water Clarifier



S1v1 concentrate causes dirt particles to clump together and stick to each other within a few hours, making them easy to clean with a skimmer or bottom suction cup.

Crystal clear pond water
 "It isolates phosphate and helps prevent new turbidity."
 "Use of snow for algae is not recommended"
 12 msuitable for capacity

TZ791-00

H1z1-Test-Seti 68s1 in 1



6 basic value measurements:
 pH, GH, KH, CL, NO2, NO3

It provides information about your water's parameters in under a minute. It shows whether the parameters are correct or abnormal. The box contains 50 test strips.



F-PLUS

F Plus All-in-One Filter Bacteria



F+ contains 10 individually packaged sachets, enough for one pool season. It is very easy to use. One sachet is poured directly into the filter every 3 weeks.

F+ accelerates the growth of bacterial cultures in the pool filter.
 The F+ filter improves and enhances performance.
 F+ increases water hardness and stabilizes pH. F+ is ideal for use in all pool filters for pool sizes from 2,000 to 40,000 liters.
 " 3 x starting bacteria " 7 x pond water conditioner

TZ753-00

Pond Water Clarifier



A liquid concentrate to kill almost all floating algae and thus prevent green, cloudy pond water.

The floating algae gradually die, and the water becomes clearer and clearer.
 "Green clarifies the color of the water."
 "It is easy to use, 12 m"suitable for capacity. "Does not contain copper additives."

TZ755-00

Filter Starter Bacteria



A liquid concentrate used to enrich water with particularly important and beneficial bacterial species, thereby developing the necessary pond biology.

"It eliminates bacteria in filters." "It increases the efficiency of filters."
 "It turns tap water into pond water." "It prevents bad odors."
 "Breaks up the mud at the bottom of the pond" Long-term effect
 " 12 msuitable for capacity

F100-00

Zeolite

"Ideal as a filtration material"
 "Contains no copper additives"
 "Harmless to excessive use"
 "Renew at the end of the season" For fish, completely
 "10 m"suitable for capacity

| Code | F-PLUS | TZ751-00 | TZ752-00 | TZ753-00 | TZ754-00 | TZ755-00 | TZ791-00 | F100-00 |
|-----------------|--------|----------|----------|----------|----------|----------|-----------|---------|
| Amount | 10_ase | 1000 g | 1000 g | 1000 ml | 600 g | 1000 ml | 50 sticks | 10 kg |
| Unit Price EURO | 55 | 55 | 65 | 45 | 50 | 50 | 51 | 55 |



READY-MADE SWIMMING POOLS

Madagascar

"The pool depth is 150 cm. The pool walls are made of galvanized steel panels.
"Blue PVC Liner inner surface coating 1 75/100, Sand filter (10m) The pump, skimmer, connecting pipes, fittings and filter media are shipped together with a stainless steel ladder (4 steps).



| Dimensions | Code | Unit Price Euro |
|--------------|-----------|-----------------|
| Ø420 cm | KPE4259 | 4,500.00 |
| 500 x 300 cm | KPEOV5059 | 6,000.00 |
| 600 x 320 cm | KPEOV6059 | 6,100.00 |
| 700 x 320 cm | KPEOV7059 | 6,300.00 |
| 800 x 400 cm | KPEOV8059 | 6,800.00 |



Sumatra

"The pool depth is 120 cm. It is manufactured from 60/100 galvanized steel panels.
"Blue PVC Liner inner surface coating 1 60/100, Sand filter and pump 1, Skimmer, Connection pipes 1, Fittings and filter media, Stainless steel ladder (3 steps) are shipped together.



| Dimensions | Code | Unit Price Euro |
|--------------|-----------|-----------------|
| Ø350 cm | KPE3527 | 3,500.00 |
| Ø420 cm | KPE4227 | 3,700.00 |
| 500 x 300 cm | KPEOV5027 | 4,200.00 |
| 600 x 320 cm | KPEOV6027 | 4,400.00 |
| 700 x 320 cm | KPEOV7027 | 4,600.00 |
| 800 x 400 cm | KPEOV8027 | 5,400.00 |



READY-MADE SWIMMING POOLS



READY-MADE SWIMMING POOLS

Mariposa Pool

"Polyester and polymer mixed liner inner coating with high resistance and durability properties."

Italian design, high-quality and durable sun loungers.

Pool area 1: 2.30 m²

Pool depth: 50 cm

The warranty period is 5 years for the liner and 2 years for other equipment.



| Dimensions | Code | Unit Price Euro |
|---|--------|-----------------|
| D1 dimensions: 282 x 219 x 60 cm (W x L x H) 1ç dimensions: 138 x 165 cm | PBT200 | 4,725.00 |

Liner

Reinforced liner:
0.85 mm - White

Body

Electrostatic
painted aluminum
construction

Filtration

60W 12V pump-operated internal
cartridge filter.

Flow rate = 3 m³/h



LED Lighting

0.3 Watt projector

1_ME SPAS

Silver Spa

A spa made of PVC liner, with a capacity of 5-6 people.



| Features | |
|---------------------------------|-------------------------|
| Code | FLDSL155C |
| Water Volume | 850 L |
| D1_ Dimensions | 185 cm x 185 cm x 70 cm |
| 1. Dimensions | 155 cm x 155 cm x 70 cm |
| Air Nozzles1 | 130 pieces |
| A 1r1k (bo_) | 30 kg |
| Maximum temperature | 42 °C |
| Suggested ambient temperature 1 | 5°C and above |
| Unit Price (Euro) | 1,650.00 |

PVC FITTINGS

AQUARAMBLA RIGID PVC STABILIZER



Aquarambla U-PVC Adhesive

Aquarambla imported from Spain, in plastic packaging & with application brush.

| | Code | Unit Price Euro |
|-----------------|-------|-----------------|
| 1 liter package | 73367 | 20.00 |

ECONOMICAL PVC VALVES

U-PVC Economical PVC Ball Water Valves1 (1THAL)



| | Code | Unit Price Euro |
|---------|----------|-----------------|
| Ø 63 mm | BVD16063 | 14.00 |

U-PVC Aqualink PVC Ball Water Valves1 (1THAL)



| | Code | Unit Price Euro |
|----------|---------|-----------------|
| Ø 20 mm | PV2001 | 7.10 |
| Ø 25 mm | PV2002 | 7.70 |
| Ø 32 mm | PV2003 | 9.40 |
| Ø 40 mm | PV2004 | 12.10 |
| Ø 50 mm | PV2005 | 14.90 |
| Ø 63 mm | PV2006 | 21.05 |
| Ø 75 mm | PV2007 | 58.00 |
| Ø 90 mm | PV2008 | 82.00 |
| Ø 110 mm | PV2010R | 94.00 |

(Domestic) U-PVC Pipe



| 10 Bar | Code | Unit Price Euro |
|----------|------|-----------------|
| Ø 40mm | - | LFS |
| Ø 50mm | - | LFS |
| Ø 63 mm | - | LFS |
| Ø 75 mm | - | LFS |
| Ø 90 mm | - | LFS |
| Ø 110 mm | - | LFS |
| Ø 125 mm | - | LFS |
| Ø 140 mm | - | LFS |
| Ø 160 mm | - | LFS |
| Ø 200 mm | - | LFS |
| Ø 225 mm | - | LFS |
| Ø 250 mm | - | LFS |
| Ø 280 mm | - | LFS |
| Ø 315 mm | - | LFS |
| Ø 355 mm | - | LFS |
| Ø 400 mm | - | LFS |
| Ø 450 mm | - | LFS |
| Ø 500 mm | - | LFS |

PVC FITTINGS



ECONOMICAL PVC FITTINGS

PVC 90^{he}Elbow

| Yap1_t1rma PN16 | Code | Unit Price Euro |
|-----------------|---------|-----------------|
| Ø 50 mm | PV01050 | 1.30 |
| Ø 63 mm | PV01063 | 2.25 |
| Ø 75 mm | PV01075 | 4.50 |
| Ø 90 mm | PV01090 | 6.45 |
| Ø 110 mm | PV01110 | 12.40 |

PVC 45^{he}Elbow



| Yap1_t1rma PN16 | Code | Unit Price Euro |
|-----------------|---------|-----------------|
| Ø 50 mm | PV02050 | 1.40 |
| Ø 63 mm | PV02063 | 2.30 |
| Ø 75 mm | PV02075 | 5.25 |
| Ø 90 mm | PV02090 | 7.50 |
| Ø 110 mm | PV02110 | 11.40 |

PVC Tee 90^{he}



| Yap1_t1rma PN16 | Code | Unit Price Euro |
|-----------------|---------|-----------------|
| Ø 50 mm | PV03050 | 1.95 |
| Ø 63 mm | PV03063 | 4.50 |
| Ø 75 mm | PV03075 | 6.20 |
| Ø 90 mm | PV03090 | 10.40 |
| Ø 110 mm | PV03110 | 16.40 |

PVC Man_on



| Yap1_t1rma PN16 | Code | Unit Price Euro |
|-----------------|---------|-----------------|
| Ø 50 mm | PV05050 | 1.10 |
| Ø 63 mm | PV05063 | 1.70 |
| Ø 75 mm | PV05075 | 3.70 |
| Ø 90 mm | PV05090 | 4.80 |
| Ø 110 mm | PV05110 | 7.80 |



ECONOMICAL PVC FITTINGS

PVC Reduction



| Adhesive PN16 | Code | Unit Price Euro |
|------------------|---------|-----------------|
| Ø 63 mm x 50 mm | PV06063 | 0.95 |
| Ø 75 mm x 63 mm | PV06075 | 1.40 |
| Ø 90 mm x 75 mm | PV06090 | 2.35 |
| Ø 110 mm x 90 mm | PV06110 | 4.50 |

PVC Blind Plug



| Adhesive | Code | Unit Price Euro |
|----------|---------|-----------------|
| Ø 50 mm | PV07050 | 1.30 |
| Ø 63 mm | PV07063 | 1.65 |
| Ø 75 mm | PV07075 | 3.25 |
| Ø 90 mm | PV07090 | 5.80 |
| Ø 110 mm | PV07110 | 10.05 |

PVC Adapter



| Bonding & BSP External Thread PN16 | Code | Unit Price Euro |
|------------------------------------|---------|-----------------|
| Ø 50 mm x 1½" | PV17450 | 1.40 |
| Ø 63 mm x 2" | PV17463 | 1.90 |

PVC Fitting



| Double-sided adhesive PN16 | Code | Unit Price Euro |
|----------------------------|---------|-----------------|
| Ø 50 mm | PV50050 | 5.50 |
| Ø 63 mm | PV50063 | 6.40 |

PVC Fitting



| Bonding & BSP External Thread PN16 | Code | Unit Price Euro |
|------------------------------------|---------|-----------------|
| Ø 50 mm x 1½" | PV51450 | 5.50 |
| Ø 63 mm x 2" | PV51463 | 6.50 |

Arus U-PVC Clamp



| | Code | Unit Price Euro |
|---------|------------|-----------------|
| Ø 32 mm | ARUS008-32 | 0.17 |
| Ø 40 mm | ARUS008-40 | 0.24 |
| Ø 50 mm | ARUS008-50 | 0.32 |
| Ø 63 mm | ARUS008-63 | 0.62 |

FLUIDRA TR WATER AND POOL EQUIPMENT INDUSTRY AND TRADE INC.._.

Birlik Organized Industrial Zone, 1st Street, No: 3, 34953 Tuzla/Istanbul

Tel:+90 216 442 19 06 -1907 e-

mail: info@fluidra.com.tr

www.fluidratr.com

www.fluidrakatalog.com

www.fluidra.com.tr