

ORNAMENTAL FOUNTAIN AND

ADDITIONAL EQUIPMENTS



569 NOZZLES

- 570 KOMET NOZZLE
- 650790 **NOZZLE** KAHERMET NOZZLE
- 570 6K0Ö9PKÜOKMNEOTZNUOLZUL
- 570 6T1F1EVNOZULREHEAD NOZZLE
- 651721 **NOZZLE** KARD NOZZLE
- 571 6K1A3KADANNOSZEUDLENAFTSALLI
- 571 S1SLEME NOZZLE
- 651742 _VTOHELLAKLATONLENR
- 572 OZUL MUSHROOM NOZZLE
- 65172 **SCUASLLHYAXVNUHEZZUU**
- 572 **PLOMPALARI** LILY NOZZLE
- 651793 **RBTUUGHNEATMHEHEZRULVALVE1**

670 JETS

- 652713 **BDUAANTS** EBT OFN1LJTORT
- 573 **HANDS** DANCING JET
- 573 NOZZLE SW1NG DANCING
- 573 JET SW1NG DANCEN JET

571 WATER CURTAINS1

- 574 D1J1TAL WATER CURTAIN1
- 574 WATER CURTAIN1
- 575 KNITTING_ELALE
- 575 _ELALE

572 JETS

- 576 COSMOS JET
- 576 PLUG & PLAY FISK1YE SET1
- 577 LAM1NER WATER JET1
- 577 JUMPING EFFECT LAMINATE WATER
- 577 JET DRY POOL SYSTEM NOZZLE S
- 577 DRY POOL SYSTEM NOZZLE L FLAME
- 577 JET
- 577 ROCKET JET

578 ORNAMENTAL POND PUMPS

- 578 DF Submersible Pump
- 578 DALGIÇ DMX S PUMP
- 578 DALGIÇ DMX L PUMP

578 COMPLEMENTARY PRODUCTS

- 578 LEVEL CONTROL SYSTEM
- 578 WIND CONTROL SYSTEM1
- 579 INTERACTIVE SENSOR BUTTONS
- 579 SW1VEL (SPIDER-ROLLING)
- 579 LFS PRE-FILTER
- 580 LF FILTERS
- 580 HFL FILTERS

NOZZLES



KOMET NOZZLE

The Komet nozzle is the most valuable nozzle for any ornamental pond design.

Manufactured from AISI-304 stainless steel, it provides high strength and corrosion resistance, while also giving the nozzle a sleek appearance.

There is a 20° adjustable joint for correcting the nozzle outlet in case of misalignment of the collector or pipes, or for creating a parabola without additional accessories.

Jet Ø (A)	Ba lant1	Code	Unit Price EURO
Comet nozzle			
Ø 4 mm	G 3/8" M	67496	27.00
Ø 6 mm	G 3/8" M	66639	27.00
Ø 8 mm	G 1/2" M	66640	30.00
Ø 10 mm	G 1/2" M	66641	30.00
Ø 12 mm	G 1" M	66642	80.00
Ø 14 mm	G 1" M	66643	80.00
Ø 16 mm	G 1½" M	66644	250.00
Ø 20 mm	G 1½" M	66645	250.00



LARGE KOMET NOZZLE

The Large Komet Nozzle is a nozzle designed for ornamental ponds with tall fountains.

Manufactured entirely from AISI 316 stainless steel, it provides high strength and oxidation resistance, and gives the sprayer a stylish finish.

It features a 10° adjustable coupling to correct the jet outlet in case of misalignment of the collector or pipes.

Jet Ø (A)	Ba lant1	Code	Unit Price EURO
Large Comet Nozzle			
Ø 25 mm	G 2-½" M	66646	1,900.00
Ø 38 mm	G 4" F	66647	4,650.00



66689

66690



71335

FOAM NOZZLE

The foam nozzle produces a very bright and continuous column of water. The fountain effect is independent of the water level and is very resistant to wind, creating a stable, bubbly effect in the ornamental pond.

It also contributes to enriching the water with oxygen.

Two models are available, both made entirely of AISI-316 stainless steel, providing high strength and corrosion resistance and a sleek finish on the nozzle. The 35mm model is available with both a stainless steel version and a plastic inner part.

Jet Ø (A)	Ba lant1	Code	Unit Price EURO
Foam nozzle			
Ø 35 mm	G 1" M	66689	425.00
Ø 50 mm	G 1" M	66690	350.00
Ø 32 mm	G 1" M	71335	90.00

TFE NOZZLE

The TFE nozzle produces a bright and consistent water jet with lower flow requirements compared to similar nozzles of the same diameter. The fountain effect is independent of the water level and highly resistant to wind, creating great uniformity in the fountain.

Manufactured entirely from AISI 316 stainless steel, it provides high strength and corrosion resistance, and offers an elegant finish for ornamental ponds.

Jet Ø (A)	Ba lant1	Code	Unit Price EURO
TFE nozzle			
Ø 25 mm	G 1" M	72475	205.00
Ø 32 mm	G 1 ¼" H	72476	325.00
Ø 40 mm	G 1 ½" H	72477	355.00



NOZZLES

CASCADE NOZZLE



The Cascade Nozzle is a classic jet that mixes water and air to create a non-dispersive, conical column of water visible from all directions. It also contributes to the oxygenation of the water.

Since these nozzles are water level dependent, they must be mounted at a specific height. Strong waves can cause sudden changes in jet height.

Manufactured entirely from AISI 316 stainless steel, it provides high strength and oxidation resistance, and offers a stylish finish for ornamental ponds.

Jet Ø (A)	Ba lant1	Code	Unit Price EURO
Cascade nozzle			
Ø 35 mm	G 1/2" H	66691	165.00
Ø 50 mm	G 1" H	66692	240.00
Ø 80 mm	G 1-½" H	66693	500.00
Ø 100 mm	G 2" H	66694	800.00
Ø 125 mm	G 2-½" H	66698	1,500.00

CASCADE NOZZLE JOINTED



The Cascade Nozzle is a classic jet that mixes water and air to create a non-dispersive, conical column of water visible from all directions. It also contributes to the oxygenation of the water.

Since these nozzles are water level dependent, they must be mounted at a specific height. Strong waves can cause sudden changes in jet height.

Manufactured entirely from AISI 316 stainless steel, it provides high strength and oxidation resistance, and offers a stylish finish for ornamental ponds.

They also have a hinge at their base to accommodate the connection angles.

Jet Ø (A)	Ba lant1	Code	Unit Price EURO
Cascade nozzle joint1			
Ø 35 mm	G 1/2" H	73792	260.00
Ø 50 mm	G 1" H	73793	340.00
Ø 80 mm	G 1-½" H	73794	430.00
Ø 100 mm	G 2" H	73795	600.00
Ø 125 mm	G 2-½" H	73796	700.00

S1SLEME NOZZLE



A fog nozzle is a nozzle that creates a total water distribution that produces fog in seconds.

This innovative nozzle provides a pleasant feeling of freshness and hydration in the air.

Manufactured entirely from AISI 316 stainless steel, it provides high strength and oxidation resistance, and gives the sprayer a stylish finish.

Jet Ø (A)	Ba lant1	Code	Unit Price EURO
Fog nozzle			
Ø 1.4 mm	G 1/4" M	66697	95.00
Ø 1.4 mm	G 1/4" M	70668	95.00
-	G 1/4" / 1"	70669	900.00



NOZZLES

VOLCANO NOZZLE



The volcano nozzle produces a series of parabolic jets reaching varying heights and lengths, creating a visually striking and impressive water effect.

Manufactured entirely from AISI 316 stainless steel, it provides high strength and oxidation resistance, and offers a stylish finish for ornamental ponds.

Jet Ø (A)	Ba lant1	Code	Unit Price EURO
Volcano nozzle			
Ø 1x6mm + 20x3 mm	G 1" M	67204	170.00

MUSHROOM NOZZLE



The mushroom nozzle produces a perfectly laminar and semi-spherical stream of water. It creates a completely continuous bell-shaped effect as it falls.

It is manufactured entirely from AISI 316 stainless steel, which provides high strength and oxidation resistance and a sleek finish on the fountain.

	Ba lant1	Code	Unit Price EURO
Mushroom nozzle	G 1" F	67206	420.00

CALLYX NOZZLE



The Callyx nozzle produces a perfectly laminar and conical effect, resembling a goblet.

Manufactured entirely from AISI316 stainless steel, it provides high strength and oxidation resistance, and offers a stylish finish for ornamental ponds.

Jet Ø (A)	Ba lant1	Code	Unit Price EURO
TFE nozzle			
200 mm	1-1/4" H	73823	375.00
200 mm	1-1/2" H	73824	385.00
230 mm	2" H	73825	525.00
225 mm	2" H	73826	575.00

LILY NOZZLE



The Lily Nozzle produces a range of parabolic adjustable water effects that reach different heights and lengths, creating a beautiful and visible water effect.

Manufactured entirely from AISI316 stainless steel, it provides high strength and oxidation resistance, and offers a stylish finish for ornamental ponds.

Jet Ø (A)	Ba lant1	Code	Unit Price EURO
Lily nozzle			
190x168 mm	1-1/2" M	73810	1,500.00
190x219 mm	2" M	73811	1,750.00
221x254 mm	2-1/2" M	73812	2,350.00
200x254 mm	3" M	73813	2,600.00
255x390 mm	4" M	73814	3,750.00

NOZZLES

BOUQUET NOZZLE



The Bouquet Nozzle produces a series of adjustable parabolic jets reaching different lengths, creating a beautiful and visible water effect.

Manufactured entirely from AISI316 stainless steel, it provides high strength and oxidation resistance, and offers a stylish finish for ornamental ponds.

Jet Ø (A)	Balant1	Code	Unit Price EURO
Bouquet nozzle			
190x129 mm	1-1/4" M	73815	630.00
190x204 mm	2" M	73816	1,200.00
220x254 mm	3" M	73817	1,300.00
220x254 mm	3" M	73818	1,600.00

JETS

DANCING JET



The rhythmic and graceful movements of the dancing jet, combined with the oscillations of the water, contribute to the creation of new sensations and dynamism through the movement of the water.

The combination of light and water effects makes it innovative and spectacular, and undoubtedly offers effects that will entertain the audience.

The dancing jet follows any rhythm thanks to its axial movement.

This jet's infinite number of sequences allows for the creation of truly spectacular displays.

	Code	Unit Price EURO
Dancing jet	67652	18,000.00

DANCING JET NOZZLE



The Dance Nozzle is an ideal nozzle for combining with Dance Jet and Swing Dance Jet equipment. Its versatility in nozzle lengths allows it to adapt to different types of lighting.

Made entirely of nickel-plated brass and AISI 316 stainless steel, which provides high strength and oxidation resistance, it gives the ornamental pond a stylish look.

Jet Ø (A)	Balant1	Code	Unit Price EURO
Dancing jet nozzle Ø			
16 mm	G 1-1/2" M	67646	500.00
Ø 16 mm	G 1-1/2" M	67647	600.00
Ø 20 mm	G 1-1/2" M	67648	700.00
Ø 20 mm	G 1-1/2" M	67649	800.00

SWING DANCING JET



Swing Dancing presents a spectacle of jet effects, water, and a magical combination of light, color, and graceful movement that expresses emotions and feelings, all creating the impression of a ballet performed on water.

The versatile jet nozzle produces a multitude of shapes and forms, creating unique movements. The jet can be programmed to go faster or slower to appear as if it's dancing on the water with dynamic, graceful movements.

	Code	Unit Price EURO
Swing Dancing Jet	67645	48,000.00

JETS



SWING Z DANCING JET

The Swing Dancing jet effect presents a spectacle of light, color, and graceful movement that expresses emotions and feelings through a magical combination of water and light, all creating the impression of a ballet performed on water.

The versatile nozzle produces numerous shapes and forms, creating unique movements. The jet can be programmed to go faster or slower to appear as if it's dancing on the water with dynamic, graceful movements.

With the FUN nozzle and the rotation of the Z-axis, we can create incredible water effects.

	Code	Unit Price EURO
Swing Z Dancing Jet	72292	45,000.00

WATER CURTAINS



D1J1TAL WATER CURTAIN1

Historically, murals have been a way to represent all sorts of elements. Through the combination of water and light, these representations will be given a new meaning in an innovative and interactive way.

The digital water curtain offers new technologies that can instantly represent shapes by interacting with a tablet device. Numerous geometric combinations, organic textures and text, water, and light are all incorporated into an interactive curtain concept where you can draw and create anything you want.

Due to the force of gravity, the recommended height should be less than 4 meters. Digital screens are perfect for advertising.

	Code	Unit Price EURO
Digital Water Curtain	66548	29,000.00



WATER CURTAIN1

This decorative effect creates a large water curtain that serves as a perfect surface for projecting videos and other images. The Water Curtain is large enough to project a standard panoramic HDTV image (16:9).

Combining this decorative feature with a video or laser projector will create a visually impressive effect..

* Production on demand

	Code	Unit Price EURO
Water Curtain	65551	3,400.00



LINEAR LED WATER CURTAIN1

This decorative effect creates a large water curtain that serves as a perfect surface for projecting videos and other images. It features RGB+W LED lighting with individual control of four LED lights per meter of the water curtain via DMX protocol.

The combination of the waterfall and integrated lighting will create a visually impressive effect.

	Code	Unit Price EURO
Linear LED Water Curtain	73346	6,780.00



WATER CURTAIN1

This decorative effect creates a large water curtain that serves as a perfect surface for projecting videos and other images. The Water Curtain is large enough to project a standard panoramic HDTV image (16:9).

Combining this decorative feature with a video or laser projector will create a visually stunning effect.

	Code	Unit Price EURO
Water curtain	66550	17,000.00

WATERFALLS

KNITTING WATERFALLS



This woven waterfall creates a continuous effect of falling water, producing a gentle, calming, and serene sound. It recreates small water waves, creating a pleasant and captivating hypnotic effect.

With its state-of-the-art design, it produces a continuous, silent, and splash-free, perfectly even stream of water throughout the entire network. Its great appeal and integration with the environment make it an ideal decorative solution for interior spaces in hotels, shopping malls, and events.

Made from AISI 316 stainless steel to guarantee maximum resistance to corrosion and achieve a high-quality surface. The decorative effect can be maximized by adding a lighting system or digital projection.

A special project is being undertaken. Please contact our project team.

WATERFALL



This decorative feature creates a continuous waterfall. As a result, it produces the soft, calming sound of waves on the beach. It can be installed both indoors and outdoors.

Its state-of-the-art design creates a perfectly uniform water flow throughout the entire waterfall.

Manufactured from AISI 316 stainless steel to provide maximum resistance to corrosion and achieve a high-quality surface.

It is possible to enhance the decorative effect by adding a lighting system.

	Code	Unit Price EURO
_waterfall	66552	3,300.00

JETS

COSMOS JET



Cosmos produces a series of perfectly spherical water droplets that float in the air and shoot water up and down. These movements mimic the randomly moving cosmic water particles.

The lighting enhances the effect by producing a random display of differently colored particles.

Cosmos can alter droplets with another astonishing effect: it can create small, extremely fast vertical jets, high-speed waterfalls, waves, etc.

	Code	Unit Price EURO
Cosmos jet	66553	2,400.00

PLUG & PLAY SPRINKLER SET



The Plug and Play sprinkler set allows you to add a complete small sprinkler to your garden. It combines comfort, design and energy efficiency in a product that is easy and quick to install.

A 10-meter cable, a nozzle, and a multi-color RGB light are included. To configure the sprinkler to your preference, the nozzle can be replaced with any nozzle from our plug-and-play series.

High-efficiency RGB LEDs with a color-changing sequence bring color to your pool. The jet water height can be adjusted up to 3.5 meters depending on the nozzle installed.

	Code	Unit Price EURO
Kit Komet D12	66979	3,300.00
Kit Foam 35	66980	3,200.00
Kit Volcano	66981	3,400.00
Kit Mushroom	66982	3,500.00

JETS

LAMINER WATER JET



A parabolic laminar nozzle that doesn't spill a single drop of water. From beginning to end, it follows a perfect parabolic path based on the laws of fluid dynamics. The jet scatters light into the water as it follows its path. It illuminates only the water and does not cause light pollution. Made of AISI 316 stainless steel to provide maximum resistance to corrosion and a high-quality surface finish.

There is also a bouncing effect option that launches small streams of water along a parabolic path.

Lighting type	Voltage (V)	Code	Unit Price EURO
Laminar jet			
RGB - DMX	24 VDC	66559	1,900.00
RGB	24 VDC	66559RGB	1,900.00
RGB - DMX	24 VAC	66561	2,850.00

JUMPING EFFECT LAMINATED WATER JET



A parabolic laminar nozzle that doesn't splash a single drop of water. From beginning to end, it follows a perfect parabolic path based on the laws of fluid dynamics. The jet scatters light into the water as it follows its path. It only illuminates the water and does not cause light pollution. There is also an option for a bouncing effect that launches small water particles in a parabolic longitudinal path. It is made of AISI 316 stainless steel to provide maximum resistance to corrosion and a high-quality surface finish.

	Code	Unit Price EURO
Skipping effect laminar water jet S	66560	3,500.00
Skipping effect laminar water jet L	66562	6,800.00

DRY POOL SYSTEM NOZZLE S



The Dry Pool System Nozzle S is a dynamic nozzle ideal for dry ornamental pools, producing fast water shows with separate controls for each nozzle installed.

This jet's design allows for changes in conditions during installation without water hammer.

It has many models to choose from, with options for both round and square designs.

	Code	Unit Price EURO
Dry Dock System Nozzle S		
3W	66569	1,650.00
6W	73358	1,750.00
16W	73360	2,450.00
6W	73357	2,300.00
12W	73359	2,475.00
16W	73361	2,650.00
3W	73351	1,650.00
6W	73353	1,750.00
16W	73355	2,450.00
6W	73352	2,300.00
12W	73354	2,450.00
16W	73356	2,500.00

DRY POOL SYSTEM NOZZLE L



The Dry Pool System Nozzle L is a dynamic jet ideal for interactive fountains, such as dry ornamental pools, to produce rapid water shows with separate control for each installed nozzle. The design of this jet allows for changes in conditions during installation without water hammer.

For dry ornamental ponds, there is an option with a 316 stainless steel casing and integrated LED RGB-DMX floodlight.

	Code	Unit Price EURO
Dry Dock System Nozzle L Dry Dock	66570	1,600.00
System Nozzle L Housing	66572	1,700.00

JETS

ROCKET JET



Because the rocket jet can lift water up to 50 meters, it creates the effect of a water explosion rising from the ground in one second, reaching the height of tall buildings.

The burst of water creates a perfect vertical line that will be the center of attention everywhere.

The lighting emphasizes the height of the water to transform it into a powerful beam of light that rises at high speeds and creates colorful streaks on the water's surface.

Combining several units of this effect will create spectacular high-speed sequences.

Dimensions (L x W x H) [mm]	Code	Unit Price EURO
Rocket jet		
358 x 248 x 727	66564	2,600.00
530 x 515 x 887	66565	5,700.00
642 x 514 x 1558	66566	7,800.00

ROCKET JET HORIZONTAL



Because the rocket jet can lift water horizontally up to 50 meters, it creates the effect of a water explosion rising from the ground in one second, reaching the height of tall buildings.

The burst of water creates a perfect vertical line that will be the center of attention everywhere.

The lighting emphasizes the height of the water to transform it into a powerful beam of light that rises at high speeds and creates colorful streaks on the water's surface.

Combining several units of this effect will create spectacular high-speed sequences.

	Code	Unit Price EURO
Rocket jet horizontal	66563	4,050.00

FLAME JET1



The stylized, long, and controlled jet of fire creates a dazzling effect in the ornamental pool! Fire has always been a greater-than-life attribute radiating power and strength.

Water and fire, two opposing elements that combine perfectly when the magic show is performed, create an explosive combination and the most impressive effect you can imagine.

The rigorous work led to a new concept: various colors for the Fire jet: blue, yellow, green...

Because the system does not run on gas or fuel oil, the flames do not produce odor or smoke. The liquid that creates the smokeless flame is readily available everywhere.

	Code	Unit Price EURO
Flame jet	66567	LFS

ORNAMENTAL POND PUMPS

SUBMERSIBLE DMX S PUMP



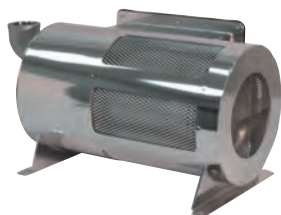
The Submersible DMX Dynamic High-Speed Pump S allows for individual control of jet bursts, creating numerous effects and shapes in dynamic fountains.

The device includes a height adjustment system via the DMX protocol, which simplifies jet control and significantly reduces the size and cost of electrical panels.

	Code	Unit Price EURO
DMX S pump	67410	1,600.00

ORNAMENTAL POND PUMPS

SUBMERSIBLE DMX L PUMP

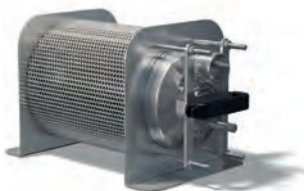


The Submersible DMX Variable Speed Pump allows for the creation of numerous effects and noise levels in dynamic fountains by controlling jet heights individually.

The device incorporates an altitude adjustment system via the DMX protocol, which simplifies jet control and significantly reduces the size and cost of electrical panels.

	Code	Unit Price EURO
DMX L pump	67411	4,800.00

DF Submersible Pump



DF submersible pumps feature a pre-filter with a large filtering surface, which helps ensure the device operates correctly. This significantly increases the filter cleaning maintenance interval.

Includes supports to facilitate horizontal pump installation.

There are various pump models available to suit the needs of each installation.

Made from AISI 304 stainless steel, this model is extremely robust and resistant to corrosion.

Dimensions (L x W x H) [mm]	Nominal Voltage [VAC]	Code	Unit Price EURO
DF Submersible Pump			
402 x 232 x 234	230~3 VAC	70173	2,250.00
417 x 232 x 234	230~3 VAC	70175	2,320.00
447 x 232 x 234	230~3 VAC	70177	2,320.00
447 x 232 x 234	230~3 VAC	70179	2,750.00
402 x 232 x 234	400~3 VAC	70180	2,420.00
417 x 232 x 234	400~3 VAC	70181	2,500.00
447 x 232 x 234	400~3 VAC	70184	2,600.00
447 x 232 x 234	400~3 VAC	70190	2,660.00

COMPLEMENTARY PRODUCTS

LEVEL CONTROL SYSTEM



This control system offers a complete solution for monitoring the water level in any ornamental pond. It enables automatic filling of the pond and acts as a safety system for the pumps in case the pond's water level becomes too low.

The level control sensor is a very robust model, resistant to oxidation and manufactured entirely from AISI 316 stainless steel.

The Adjustable Level Control Sensor is delivered with all sensor rods in standard and equal lengths, allowing the customer to adjust the length according to their project.

	Code	Unit Price EURO
Level control sensor	66636	470.00
Level control unit	66637	700.00
Adjustable level sensor	67444	560.00

WIND CONTROL SYSTEM 1

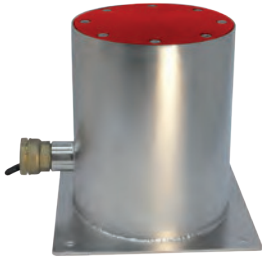


This wind control system is the best way to prevent water loss from the jets, thus preventing the area around the fountain and the spectators of the fountain show from getting wet due to the effect of the wind.

It can be operated in three modes depending on wind speed: normal, reduced spray jet height, and off in case of very strong winds.

	Code	Unit Price EURO
Wind control system		
Wind control sensor	66577	1,050.00
Wind control unit	66578	1,050.00

1 INTERACTIVE SENSOR BUTTONS



Interactive sensors are a perfect addition to any ornamental pond.

Each sensor can generate a different variation in the ornamental pond's operation in real time, ensuring guaranteed fun for the whole family.

ski jets

	Code	Unit Price EURO
Interactive sensor buttons system		
Black	66574	2,100.00
Blue	66574CL02	2,100.00
Green	66574CL03	2,100.00
Red	66574CL4	2,100.00

SWIVEL (SWIFT)



The swivel is a perfect adapter for all types of nozzles. It corrects imperfections made during the development process. The swivel also allows any type of nozzle to be positioned at any desired angle.

Manufactured entirely from AISI-316 stainless steel, it provides high strength and oxidation resistance, and offers an elegant finish for ornamental ponds.

This ba lant1s1	Nozzle ba lant1s1	Code	Unit Price Euro
Swivel (f1rdöndü)			
1"	1"	66930	240.00
1 1/2"	1 1/2"	73798	250.00
2"	2"	73799	400.00

LFS PREFILTER



The LFS pre-filter is installed at the connections of the suction lines to protect appliances and the water circuit from coarse deposits.

It is versatile because it can be mounted directly onto a pipe and easily screwed to the ground.

It has a large filter surface area, thus increasing the filter cleaning maintenance interval.

Made entirely of AISI 316 stainless steel, this model is extremely robust and resistant to rust.

	Code	Unit Price EURO
LFS Pre-filter	73348	925.00

TA_MA



This ta_ma is suitable for all types of ornamental ponds. It is ideal for maintaining a constant water level and preventing flooding.

There are two different models available, depending on the pool surface area.

The standard model is produced in sizes ranging from 10 cm to 100 cm, but other sizes can be produced upon request.

Both models are made from AISI 316 stainless steel to provide high protection against rust and weather conditions.

	Code	Unit Price EURO
Ta_ma		
Ta_ma 2"	66610LXXXX	740.00
Ta_ma 3"	66611LXXXX	940.00

COMPLEMENTARY PRODUCTS

LF FILTERS



Code Unit Price
EURO

	Code	Unit Price EURO
Cepex Manual LF Filters 3/4"B		
Screen 130 Micron - 5 m3/H 1"B	34910	15.00
Screen 130 Micron - 6 m3/H 1 1/4"B	34911	31.00
Screen 130m - 10 m3/H 1 1/2"B Screen	04132	33.00
130m - 14 m3/H 2"B screen 130	04133	50.00
Micron - 25 m3/h	34912	55.00

TECHNICAL SPECIFICATIONS

	CEPEX MANUAL LF FILTERS				
Code	34910	34911	04132	04133	34912
Ba lant1	3/4"	1"	1 1/4"	1 1/2"	2"
Maximum flow rate	5 m3/h - 22 gpm	6 m3/h - 26 gpm	10 m3/h - 44 gpm	14 m3/h - 62 gpm	25 m3/h - 110 gpm
Filtration surface (mesh)	160 cm2- 25 in2	160 cm2- 25 in2	265 cm2- 41 in2	265 cm2- 41 in2	485 cm2- 75 in2
Maximum temperature / pressure	8 bar/116 psi - 60°C/140°F	8 bar/116 psi - 60°C/140°F	8 bar/116 psi - 60°C/140°F	8 bar/116 psi - 60°C/140°F	8 bar/116 psi - 60°C/140°F

HFL FILTERS



Code Unit Price
EURO

	Code	Unit Price EURO
Cepex Manual HLF Filters 2 B Screen		
130 Micron - 30m3/H 2 large B Screen	62271	240.00
130m - 30m3/H 3 B Screen 130 Micron -	62273	300.00
50m3/H 3 large B Screen 130 Micron -	62275	250.00
50m3/H	62277	325.00

TECHNICAL SPECIFICATIONS

	CEPEX MANUAL HLF FILTERS			
Code	62271	62273	62275	62277
Connection	2"	2" Large	3"	3" Large
Maximum flow rate	30 m3/h - 132 gpm	30 m3/h - 132 gpm	50 m3/h - 220 gpm	50 m3/h - 220 gpm
Filtration surface (mesh)	650 cm2- 101 in 2	960 cm2- 149 in2	650 cm2- 101 in 2	960 cm2- 149 in2
Maximum temperature / pressure	6 bar/90 psi - 60°C/140°F	6 bar/90 psi - 60°C/140°F	6 bar/90 psi - 60°C/140°F	6 bar/90 psi - 60°C/140°F

