

PVC FITTINGS AND VALVES



36	PVC FITTINGS
36	PVC Elbows
37	PVC Adapters and
41	Fittings, Adapters and
42	Blind Plugs Checkval er
43	Ball and Butterfly Valves
45	Electric Actuated Ball Valves
46	Adhesives
47	Gaskets and Check Valves

CHECK VALVE CLEAR SER1S1

FULL VISIBILITY
AND EASY MAINTENANCE



**FULL WING
SPICY_**

Minimum pressure loss



COMPLETE TRANSPARENCY
Full in any position
visibility



**EASY AND FAST
CARE**

Removable lid and
removable o-rings

PVC FITTINGS

PVC 90° elbow

Glue PN16



	Code	Standard Package	standard weight kg	Standard volume m ³	Unit Price EURO
Ø 50 mm	32588	70	8.67	0.0408	2.10
Ø 63 mm	32589	36	7.86	0.0408	3.15
Ø 75 mm	01718	21	8.6	0.0408	6.30
Ø 90 mm	01719	12	8.7	0.0408	9.70
Ø 110 mm	01720	14	17.8	0.082	18:30

PVC 45°

Glue PN16



	Code	Standard Package	standard weight kg	Standard volume m ³	Unit Price EURO
Ø 50 mm	32590	40	3.72	0.0204	2.50
Ø 63 mm	32591	20	3.56	0.0204	3.80
Ø 75 mm	01752	25	8.2	0.0408	6.90
Ø 90 mm	01753	15	8.3	0.0408	10.50
Ø 110 mm	01754	16	13.8	0.082	16.00

PVC Tee 90°

PN16



	Code	Standard Package	standard weight kg	Standard volume m ³	Unit Price EURO
Ø 50 mm	32592	48	8.95	0.0408	2.95
Ø 63 mm	32593	30	9.73	0.0408	4.45
Ø 75 mm	01786	15	8.4	0.0408	8.60
Ø 90 mm	01787	8	7.4	0.0408	14.00
Ø 110 mm	01788	10	16.4	0.082	27.60

PVC

Glue PN16



	Code	Standard Package	standard weight kg	Standard volume m ³	Unit Price EURO
Ø 50 mm	32594	60	4.48	0.0204	2.26
Ø 63 mm	32595	35	3.98	0.0204	3.26
Ø 75 mm	01878	14	3.5	0.02	6.70
Ø 90 mm	01879	18	7.6	0.0408	7.62
Ø 110 mm	01880	12	8.5	0.0408	11:30

PVC reduction

Glue PN16



	Code	Standard Package	Standard weight kg	Standard volume m ₃	Unit Price EURO
Ø 63 mm x 50 mm	32596	48	3.08	0.0102	1.79
Ø 75 mm x 63 mm	01928	28	2.2	0.01	2.31
Ø 75 mm x 50 mm	18685	28	3.3	0.01	3.31
Ø 90 mm x 75 mm	01929	36	5.1	0.02	3.52
Ø 90 mm x 63 mm	18687	36	6	0.02	5.25
Ø 90 mm x 50 mm	18688	36	6.4	0.02	5.25
Ø 110 mm x 90 mm Ø	01930	16	4.3	0.02	6.62
110 mm x 75 mm Ø	18689	16	5.1	0.02	9.80
110 mm x 63 mm	18690	16	5	0.02	9.95

PVC adapter nipple

Glue & BSP d1_di_li PN16



	Code	Standard Package	Standard weight kg	Standard volume m ₃	Unit Price EURO
Ø 50 mm x 40 mm x 1½"	32597	24	2.48	0.0102	1.79
Ø 63 mm x 50 mm x 2"	32598	38	5.84	0.0204	2.63
Ø 75 mm x 63 mm x 2½"	02091	24	4.7	0.02	3.80
Ø 90 mm x 75 mm x 3"	02094	12	3.6	0.02	7.00
Ø 110 mm x 90 mm x 4"	02097	6	3.8	0.02	16.55

PVC adapter

Glue & BSP d1_di_li PN16



	Code	Standard Package	Standard weight kg	Standard volume m ₃	Unit Price EURO
Ø 50 mm x 1½"	32599	48	3.27	0.0102	1.58
Ø 63 mm x 2"	32600	50	5.6	0.0204	2.10
Ø 75 mm x 2½"	02108	24	6.1	0.02	5.70
Ø 90 mm x 3"	02109	28	11.7	0.0408	12.50
Ø 110 mm x 4"	02110	10	6.3	0.0408	19.35

PVC fitting

Glue PN16



	Code	Standard Package	Standard weight kg	Standard volume m ₃	Unit Price EURO
Ø 50 mm	32601	30	5.8	0.0204	5.15
Ø 63 mm	32602	12	4.44	0.0204	8.40
Ø 75 mm	02333	16	8.7	0.0408	22.70
Ø 90 mm	02334	12	9.5	0.0408	36.40
Ø 110 mm	02335	5	7.6	0.0408	50.75

PVC fitting

GluePN16



	Code	Standard Package	Standard weight kg	Standard volume m ₃	Unit Price EURO
Ø 50 mm x 1½"	32603	30	6.7	0.0204	5.50
Ø 63 mm x 2"	32604	12	5.24	0.0204	9.70

PVC FITTINGS

PVC 90° elbow



Glue

	Code	Standard Package	Standard weight kg	Standard volume m ³	Unit Price EURO
Ø 20 mm PN16	01712	140	2.8	0.010	0.68
Ø 25 mm PN16	01713	80	2.8	0.010	0.79
Ø 32 mm PN16	01714	90	5.5	0.020	1.26
Ø 40 mm PN16	01715	55	5.2	0.020	1.76
Ø 50 mm PN16	01716	60	9.5	0.041	2.05
Ø 63 mm PN16	01717	36	10.7	0.041	3.10
Ø 75 mm PN16	01718	21	9.2	0.041	6.30
Ø 90 mm PN16	01719	12	9.3	0.041	9.70
Ø 110 mm PN16	01720	14	19.1	0.082	18.30
Ø 125 mm PN16	01721	10	18.3	0.082	34.00
Ø 140 mm PN16	01722	5	12.1	0.082	56.70
Ø 160 mm PN10	01723	4	10.8	0.082	57.80
Ø 200 mm PN10	01724	3	15.0	0.122	85.00
Ø 225 mm PN10	01725	2	13.8	0.122	152.00
Ø 250 mm PN10	01726	2	21.1	0.122	258.00
Ø 315 mm PN10	01727	1	22.4	0.163	544.00
Ø 400 mm PN5	34807	-	-	-	1,397.00

PVC 45° elbow



Glue

	Code	Standard Package	standard weight kg	Standard volume m ³	Unit Price EURO
Ø 20 mm PN16	01746	140	2.3	0.010	0.90
Ø 25 mm PN16	01747	80	2.7	0.010	1.16
Ø 32 mm PN16	01748	100	5.4	0.020	1.61
Ø 40 mm PN16	01749	60	4.8	0.020	2.10
Ø 50 mm PN16	01750	80	10.3	0.041	2.47
Ø 63 mm PN16	01751	45	9.6	0.041	4.05
Ø 75 mm PN16	01752	25	8.8	0.041	6.95
Ø 90 mm PN16	01753	15	8.9	0.041	10.50
Ø 110 mm PN16	01754	16	15.2	0.082	16.00
Ø 125 mm PN16	01755	12	17.6	0.082	30.50
Ø 140 mm PN16	01756	8	14.8	0.082	48.30
Ø 160 mm PN10	01757	5	10.4	0.082	55.70
Ø 200 mm PN10	01758	4	14.7	0.122	84.00
Ø 225 mm PN10	01759	2	10.5	0.122	153.50
Ø 250 mm PN10	01760	2	16.4	0.122	287.00
Ø 315 mm PN10	01761	1	16.5	0.163	651.00
Ø 400 mm PN5	34808	-	-	-	1,176.00

Glue



	Code	Standard Package	standard weight kg	Standard volume m ³	Unit Price EURO
Ø 25 mm PN16	20144	40	2.5	0.010	2.22
Ø 32 mm PN16	20145	20	2.1	0.010	3.36
Ø 40 mm PN16	20146	30	5.2	0.020	5.25
Ø 50 mm PN16	02235	32	9.6	0.041	7.30
Ø 63 mm PN16	02236	16	8.7	0.041	9.96
Ø 75 mm PN16	27958	16	-	-	41.70
Ø 90 mm PN16	22581	12	12.1	0.082	55.70
Ø 110 mm PN16	22582	6	10.6	0.082	89.50



PVC Tee 90°

Glue

	Code	Standard Package	standard weight kg	Standard volume m ³	Unit Price EURO
Ø 20 mm PN16	01780	100	2.6	0.010	0.80
Ø 25 mm PN16	01781	50	2.2	0.010	1.05
Ø 32 mm PN16	01782	60	4.7	0.020	1.55
Ø 40 mm PN16	01783	40	5.0	0.020	2.50
Ø 50 mm PN16	01784	48	11.7	0.041	2.95
Ø 63 mm PN16	01785	24	10.7	0.041	4.10
Ø 75 mm PN16	01786	15	9.0	0.041	8.56
Ø 90 mm PN16	01787	8	8.2	0.041	14.00
Ø 110 mm PN16	01788	10	17.7	0.082	27.60
Ø 125 mm PN16	01789	7	17.5	0.082	47.65
Ø 140 mm PN16	01790	4	12.4	0.082	69.95
Ø 160 mm PN10	01791	3	13.5	0.082	70.40
Ø 200 mm PN10	01792	2	14.9	0.122	131.50
Ø 225 mm PN10	01793	2	19.6	0.122	193.50
Ø 250 mm PN10	01794	1	14.5	0.122	375.00
Ø 315 mm PN10	01795	1	27.5	0.163	577.00
Ø 400 mm PN5	05328	1	41.2	0.300	1,764.00



PVC Tee 90°

Glue

	Code	Standard Package	standard weight kg	Standard volume m ³	Unit Price EURO
Ø 50 mm x Ø 40 mm	01820	48	10.3	0.080	4.10
PN16 Ø 50 mm x Ø 32 mm	01821	48	10.3	0.080	4.10
mm PN16 Ø 50 mm x Ø 25 mm	01822	54	11.3	0.080	4.10
PN16 Ø 63 mm x Ø 50 mm	01825	28	10.6	0.041	6.95
Ø 40 mm PN16 Ø 63 mm x Ø 32 mm	01826	30	11.3	0.041	6.95
PN16 Ø 63 mm x Ø 25 mm	01827	30	11.1	0.041	6.95
mm x Ø 25 mm PN16 Ø 63 mm	01828	30	11.0	0.041	6.95
63mm mm x Ø 90 mm	01829	16	9.4	0.041	11.55
PN16 Ø 110 mm x Ø 75 mm	01830	18	10.7	0.041	12.60
mm PN16 Ø 110 mm x Ø 63 mm	01833	9	8.9	0.041	21.00
PN16 Ø 110 mm x Ø 63 mm	01834	9	9.1	0.041	21.00
x Ø 50 mm PN16 Ø 125 mm	01835	9	9.4	0.041	21.00
mm x Ø 110 mm PN16 Ø 125 mm	01837	11	17.2	0.082	29.40
mm x Ø 90 mm	01838	12	18.0	0.082	29.40
PN16 Ø 125 mm x Ø 75 mm	01839	12	17.5	0.082	29.40
mm PN16 Ø 125 mm x Ø 63 mm	01840	12	17.5	0.082	29.40
63 mm PN16 Ø 140 mm	01841	7	16.3	0.082	50.40
x Ø 125 mm PN16 Ø 140 mm	01842	8	18.0	0.082	50.40
mm x Ø 110 mm PN16 Ø 140 mm	01843	8	17.0	0.082	50.40
140 mm x Ø 90 mm	01844	8	17.2	0.082	50.40
PN16 Ø 140 mm x Ø 75 mm	01845	5	11.5	0.082	75.00
mm PN16 Ø 160 mm x Ø 140 mm	01846	6	16.0	0.082	75.00
140 mm PN10 Ø 160 mm x Ø 125 mm	01847	6	15.5	0.082	75.00
PN10 Ø 160 mm x Ø 125 mm	01848	6	15.2	0.082	75.00
mm x Ø 110 mm PN10 Ø 160 mm	07688	3	12.5	0.082	89.25
160 mm x Ø 90 mm	07689	3	12.2	0.082	89.25
PN10	07690	3	12.0	0.082	89.25
	07691	3	1.07	0.082	89.25

PVC FITTINGS

PVC Socket Collar



	Code	Standard Package	Standard weight kg	Standard volume m ³	Unit Price EURO
Ø 25 mm x ¾"	06052	100	5.0	0.020	2.05
Ø 32 mm x 1"	20596	40	3.8	0.020	2.26
Ø 40 mm x 1"	05140	40	5.0	0.020	2.47
Ø 50 mm x 1"	05143	70	10.4	0.041	2.95
Ø 63 mm x 1"	05146	50	13.0	0.041	4.36
Ø 75 mm x 1"	05148	50	16.3	0.082	5.70
Ø 90 mm x 1"	05152	40	15.2	0.082	7.00
Ø 110 mm x 1"	06013	40	19.2	0.082	9.95

PVC Fitting

Glue



	Code	Standard Package	Standard weight kg	Standard volume m ³	Unit Price EURO
Ø 20 mm PN16	02327	80	3.3	0.010	2.57
Ø 25 mm PN16	02328	40	2.9	0.010	2.89
Ø 32 mm PN16	02329	30	3.0	0.010	4.10
Ø 40 mm PN16	02330	40	6.8	0.020	4.95
Ø 50 mm PN16	02331	30	5.8	0.020	5.90
Ø 63 mm PN16	02332	12	4.4	0.020	8.00
Ø 75 mm PN16	02333	16	9.3	0.041	22.70
Ø 90 mm PN16	02334	12	10.1	0.041	36.40
Ø 110 mm PN16	02335	5	8.2	0.041	50.80

PVC fitting

Glue



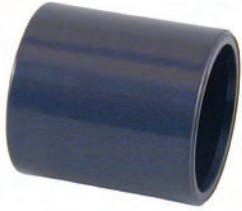
	Code	Standard Package	Standard weight kg	Standard volume m ³	Unit Price EURO
Ø 20 mm Ø 90	02353	80	3.6	0.010	3.42
mm x 3" PN16 Ø	02354	40	3.0	0.010	3.80
110 mm x 4"	02355	30	3.5	0.010	4.65
PN16	02356	36	6.7	0.020	5.70
	02357	30	6.7	0.020	5.80
	02358	12	5.2	0.020	8.50
	02359	16	8.2	0.041	23.65
	02360	10	10.0	0.041	38.90
	02361	4	6.7	0.041	57.80

PVC clamp



	Code	Standard Package	Standard weight kg	Standard volume m ³	Unit Price EURO
Ø 50 mm	02140	100	2.8	0.020	1.60
Ø 63 mm	02141	50	2.8	0.020	1.73
Ø 75 mm	02142	40	2.9	0.020	2.55
Ø 90 mm	02143	25	3.1	0.020	2.77
Ø 110 mm	08916	30	4.1	0.020	7.30
Ø 125 mm	08917	25	4.2	0.020	7.65
Ø 140 mm	10956	-	-	0.020	8.00
Ø 160 mm	08918	10	3.2	0.020	9.60
Ø 200 mm	08919	8	3.6	0.020	11.60

PVC manchon^{Glue}



	Code	Standard Package	Standard weight kg	Standard volume m ³	Unit Price EURO
Ø 20 mm PN16	01872	200	2.9	0.010	0.77
Ø 25 mm PN16	01873	120	2.78	0.010	0.95
Ø 32 mm PN16	01874	160	5.8	0.020	1.08
Ø 40 mm PN16	01875	80	5.0	0.020	1.60
Ø 50 mm PN16	01876	56	5.2	0.020	2.20
Ø 63 mm PN16	01877	34	5.4	0.020	3.33
Ø 75 mm PN16	01878	14	3.9	0.020	6.75
Ø 90 mm PN16	01879	18	8.2	0.041	7.65
Ø 110 mm PN16	01880	12	9.1	0.041	11:30
Ø 125 mm PN16	01881	16	17.0	0.082	20.20
Ø 140 mm PN16	01882	12	16.7	0.082	30.00
Ø 160 mm PN10	01883	6	9.2	0.082	35.80
Ø 200 mm PN10	01884	3	9.2	0.082	50.40
Ø 225 mm PN10	01885	4	14.3	0.122	99.00
Ø 250 mm PN10	01886	2	10.9	0.082	188.00
Ø 315 mm PN10	01887	1	11.4	0.122	282.00

PVC reduction

Glue



	Code	Standard Package	Standard weight kg	Standard volume m ³	Unit Price EURO
Ø 25 mm x Ø 20 mm	01915	200	1.2	0.010	0.58
PN16 Ø 32 mm x Ø 25	01916	200	1.3	0.010	0.60
mm PN16 Ø 32 mm x Ø	01917	200	2.8	0.010	0.82
20 mm PN16 Ø 40 mm x	01918	120	2.3	0.010	0.91
Ø 32 mm PN16 Ø 40 mm	01919	120	3.1	0.010	1.21
x Ø 25 mm PN16 Ø 40	01920	120	3.1	0.010	1.21
mm x Ø 20 mm PN16 Ø	01921	60	2.1	0.010	1.21
50mm x Ø 63 mm PN16	01922	60	2.7	0.010	1.79
Ø 90 mm x Ø 75 mm	01923	60	3.1	0.010	1.79
PN16 Ø 110 mm x Ø 90	01925	48	3.2	0.010	1.79
mm PN16 Ø 125 mm x Ø	01926	40	3.4	0.010	2.32
110 mm PN16 Ø 140 mm	01927	40	3.3	0.010	2.32
x Ø 125 mm PN16 Ø 160	01928	28	2.4	0.010	2.32
mm x Ø 140 mm PN10 Ø	01929	36	5.4	0.020	3.52
200 mm x Ø 180 mm	01930	16	4.6	0.020	6.62
PN10 Ø 200 mm x Ø 160	01931	24	7.2	0.041	8.20
mm PN10 Ø 225 mm x Ø	01932	20	7.1	0.041	15.20
200 mm PN10 Ø 225 mm	01933	12	7.4	0.041	20.60
x Ø 160 mm PN10 Ø 250	01934	6	6.0	0.041	38.70
mm x Ø 225 mm PN10 Ø	01935	6	8.2	0.041	38.70
250 mm x Ø 200 mm	01936	7	11.1	0.081	50.40
PN10 Ø 315 mm x Ø 250	01937	7	16.7	0.081	50.40
mm PN10 Ø 315 mm x Ø	01938	6	11.3	0.081	78.00
225 mm PN10	01939	6	16.7	0.081	79.00
	01940	3	16.4	0.081	260.00
	01941	3	17.1	0.081	270.00

PVC adapter

Glue



	Code	Standard Package	Standard weight kg	Standard volume m ³	Unit Price EURO
Ø 20 mm x 1½"	02102	200	3.0	0.010	1.00
PN10 Ø 25 mm	02103	120	2.7	0.010	1.53
Ø 90 mm x 3"	02104	60	2.6	0.020	1.80
PN10	02105	80	5.1	0.020	1.85
	02106	72	6.5	0.020	2.25
	02107	50	7.2	0.020	3.00
	02108	24	6.5	0.020	5.70
	02109	28	12.3	0.041	12.50

PVC FITTINGS

Ø 110 mm x 4" PN10

02110

10

6.9

0.041

19.40

PVC adapter

Glue



	Code	Standard Package	Standard weight kg	Standard volume m ³	Unit Price EURO
Ø 20 mm x 1½"	01889	400	3.0	0.010	1.37
PN10 Ø 25 mm	01890	240	2.7	0.010	1.60
90 mm x 3"	01891	144	2.6	0.020	1.80
PN10 Ø 110 mm	01892	40	5.1	0.020	2.40
x 4" PN10	01893	120	6.5	0.020	3.00
	01894	60	7.2	0.020	4.25
	01895	36	6.5	0.020	9.40
	01896	18	12.3	0.041	13.80
	01897	8	6.9	0.041	22.00

PVC blind plug

Glue



	Code	Standard Package	Standard weight kg	Standard volume m ³	Unit Price EURO
Ø 20 mm PN16	01943	200	2.9	0.010	0.58
Ø 25 mm PN16	01944	200	2.7	0.010	0.70
Ø 32 mm PN16	01945	120	5.8	0.010	0.96
Ø 40 mm PN16	01946	70	5.0	0.020	1.50
Ø 50 mm PN16	01947	48	5.2	0.020	1.85
Ø 63 mm PN16	01948	24	5.4	0.020	2.45
Ø 75 mm PN16	01949	32	3.9	0.020	4.40
Ø 90 mm PN16	01950	16	8.2	0.020	7.00
Ø 110 mm PN16	01951	9	9.1	0.020	16.20
Ø 125 mm PN16	01952	15	17.0	0.041	26.00
Ø 140 mm PN16	01953	10	16.7	0.041	32.80
Ø 160 mm PN10	01954	6	9.2	0.041	34.15
Ø 200 mm PN10	01955	6	9.2	0.082	41.00
Ø 225 mm PN10	01956	4	14.3	0.082	92.40
Ø 250 mm PN10	15776	4	10.9	0.082	166.00
Ø 315 mm PN10	15777	2	11.4	0.122	256.00

Sight window1



	Code	Standard Package	Standard weight kg	Standard volume m ³	Unit Price EURO
Ø 50 mm PN16	02387	12	5.1	0.020	25.00
Ø 63 mm PN16	02388	12	7.5	0.020	29.00
Ø 75 mm PN16	02389	3	7.7	0.020	78.00
Ø 90 mm PN16	02390	4	12.6	0.041	91.00
Ø 110 mm PN16	02391	2	8.6	0.041	112.00
Ø 125 mm PN16	02392	2	9.6	0.041	133.00
Ø 140 mm PN16	02393	1	6.1	0.041	164.00
Ø 160 mm PN10	02394	1	8.5	0.041	242.00
Ø 200 mm PN10	02395	1	11.3	0.082	279.00
Ø 225 mm PN10	02396	1	13.3	0.082	342.00

PVC Check Valve - Check Series



Check valve. Two-way connection, PVC-U body, EPDM seal and plastic-coated stainless steel spring. Easy installation.

Easy maintenance.
Full visibility

Model	Code	Standard Package	Standard A 1r11k kg	Standard Volume m ³	Unit Price EURO
Ø50	76782	3	2.94	0.12	40.00
Ø63	76783	2	2.68	0.12	45.00
Ø 50 spring	76740	3	2.94	0.12	44.00
Ø 63 spring	76741	2	2.68	0.12	48.00

PVC leaf check valve.Complete



	Code	Standard Package	Standard a 1r11k kg	Standard volume m ³	Unit Price EURO
Ø 75 mm PN10	23312	2	5.3	0.010	70.00
Ø 90 mm PN10	23313	3	12.5	0.010	92.50
Ø 110 mm PN10	23314	2	10.5	0.010	110.00
Ø 125 mm PN10	23315	2	11.3	0.020	121.00
Ø 140 mm PN10	23316	2	13.2	0.041	144.00
Ø 160 mm PN6	23317	1	10.7	0.041	214.00
Ø 200 mm PN6	23318	1	12.3	0.041	250.00
Ø 225 mm PN6	23319	1	14.2	0.041	335.00
Ø 250 mm PN6	37074	1	25.3	0.041	737.00
Ø 315 mm PN6	37075	1	-	-	1,066.00

PVC leaf check valve.Naked



	Code	Standard Package	Standard a 1r11k kg	Standard volume m ³	Unit Price EURO
Ø 75 mm PN10	08984	2	5.3	0.010	33.00
Ø 90 mm PN10	08985	3	1.50	0.010	37.50
Ø 110 mm PN10	08986	2	10.5	0.010	45.00
Ø 125 mm PN10	09040	2	11.3	0.020	53.50
Ø 140 mm PN10	08987	2	13.2	0.041	60.00
Ø 160 mm PN6	08988	1	10.7	0.041	68.00
Ø 200 mm PN6	09041	1	12.3	0.041	80.00
Ø 225 mm PN6	08989	1	14.2	0.041	95.00
Ø 250 mm PN6	37056	1	25.3	0.041	144.00
Ø 315 mm PN6	37057	1	-	-	268.00

PVC spring check valve

Stainless steel spring, EPDM O-rings. Vertical or horizontal installation.



	Code	Standard Package	Standard a 1r11k kg	Standard volume m ³	Unit Price EURO
Ø 20 mm	09011	24	-	0.010	10.00
Ø 25 mm	09012	12	3.1	0.010	12.25
Ø 32 mm	09013	10	3.4	0.010	14.50
Ø 40 mm	09014	6	-	0.020	18.00
Ø 50 mm	09015	12	7.80	0.020	21.00
Ø 63 mm	09016	10	11.70	0.040	28.00
Ø 75 mm	09017	4	8.5	0.040	65.00
Ø 90 mm	09018	2	7.1	0.040	90.00
Ø 110 mm (DN80)	09019	2	7.6	0.040	108.00

PVC ball water valves

HDPE (polyethylene) hub housing. EPDM O-rings. "Anti-block" system.



	Code	Standard Package	Standard weight kg	Standard volume m ³	Unit Price EURO
Ø 20 mm PN16	36501	24	3.5	0.0204	10.00
Ø 25 mm PN16	36502	10	2.6	0.0204	11.15
Ø 32 mm PN16	36503	8	2.9	0.0204	14.20
Ø 40 mm PN16	36504	6	3.1	0.0204	15.55
Ø 50 mm PN10	36505	10	7.40	0.0204	21.55
Ø 63 mm PN10	36506	10	12.70	0.0408	31.00
Ø 75 mm PN10	36507	4	9.2	0.0408	82.00
Ø 90 mm PN10	36508	2	7.2	0.0408	111.00
Ø 110 mm PN10	36509	1	8.2	0.0408	247.00

PVC ball water valves (2015)

HDPE (polyethylene) hub housing. EPDM O-rings. "Anti-block" system.



	Code	Standard Package	Standard weight kg	Standard volume m ³	Unit Price EURO
Ø 20 mm PN16	02453	24	3.5	0.0204	10.00
Ø 25 mm PN16	02454	10	2.6	0.0204	11.15
Ø 32 mm PN16	02455	8	2.9	0.0204	14.20
Ø 40 mm PN16	02456	6	3.1	0.0204	15.55
Ø 50 mm PN10	02502	10	7.40	0.0204	21.55
Ø 63 mm PN10	02503	10	12.70	0.0408	31.00
Ø 75 mm PN10	02459	4	9.2	0.0408	82.00
Ø 90 mm PN10	02460	2	7.2	0.0408	111.00
Ø 110 mm PN10	02461	1	8.2	0.0408	247.00

PVC ball acid valves

Teflon hub housing. EPDM O-rings. "Anti-block" system.



	Code	Standard Package	Standard weight kg	Standard volume m ³	Unit Price EURO
Ø 20 mm PN16	37039	24	3.6	0.0204	13.80
Ø 25 mm PN16	37040	10	2.6	0.0204	16.80
Ø 32 mm PN16	37041	8	2.9	0.0204	21.50
Ø 40 mm PN16	37042	6	3.1	0.0204	29.00
Ø 50 mm PN10	37043	10	7.40	0.0204	37.50
Ø 63 mm PN10	37044	10	12.70	0.0408	49.00
Ø 75 mm PN10	37045	4	9.9	0.0408	130.00
Ø 90 mm PN10	41867	2	8.3	0.0408	152.00
Ø 110 mm PN10	41868	1	8.9	0.0408	364.00



PVC butterfly valves

HDPE (polyethylene) hub housing. EPDM O-rings. "Anti-block" system.

	Code Standard	Standard a 1r1k	Standard volume	Unit Price	
	Package	kg	m ³	EURO	
Ø 75 mm PN10	32614	2	3.9	0.017	87.00
	09120		5.1	0.02	40.00
Ø 90 mm PN10	32615	2	5.2	0.017	96.00
	09121		7.8	0.02	57.00
Ø 110 mm PN10	32616	2	7.2	0.021	108.00
	09122		9.5	0.04	65.00
Ø 125 mm PN10	32617	2	9.7	0.034	139.00
	09123		10.3	0.04	79.00
Ø 140 mm PN6	32617	2	9.7	0.021	139.00
	09124		15.6	0.04	93.00
Ø 160 mm PN6	32618	2	11.4	0.034	165.00
	09125		17.5	0.04	137.00
Ø 200 mm PN6	32619	2	19.2	0.068	264.00
	09126		20.9	0.08	164.00
Ø 225 mm PN6	32619	2	19.2	0.068	264.00
	09127		23.0	0.08	210.00
Ø 250 mm PN6	15846	2	-	-	700.00
	16060		-	-	452.00
Ø 280 mm PN6 bare Ø	34472	1	20.3	0.122	1,555.00
315 mm PN6 bare	32738	1	26.5	0.163	1,985.00



PVC electric actuator

Butterfly Valves

It operates with T230V 50 Hz.

The EPOK gasket is made of PTFE.

- Security blocking system

- 4-20 mA signal setting 1

	Code	Standard	Standard a 1r1k	Standard volume	Unit Price
		Package	kg	m ³	EURO
Ø 75 mm PN16	30272	-	-	-	1000.00
Ø 90 mm PN16	30273	-	-	-	1,020.00
Ø 110 mm PN16	30274	-	-	-	1,275.00
Ø 125 mm PN16	30275	-	-	-	1,730.00
Ø 140 mm PN10	30276	-	-	-	1,785.00
Ø 160 mm PN10	30277	-	-	-	2,258.00
Ø 200 mm PN10	30278	-	-	-	2,426.00
Ø 225 mm PN10	32742	-	-	-	3,000.00

PVC ball valves with electric actuators



It operates with T230V 50 Hz.

The EPOK gasket is made of PTFE.

- Security blocking system
- 4-20 mA signal setting

	Code	Standard Package	Standard weight kg	Standard volume m ³	Unit Price EURO
Ø 20 mm PN16	31421	-	-	-	485.00
Ø 25 mm PN16	31422	-	-	-	495.00
Ø 32 mm PN16	31423	-	-	-	500.00
Ø 40 mm PN16	31424	-	-	-	510.00
Ø 50 mm PN10	02628	-	-	-	670.00
Ø 63 mm PN10	02629	-	-	-	720.00
Ø 75 mm PN10	02630	-	-	-	1,065.00
Ø 90 mm PN10	02631	-	-	-	1,315.00
Ø 110 mm PN10	26415	-	-	-	1,995.00

Soft PVC hose

It offers great convenience in underground installations and transportation. Made of PVC, grey in color, test pressure 5 kg/cm². (Prices are per meter.)



	Code	Standard Package	Standard weight kg	Standard volume m ³	Unit Price EURO
Ø 20 mm	28570	50 m	9.1	0.060	2.60
Ø 25 mm	28571	50 m	11.0	0.042	4.10
Ø 32 mm	28572	50 m	16.7	0.065	6.00
Ø 40 mm	28573	50 m	23.0	0.109	7.60
Ø 50 mm	28574	50 m	37.0	0.178	8.70
Ø 63 mm	28575	25 m	49.5	1.140	12.70
Ø 75 mm	34588	25 m	33.3	0.300	17.40

PVC CONSTRUCTION PIPE AND PIPES

PVC adhesive



	Code	Standard Package	Standard A 1r1k(Kg)	Standard Volume m3	Unit Price EURO
1000 ml.	02426	12	12.47	0.45 x 0.33	32.00

PVC adhesive



For large diameter pressure pipes. The slow setting time ensures correct positioning and perfect connection of the fittings.

	Code	Standard Package	Standard A 1r1k(Kg)	Standard Volume m3	Unit Price EURO
1000 ml with a brush	68522	12	12.47	0.45 x 0.33	32.00



PVC-U pipe PN10

Model	SKU References1	Length (m)	A 1r1k (Kg)	Volume (mxm)	Unit Price EURO
Ø40 mm	02708	5	1.8	0.04x5	4.30
Ø50 mm	02709	5	2.76	0.05x5	6.74
Ø63 mm	02710	5	0.01	0x0.01	7.50
Ø75 mm	02711	6	6	0.075x6	10.40
Ø90 mm	02712	6	11	0.09x6	25.34
Ø110 mm	02713	6	13	0.11x6	30.71
Ø125 mm	02714	6	16	0.125x6	39.53
Ø140 mm	02715	6	21	0.14x6	49.84
Ø160 mm	02716	6	27	0.16x6	65.33
Ø180 mm	02717	6	33	0.18x6	81.77
Ø200 mm	02718	6	42	0.2x6	100.87
Ø250 mm	02719	6	65	0.25x6	157.01
Ø315 mm	02720	6	102	0.315x6	286.44



Gaskets

	Code	Standard Package	Standard a 1r1k kg	Standard volume m ³	Unit Price EURO
Ø 75 mm	02063	100	1.8	0.010	5.00
Ø 90 mm	02064	80	1.9	0.010	5.50
Ø 110 mm	02065	60	2.3	0.010	6.50
Ø 125 mm	02066	70	1.5	0.010	8.00
Ø 140 mm	02067	60	3.5	0.020	9.00
Ø 160 mm	02068	40	3.0	0.020	10.00
Ø 200 mm	02069	30	2.9	0.020	11.00
Ø 225 mm	02070	30	3.6	0.020	16.00
Ø 250 mm	02071	10	2.1	0.020	24.00
Ø 315 mm	02072	6	1.4	0.020	34.00

Bolt + nut + washer set

(1 piece)



	Code	Standard Package	Standard a 1r1k kg	Standard volume m ³	Unit Price EURO
M16 x 120mm	02440	32	8.7	0.010	6.90
M16 x 130mm	02441	32	9.0	0.010	7.25
M16 x 140mm	02442	32	9.6	0.010	7.50
M16 x 150mm	02443	32	10.0	0.010	7.80
M16 x 160mm	02444	24	7.9	0.010	8.00
M16 x 170mm	02445	24	8.4	0.010	8.50
M20 x 160mm	02448	16	8.6	0.010	11.75
M20 x 180mm	02449	16	9.3	0.010	13.50
M20 x 200mm	20263	16	10.0	0.010	13.50
M20 x 210mm	02451	16	10.4	0.010	14.25
M20 x 230mm	02452	16	12.2	0.010	15.00
M20 x 270mm	07721	16	12.7	0.010	22.00
M20 x 310mm	07722	4	3.5	0.010	26.00

